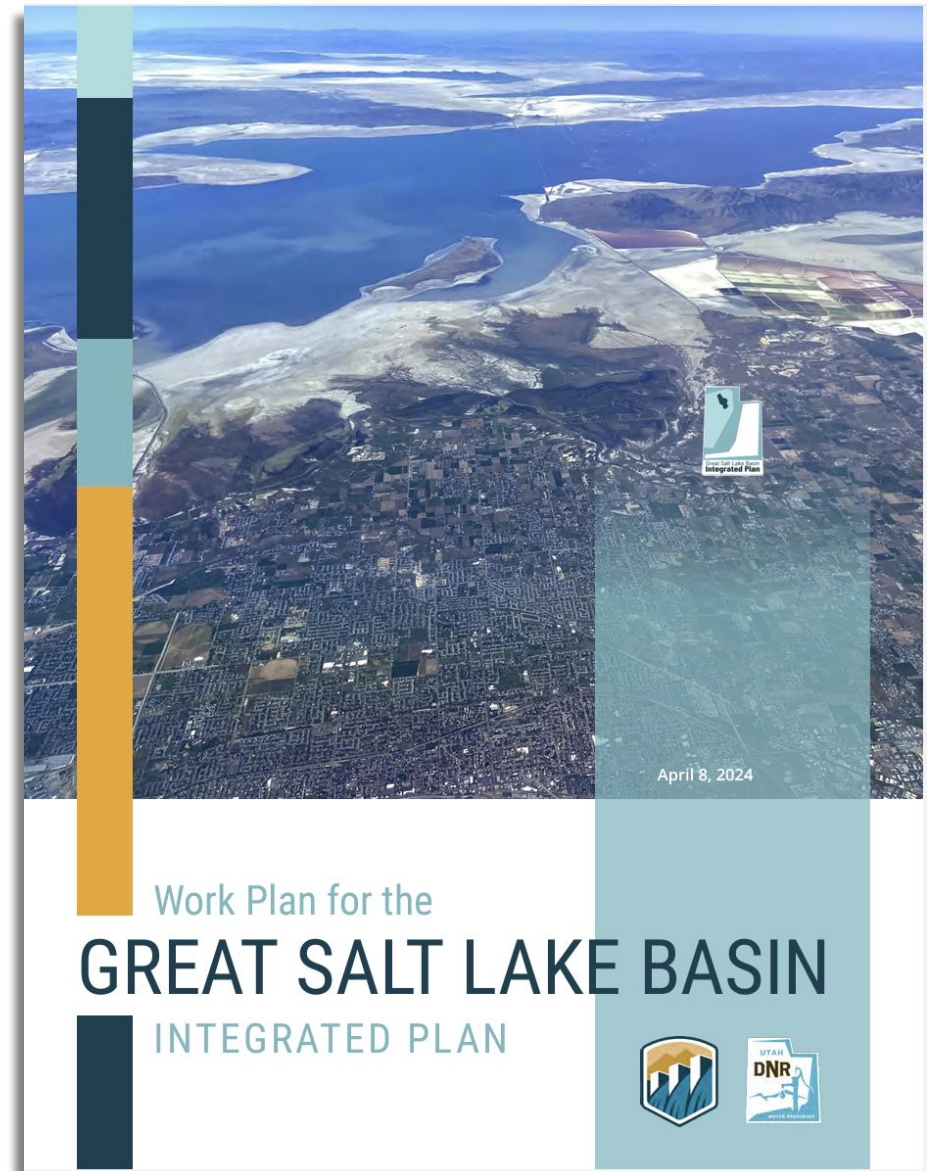
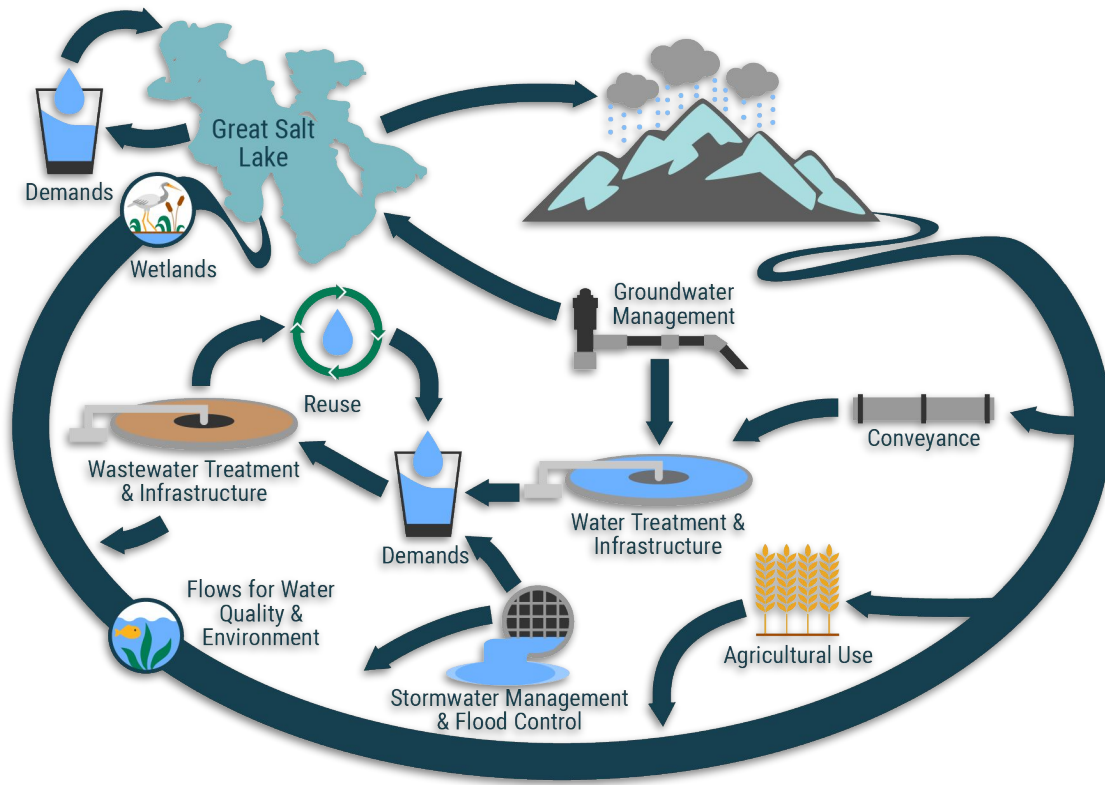
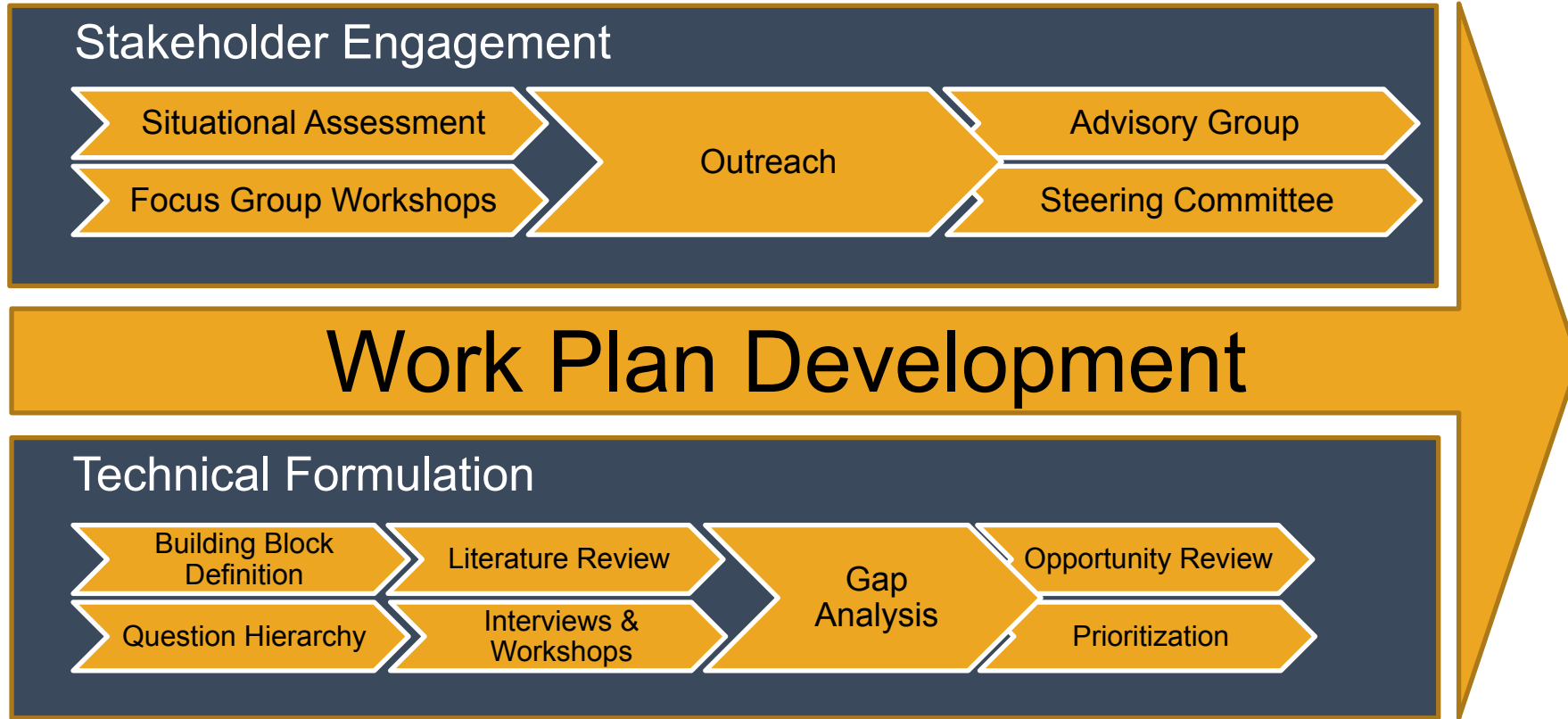


# Great Salt Lake Basin Integrated Plan

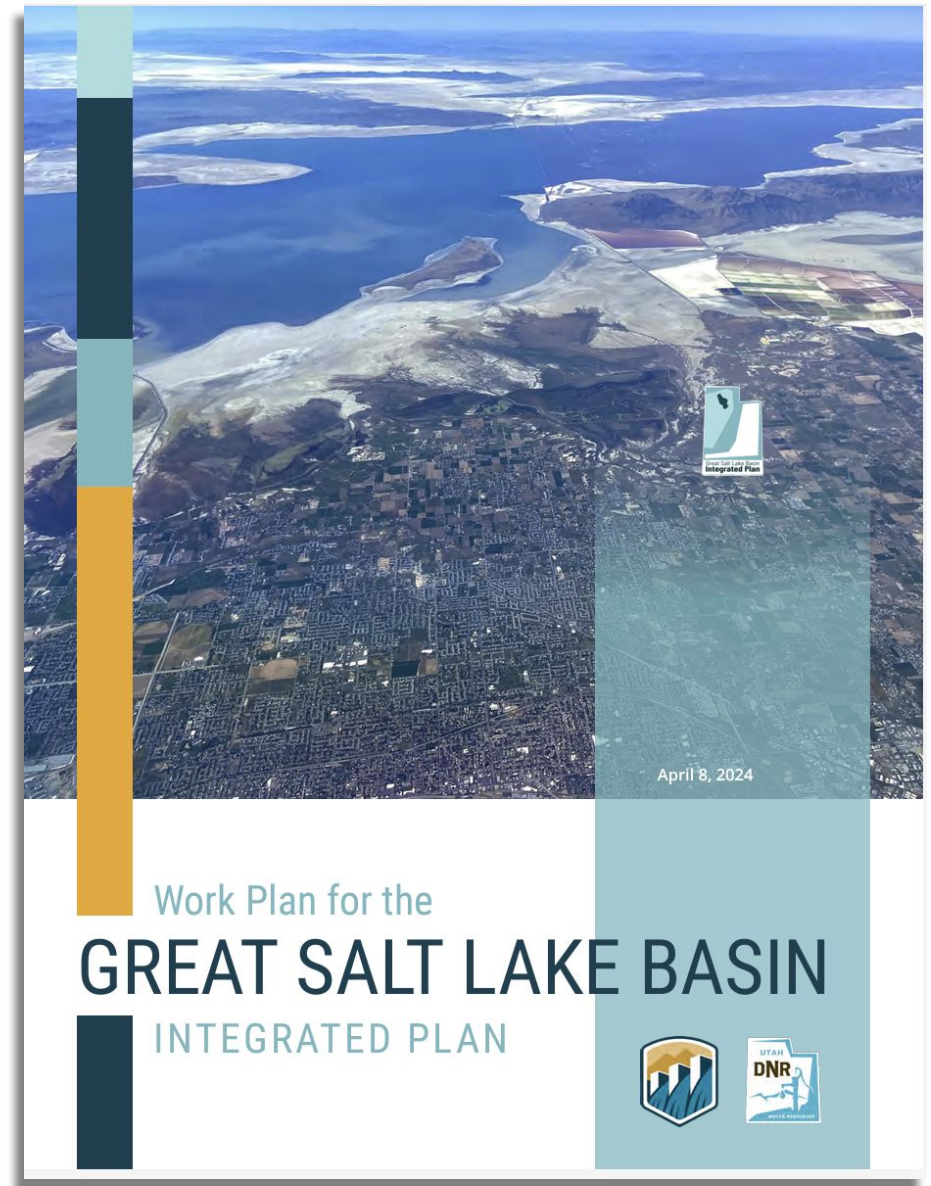


# Work Plan Development



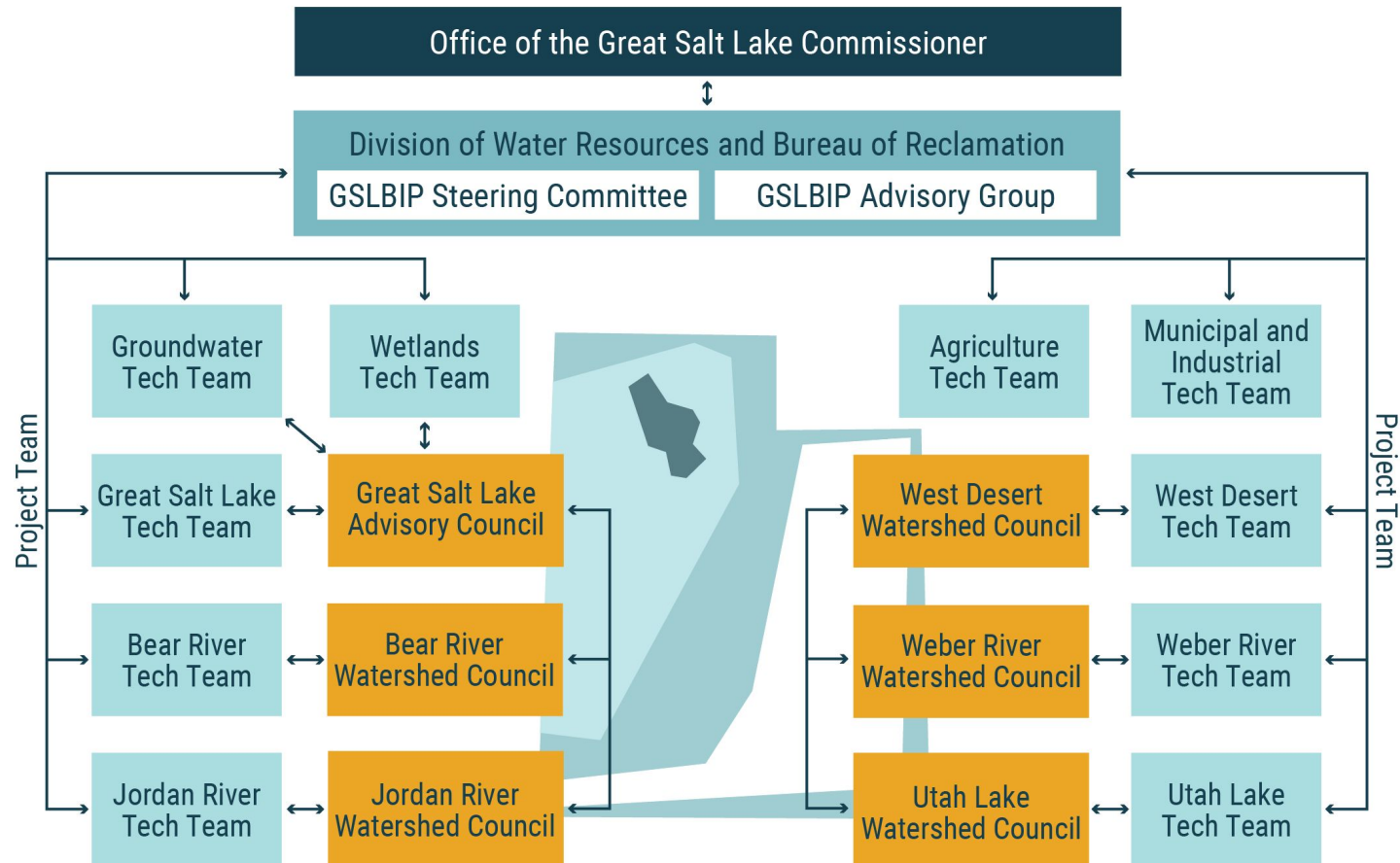
# What's happening now?

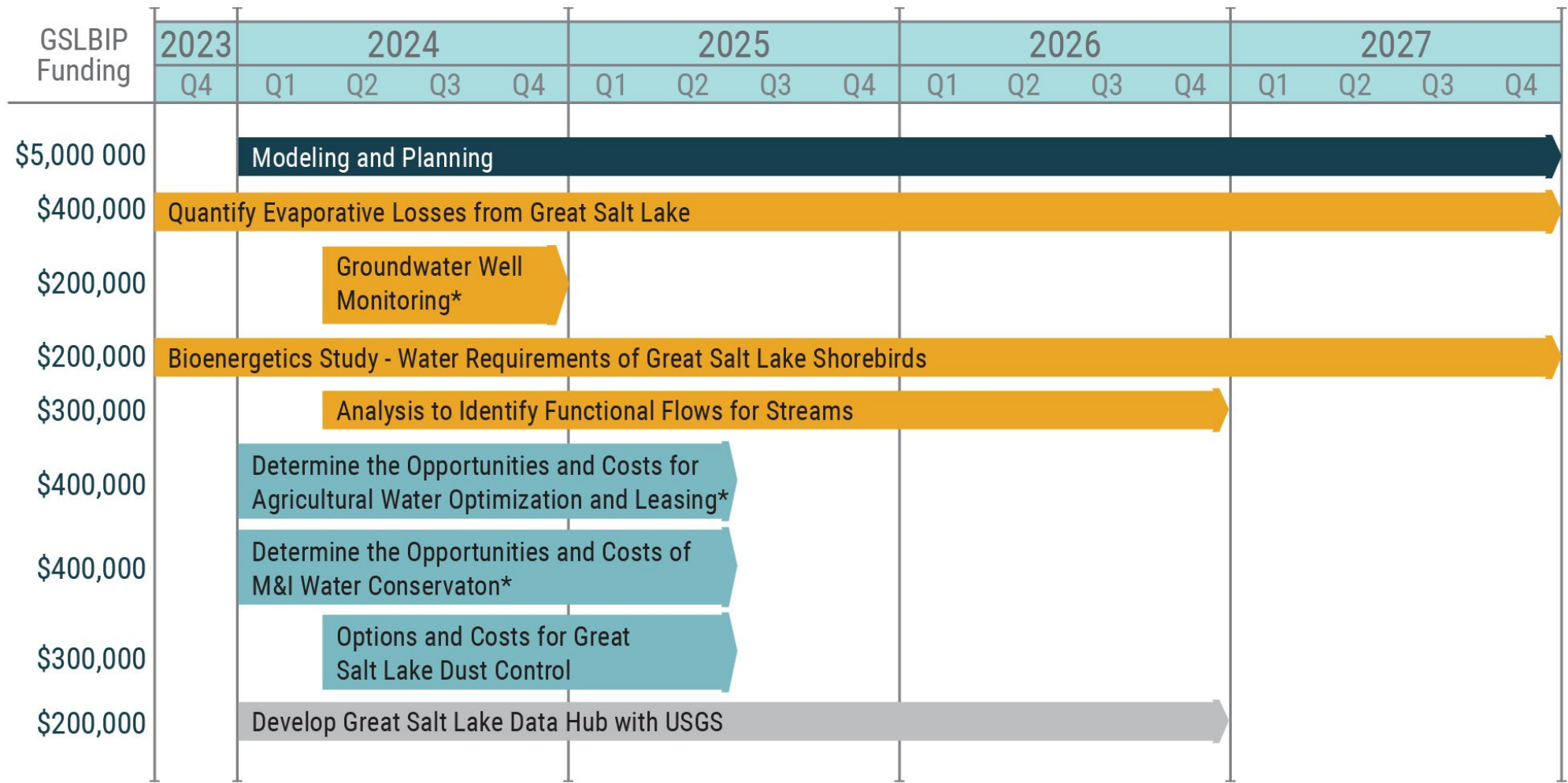
- The recently-completed Work Plan provides a road map for the completion of the Great Salt Lake Basin Integrated Plan.
- Working on a “mega model”
- Evaluating alternatives
- Developing trade-off analyses
- Database management
- Completing 8 separate projects recommended in the gap analysis





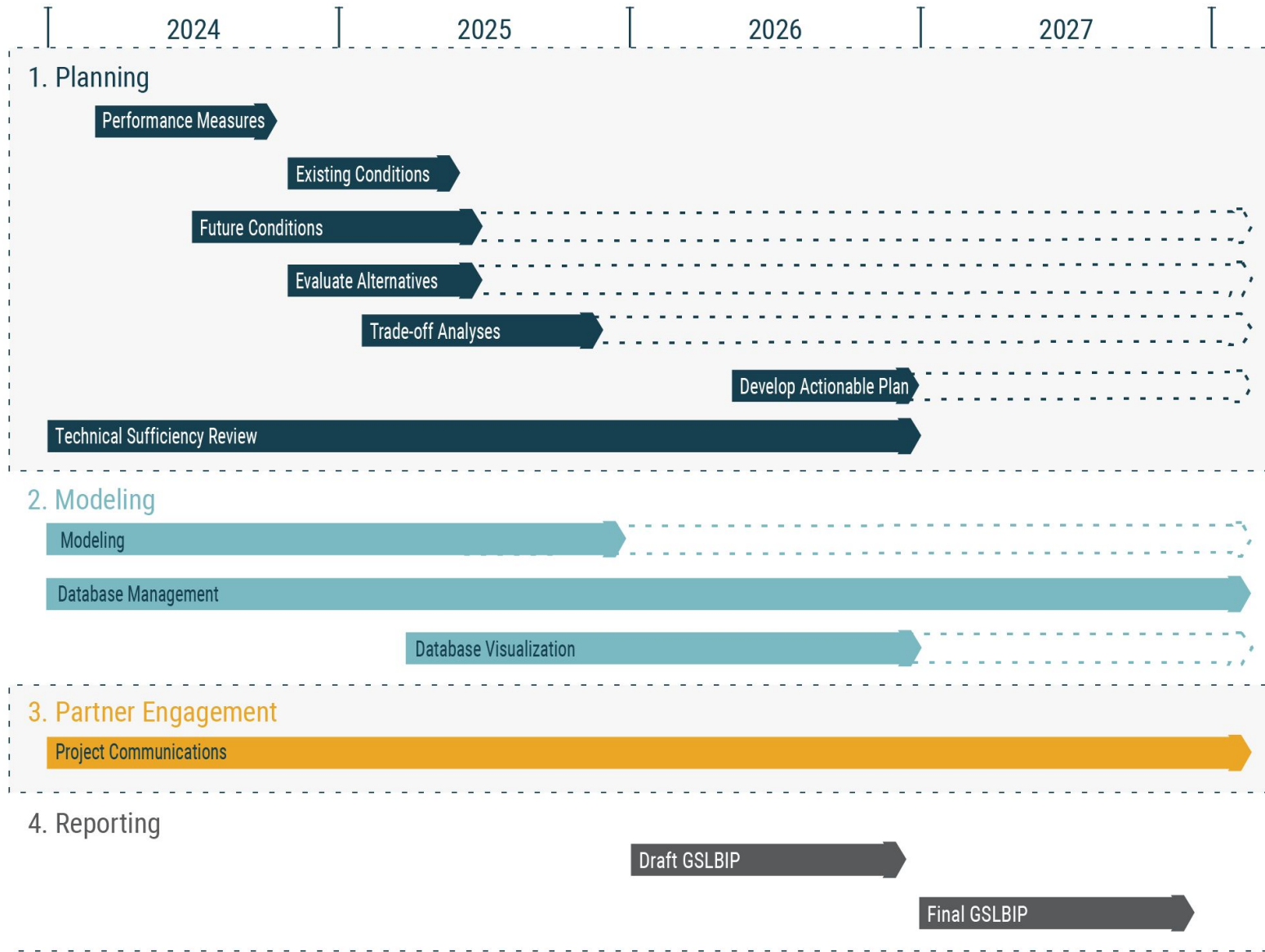
# An Integrated Collaborative Approach





\*Projects that were changed because of draft Work Plan comments.









# Thank you.

**Utah Division of Water Resources**  
[water.utah.gov](http://water.utah.gov)

1594 W North Temple  
Suite 310  
Salt Lake City, UT 84114-6201  
(801) 538-7230

