

An aerial photograph of a school campus featuring a large brick building with a curved glass facade, a football field, and surrounding residential areas. A semi-transparent digital twin model of the main building is overlaid on the scene. The background shows a blue sky with scattered clouds and a body of water in the distance. The image is framed by abstract blue geometric shapes on the left and right sides.

# DIGITAL TWIN IMAGING

**WE SAVE MINUTES WHEN  
SECONDS COUNT**

[www.dtisim.com](http://www.dtisim.com)

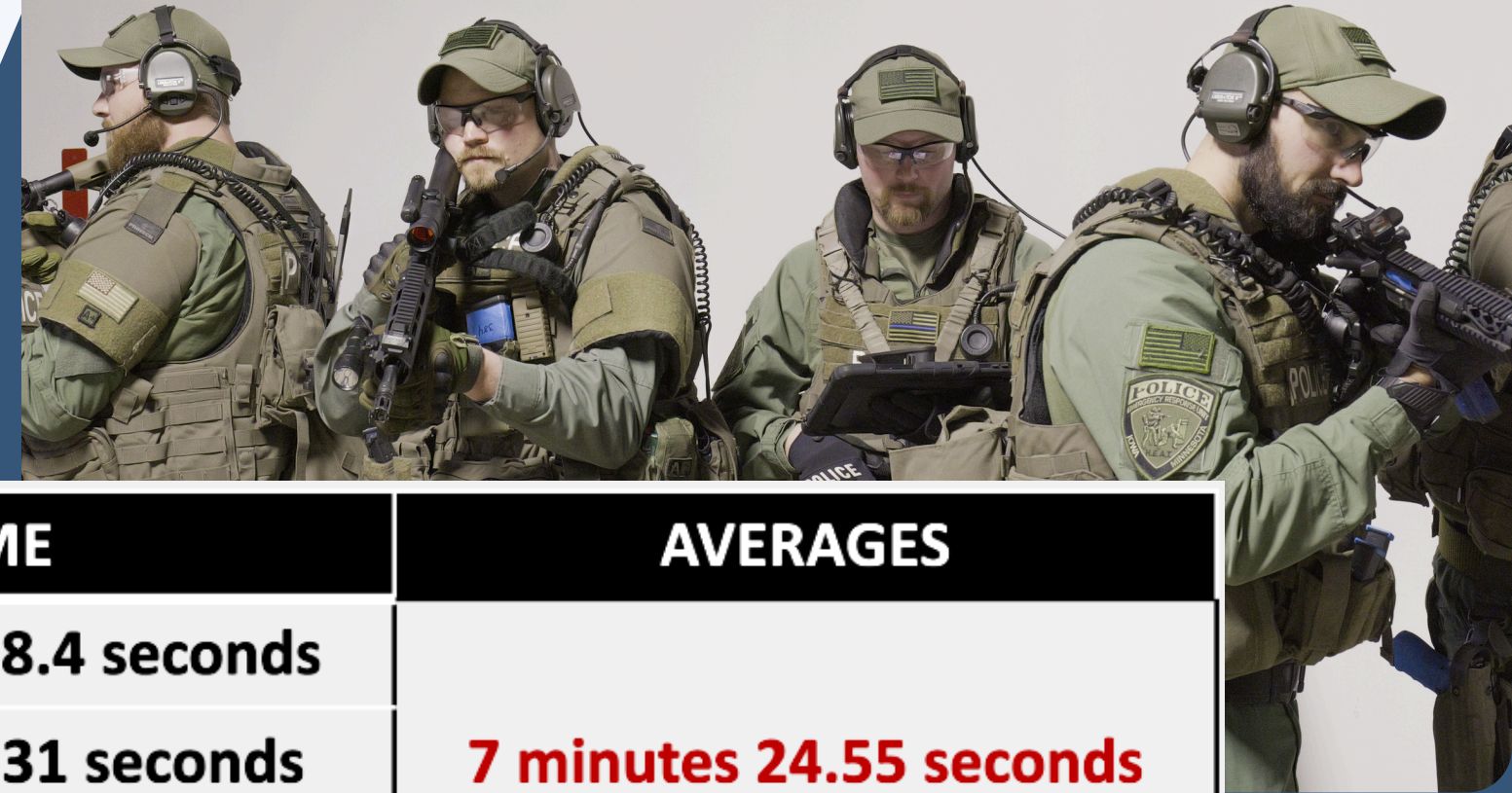
# What we do & how we do it

---

DTI provides digital intelligence and situational awareness for first responders during training, response and resolution scenarios through the use of our 4D models.



# SWAT Trial - 90% Reduction



TEAMS	INFORMATION	TIME	AVERAGES
1	Shooter in Unknown Room	10 minutes 28.4 seconds	<b>7 minutes 24.55 seconds</b>
2	Shooter in Unknown Room	4 minutes 0.31 seconds	
3	Shooter in Unknown Room	7 minutes 49.51 seconds	
4	Room # and Hall Letter	1 minute 2.95 seconds	56.88 seconds
5	Room # and Hall Letter	55.27 seconds	
6	Room # and Hall Letter	53.43 seconds	
7	Room #/Hall Letter with 4D Imaging	31.91 seconds	<b>29.81 seconds</b>
8	Room #/Hall Letter with 4D Imaging	30.81 seconds	
9	Room #/Hall Letter with 4D Imaging	26.76 seconds	



# Delighted Clients

Currently DTI is working with more than 30 clients in and around the midwest, primarily in South Dakota and Iowa.

**5**

School  
Districts

**34**

Unique  
Schools





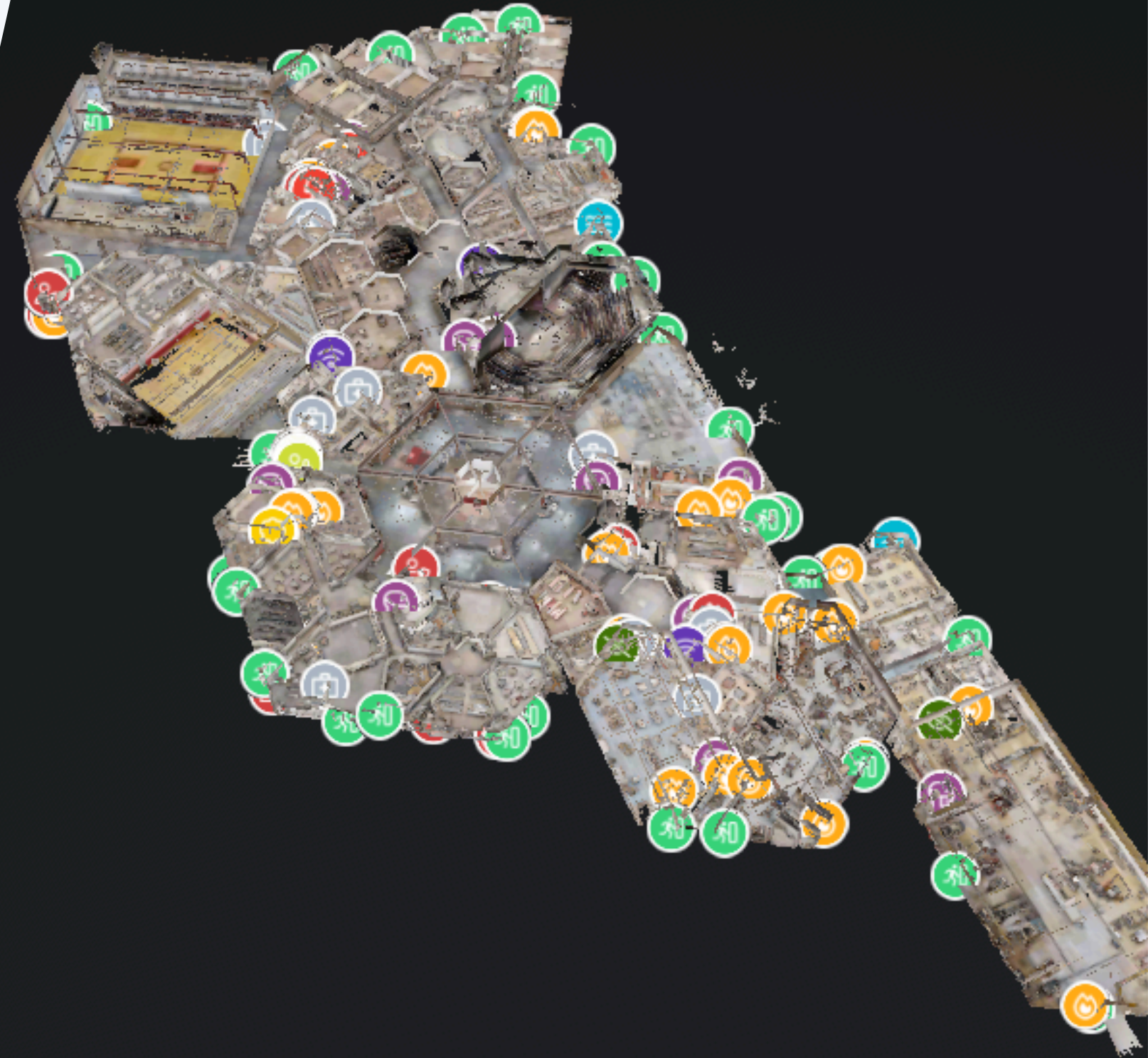
# Contact Us

---

 605-496-1995

 [elliott.barnes@dtisim.com](mailto:elliott.barnes@dtisim.com)

 [www.dtisim.com](http://www.dtisim.com)





# DIGITAL TWIN IMAGING

**WE SAVE MINUTES WHEN  
SECONDS COUNT**

[www.dtisim.com](http://www.dtisim.com)