

Utah School-Based Health & Well-being Programs

Presentation to the Education & Mental
Health Coordinating Council



**Aaron Fischer,
PhD, BCBA-D**

**Utah School Mental
Health Collaborative**



**Karen Manotas,
MD**

**Huntsman Mental
Health Institute**



**Shelly Cooper,
RN, MPH**

**Intermountain
Health**



**Tanya Albornoz,
CSW**

**Utah State Board of
Education**



Project Updates & Best Practices

Utah School Mental Health Collaborative

Multi-tiered Mental Health Model in Schools



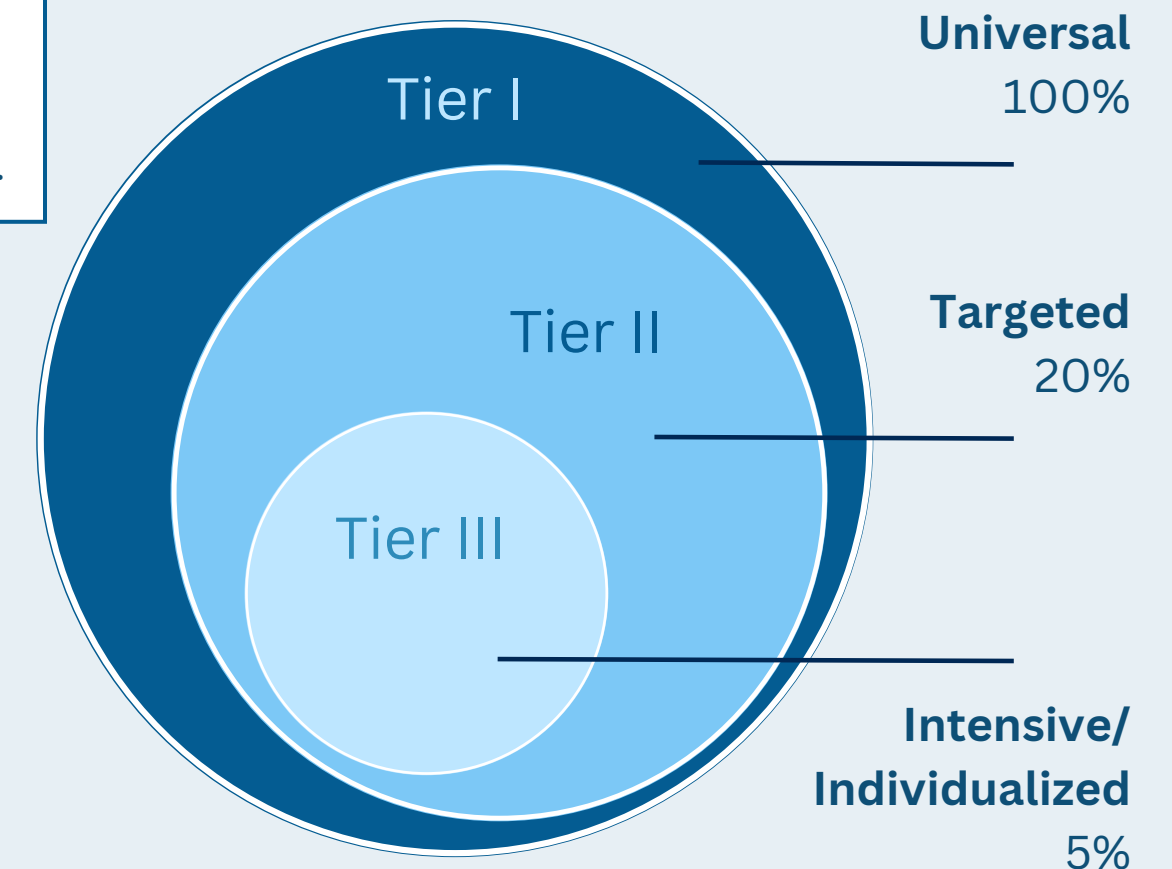
Community, State, & Local Mental Health Partners



Tier 1 strategies should be implemented for all students consistently **prior** to strategies for Tiers 2 or 3.

Tier 2 and 3 supports are provided in addition to - **not instead of** - Tier 1 instruction

Systems of Support



School-Based Telehealth Program



WCSD 2023-2024 End of School Year Data:

26,870



Health Room Visits

5,310



Visits Used
Standing Orders

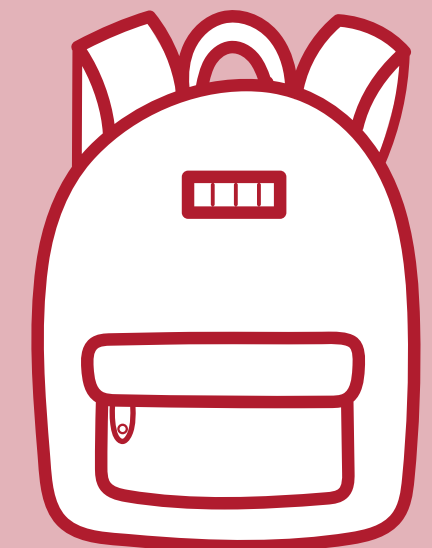
130



Telehealth Visits

Increase of 326% from
previous year

96%



Students Remain
in School

90% of parents who were offered the program opted-in & 50% of parents join the call virtually

SBTH Attendance Impact



5,500 days



of education saved in **2023-24**

Employees may participate in the SBTH program

Saves missed days of work and decreased need for substitute teachers

Students stay in the classroom and receive the education needed.

Aides in reducing teacher stress from playing “catch-up” for students who are missing classroom time.

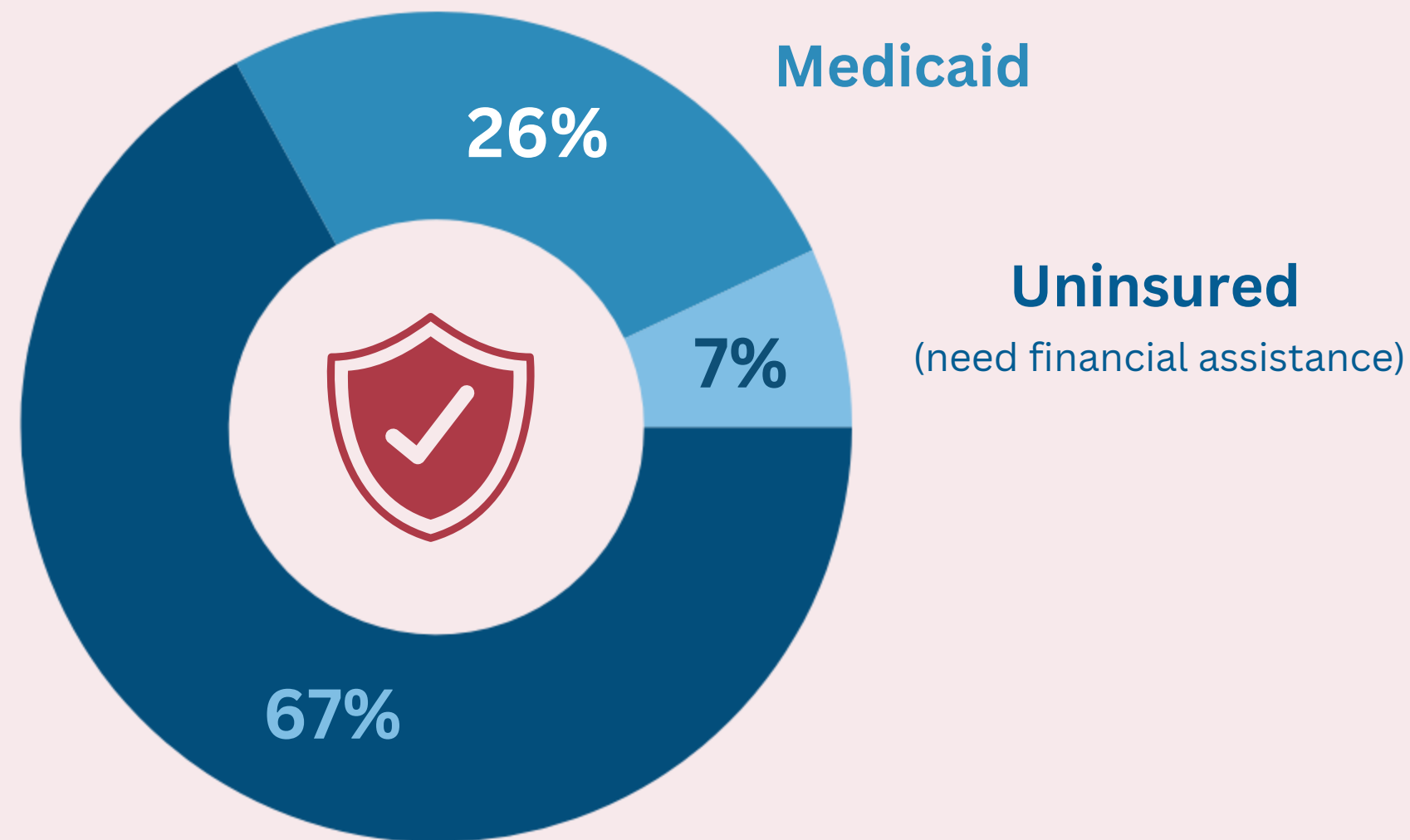
Chronic absenteeism is linked to a 4-7x increase in high school dropout rates



School-Based Telehealth Program



Insurance



Commercial

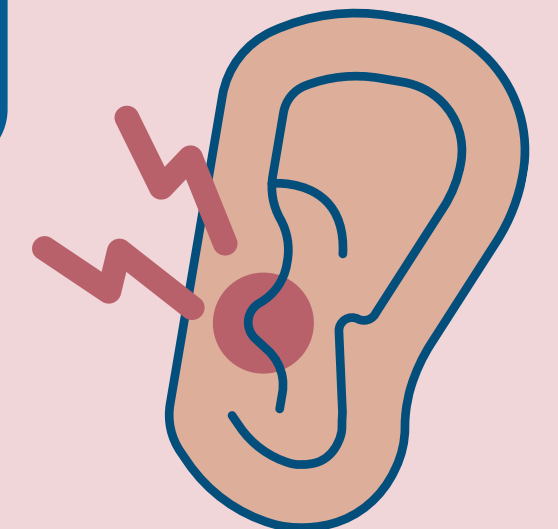
Majority calls from Title 1 or High School

Pediatric Health Conditions

Connect Care Acute Virtual Care can see 16 of the top pediatric conditions seen in ED for \$69 while student in school.

**Average cost of ED visit \$350-\$1000+
Pediatrician visit \$180+**

**Verbal Consent every TH call
Written Consent annually**



Expansion SY 2024-25



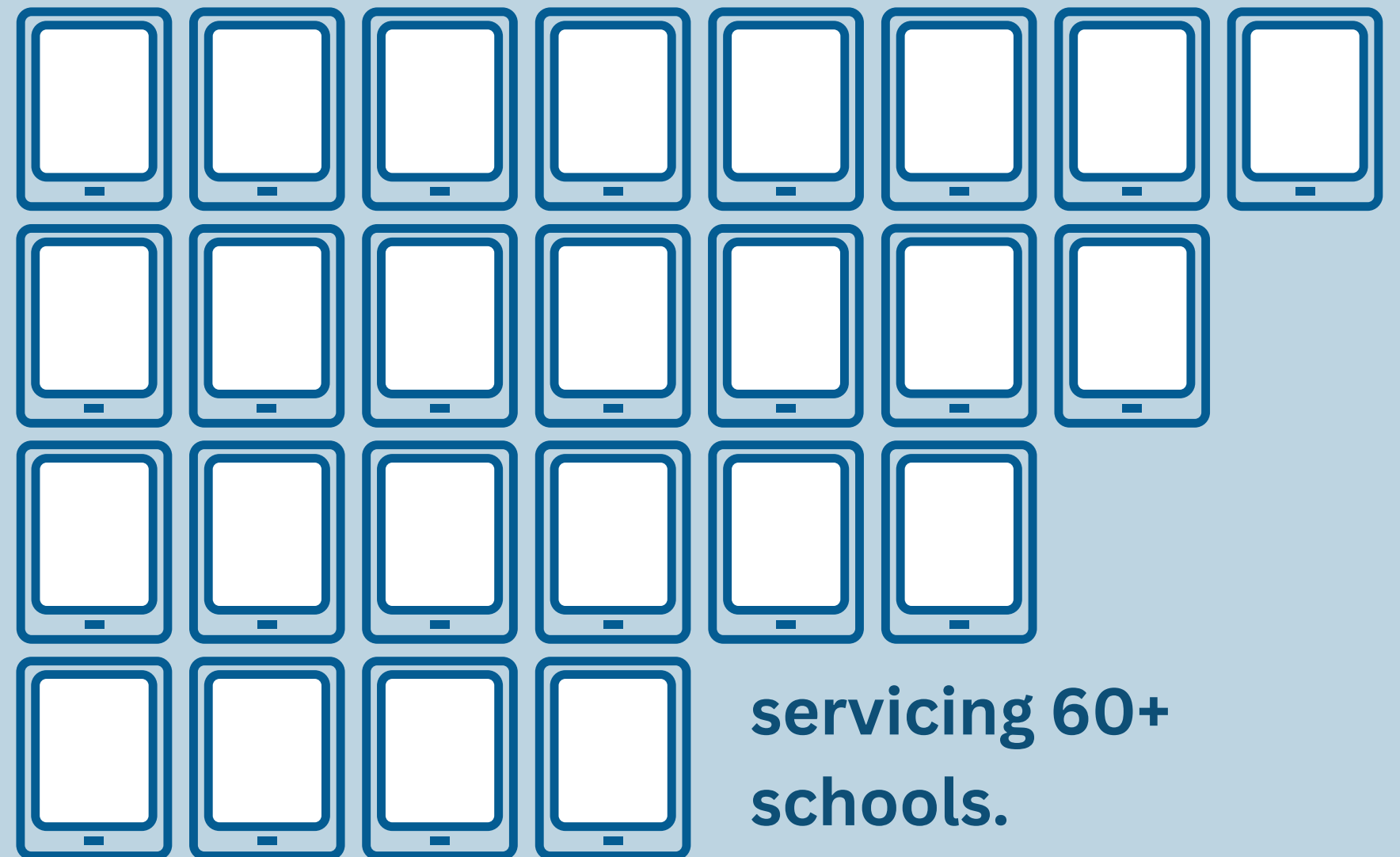
IH is **collaborating** with **UETN** to bring TH into all **urban & rural schools** who would like to **participate**.

Five new school districts

- Canyons
- Weber
- Garfield County
- Iron County
 - (delayed start)
- Washington County
 - (delayed start)

Expand TH services to include mental health through partnerships & expanded services

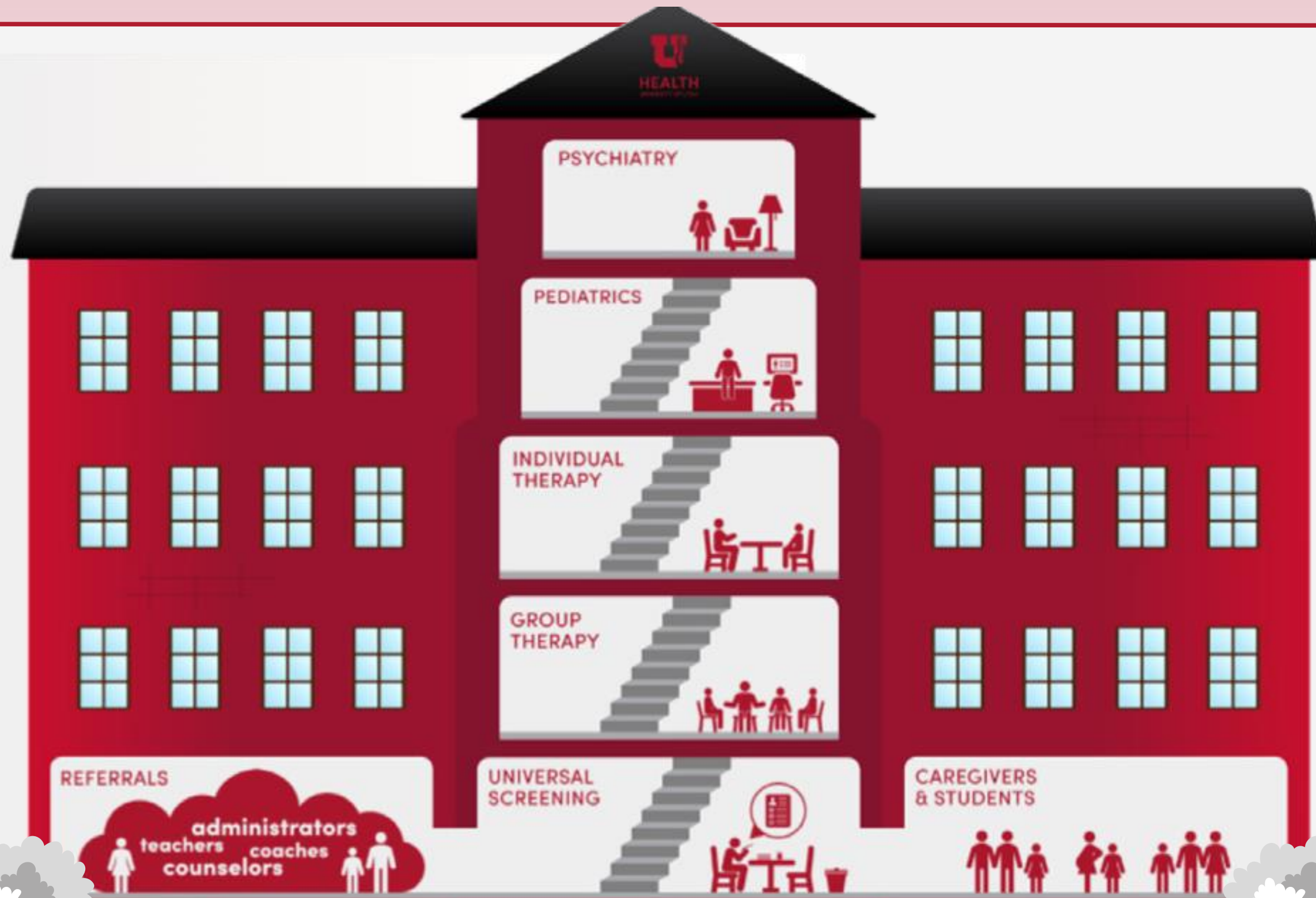
Total of 27 IH devices will be in use, plus 20 UETN devices



servicing 60+ schools.

Anticipate a 300%-400% increase in TH calls for 2024-25 SY

Integrated School-Based Health Supports



Partners in School-Based Continuum of Care

Call Up and SafeUT



CALL-UP
CONSULTATION ACCESS LINK
LINE TO UTAH PSYCHIATRY

SAFE

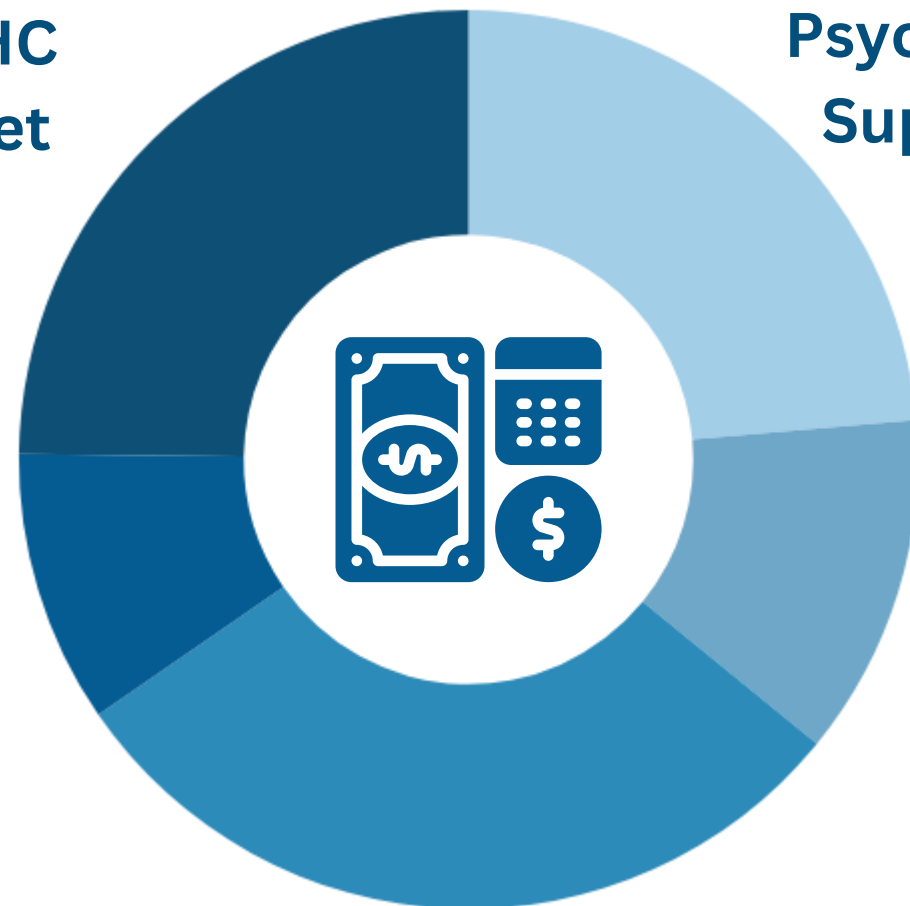


Utah School Mental Health Collaborative



USMHC Statewide Budget Summary

USMHC Budget



Psychiatry Support

Case Management Support

Therapeutic Support

Administrative Costs

Total Combined Budget: \$7,077,200



Student Groups

675,000
Students

1,000

= 675

**Total Savings for
675,000 Students:
\$20,250,000 Annually**



33,750
Students

x \$400 =

\$13,500,000
Total Savings

Utah's Behavioral Health System-Level Issues

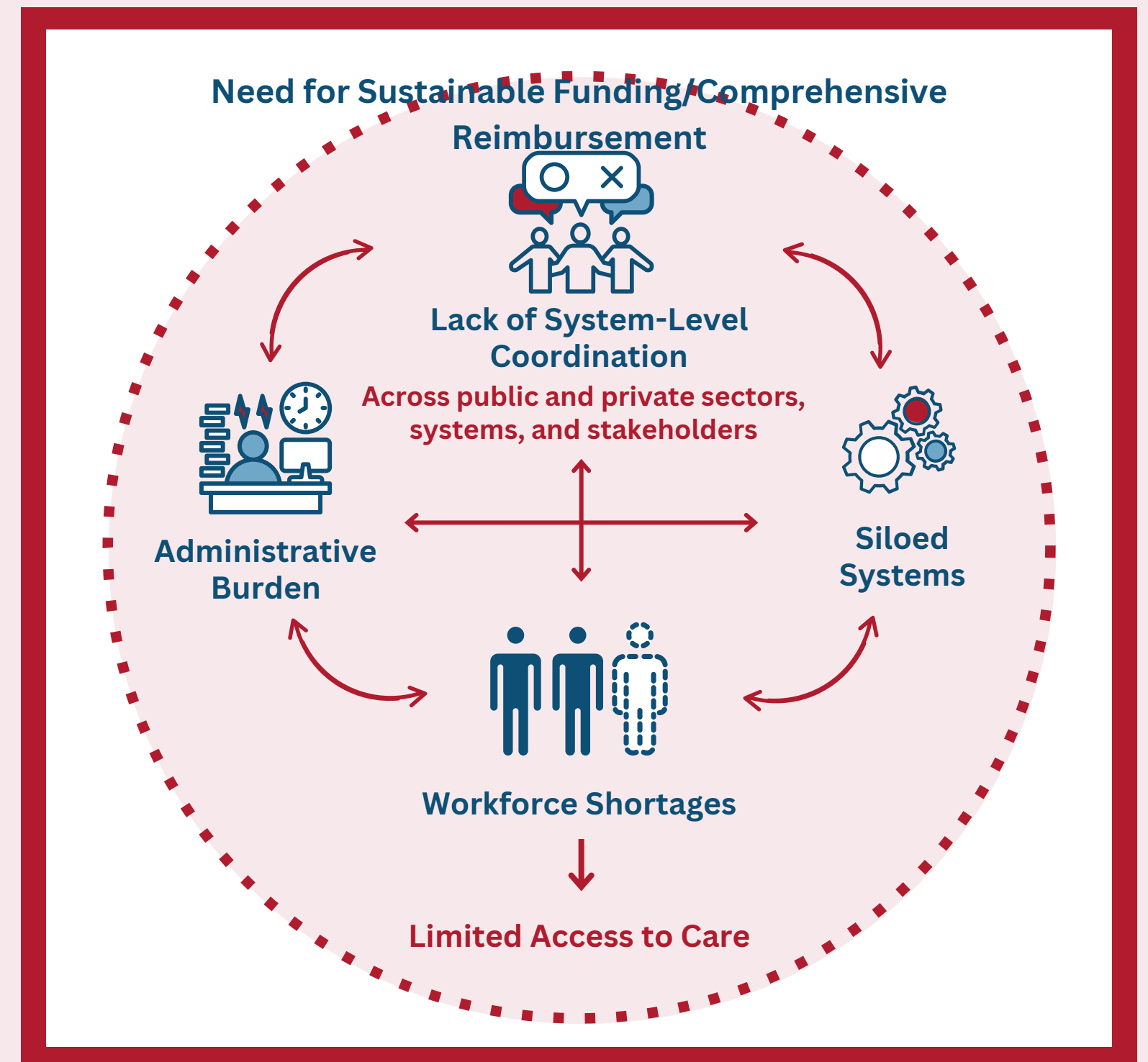
Low funding levels

Siloed approaches

Delayed treatment outcomes

Increased administrative burden

Exacerbated workforce shortages



Connection to Behavioral Health Master Plan



Integrate physical & behavioral health



Improve patient, family, & consumer navigation

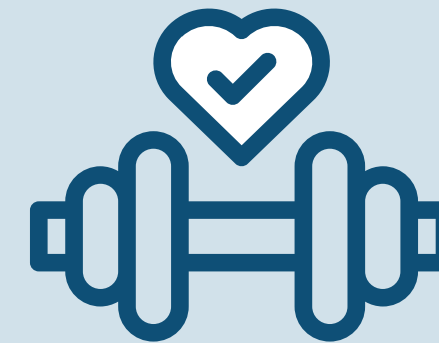
Continue to build out Utah's behavioral health crisis & stabilization systems.



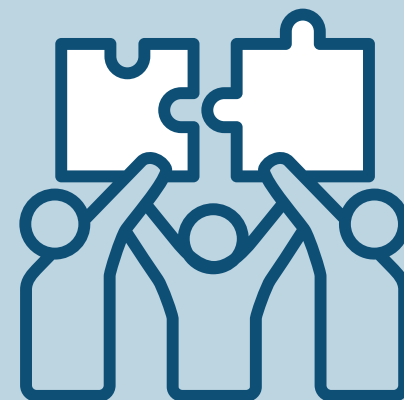
Improve the availability of services & supports for individuals with serious mental illness (SMI) & complex behavioral health needs & their families.



Strengthen behavioral health prevention & early intervention.



Expand, support, & diversify Utah's behavioral health workforce.



Support continued use, implementation, creation, & innovation of evidence-based interventions.



Recommendations

SBTH Future Needs

Funding Needs

New Equipment

In-Person Health Aides

In-Person or Virtual School Nurses

Annual Service Fee for Each Device



Recommendations

School Based Mental Health Programs

Streamline

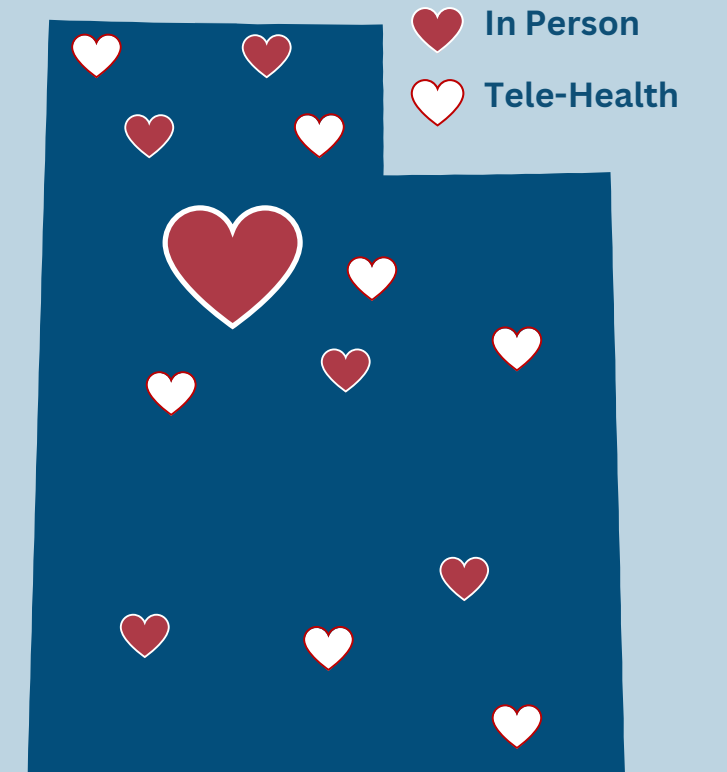


consent process

More brick and mortar clinics
for high density communities



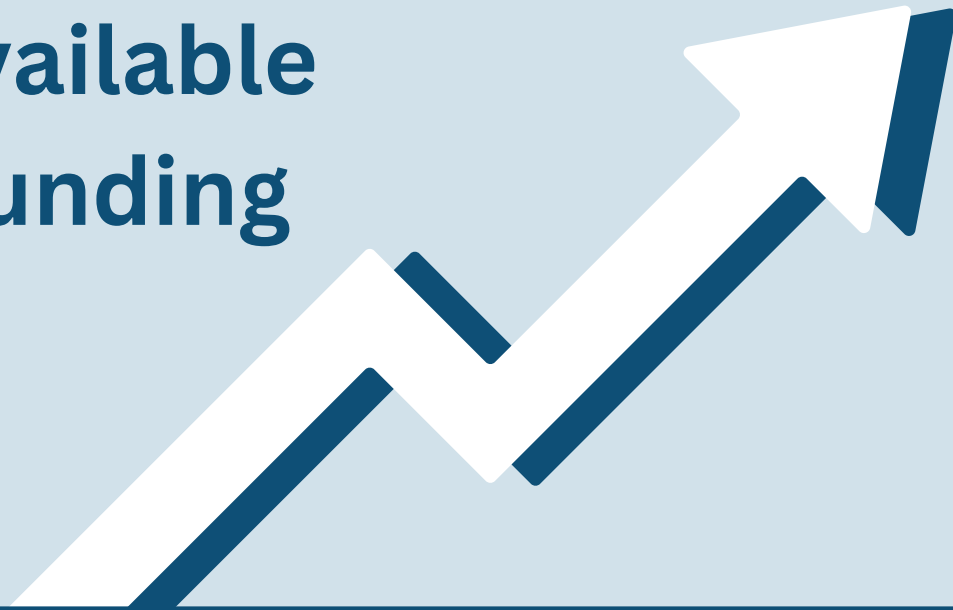
Telehealth Supports



Serving all Utah
communities

Student Mental Health Amendment Recommendations

Available
Funding



Implementation Plan

Braiding
Services



Point of Care
Testing



Overall Health



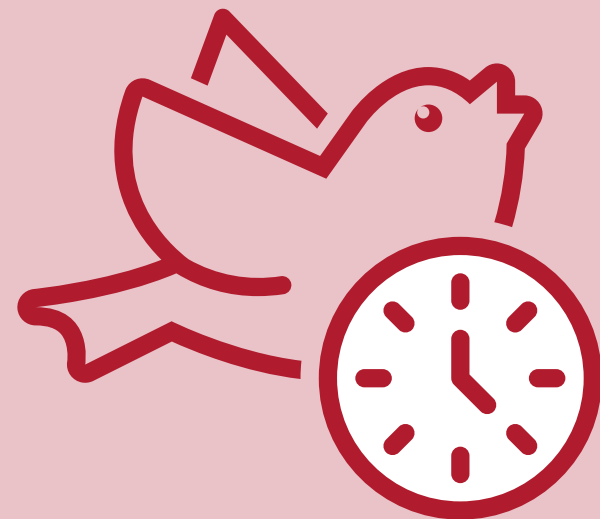
School Based Mental Health and Student Survey Bill Recommendations

HB 373, HB 413, and HB 182

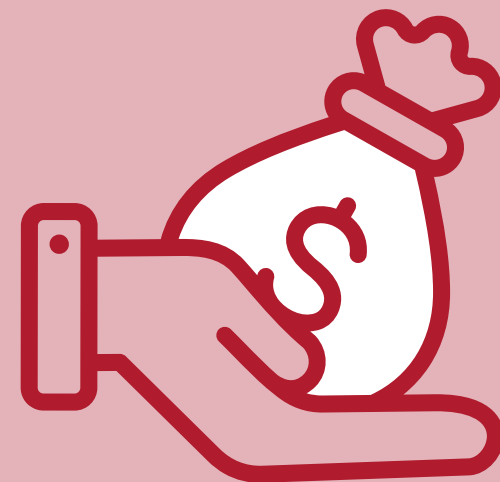
Qualifying Personnel



District Declaration Timelines



Funding Model



Grant Period

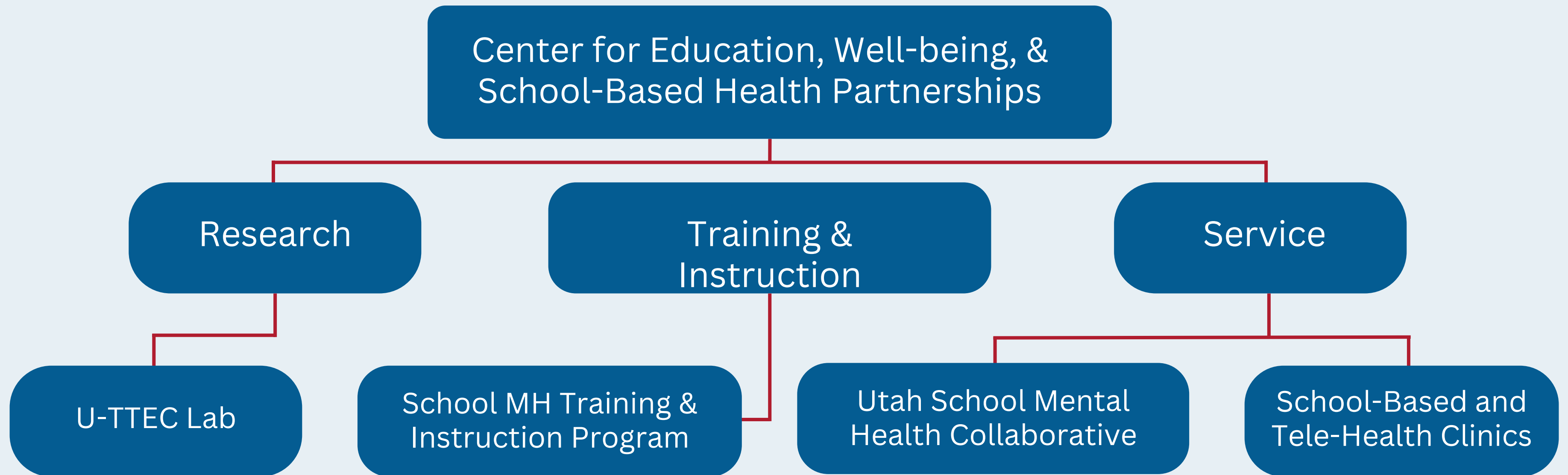


Consent Conditions



Partnership Coordination

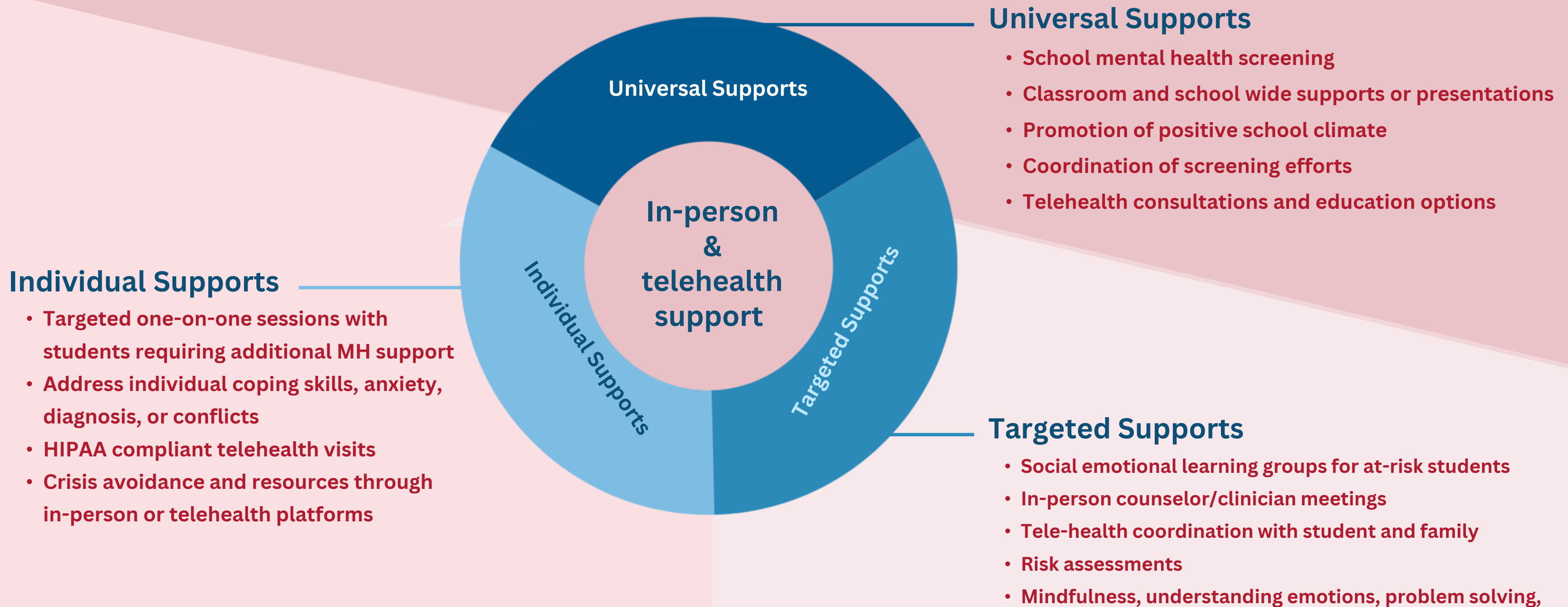
Proposed partnership between LEAs, communities, private business, USHE, and Utah State agencies



THANK YOU

Any Questions?

Braiding In-Person & Telehealth Support



Recommendations and Projections for School Based Health Centers in Utah
Education and Mental Health Coordinating Council
September 2024

Report Prepared by:

Aaron Fischer, PhD (University of Utah; Huntsman Mental Health Institute)

Karen Manotas, MD (University of Utah Health; Huntsman Mental Health Institute)

Tanya Albornoz, M.Ed (Utah State Board of Education)

Shelly Cooper, RN (Intermountain Health)