

# SUU

**SOUTHERN UTAH  
UNIVERSITY**

**TRANSPORTATION AND INFRASTRUCTURE  
SUBCOMMITTEE  
JANUARY 30, 2025**



Dedicated  
Funding

# Joe & Beverly Burgess Family Business Center

# 20,840 New Gross Square Feet

to serve the growing demand  
for programs in the Dixie L.  
Leavitt School of Business



**100% OF DEGREES IN 4 & 5  
STAR JOBS**



**66.3% INCREASE IN MAJOR**



**97% OVERALL JOB PLACEMENT  
RATE**





# **\$1.36 Million Dedicated Funds**

**DUE TO AN UNFAVORABLE BID  
ENVIRONMENT, CONSTRUCTION BIDS  
WERE OVER BUDGET (EVEN AFTER  
A VALUE-ENGINEERING PROCESS)**

## **Spring 2026 Completion**



# Facility Funding

**DEDICATED FUNDS: \$12.5 Million**

**INSTITUTIONAL FUNDS: \$2.34 Million**

**DONOR FUNDS: \$2.5 Million**

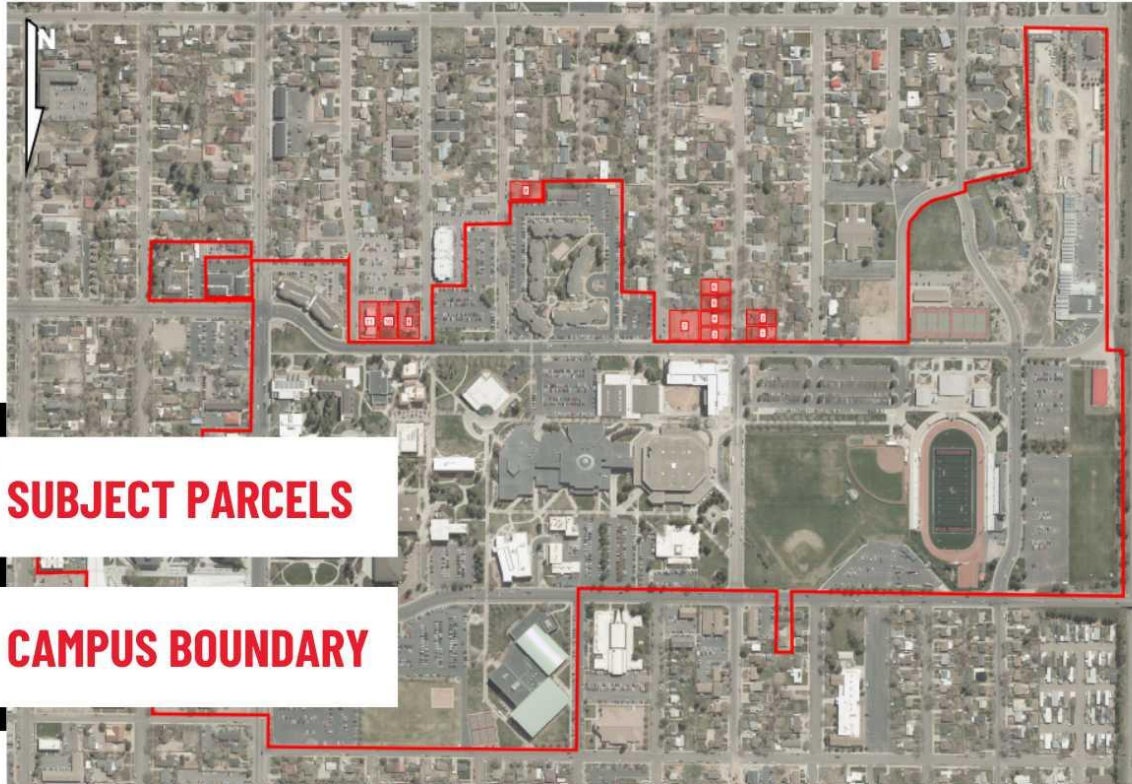
**ADDITIONAL DEDICATED  
FUNDING REQUEST: \$1.36 Million**

**TOTAL BUILDING COST: \$18.7 Million**

**South Campus**

**Property  
Acquisition**

# Once in a Generation Opportunity: South Campus Property



**SUBJECT PARCELS**

**CAMPUS BOUNDARY**

**DEDICATED FUNDS  
REQUEST:  
\$6,635,000**

# Thank You

