

A Limited Review of

Public Education Governance and Metrics

Office of the Legislative
Auditor General

Report to the UTAH LEGISLATURE



LEGISLATIVE AUDITOR GENERAL



1975 - 2025



THE MISSION OF THE LEGISLATIVE AUDITOR GENERAL IS TO

AUDIT · LEAD · ACHIEVE

WE HELP ORGANIZATIONS IMPROVE.

Audit Subcommittee

President J. Stuart Adams, Co-Chair
President of the Senate

Senator Kirk Cullimore
Senate Majority Leader

Senator Luz Escamilla
Senate Minority Leader

Speaker Mike Schultz, Co-Chair
Speaker of the House

Representative Jefferson Moss
House Majority Leader

Representative Angela Romero
House Minority Leader

Audit Staff

Kade R. Minchey, Auditor General, CIA,
CFE

Tyson Cabulagan, Senior
Methodologist, CFE

Brent Packer, Audit Supervisor

Delaney Rasband, Audit Staff

Office of the Legislative Auditor General

olag.utah.gov





Office of the Legislative Auditor General

Kade R. Minchey, Legislative Auditor General

W315 House Building State Capitol Complex | Salt Lake City, UT 84114 | Phone: 801.538.1033

Audit Subcommittee of the Legislative Management Committee

President J. Stuart Adams, Co-Chair | Speaker Mike Schultz, Co-Chair

Senator Kirk Cullimore | Representative Jefferson Moss

Senator Luz Escamilla | Representative Angela Romero

May 20, 2025

TO: THE UTAH STATE LEGISLATURE

Transmitted herewith is our report:

“A Limited Review of Public Education Governance and Metrics” [Report #2025-A].

An audit summary is found at the front of the report. The scope and objectives of the audit are included in the audit summary.

We will be happy to meet with appropriate legislative committees, individual legislators, and other state officials to discuss any item contained in the report.

Sincerely,

Kade R. Minchey, CIA, CFE

Auditor General

kminchey@le.utah.gov



Table of Contents

Chapter 1 Local Education Agency Outcome Dashboard.....	1
1.1 Results-Based Accountability Is the Role of a Governing Body.....	1
1.2 Dashboard Purpose.....	3
Appendix	7
A. Utah Districts Dashboard	9





OLAG DASHBOARD

GOVERNANCE AND ACCOUNTABILITY

► BACKGROUND

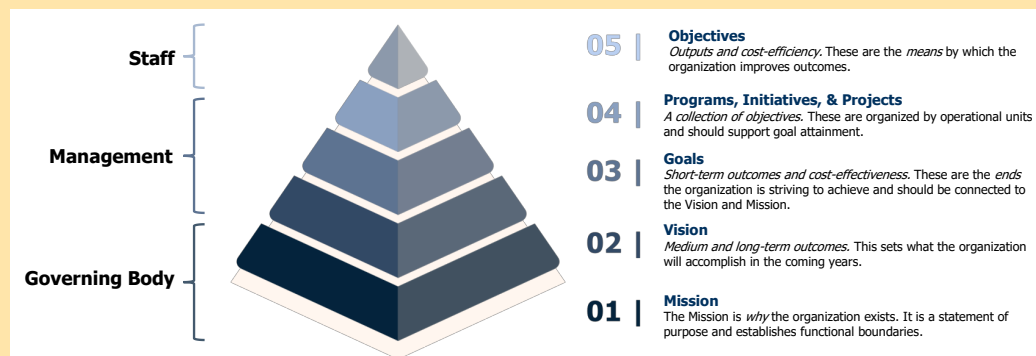
Our dashboard focuses primarily on the legislative perspective for governing the public education system. We acknowledge that there are a variety of perspectives on what the mission and goals of public education ought to be, including those set by USBE and local school boards. Our dashboard does not attempt to capture all of these. USBE and local school boards may build on these measures.

This dashboard displays student performance metrics such as proficiency and growth. These are high level metrics to look at how an LEA is improving. Ultimately, these metrics relate to the mission and vision of education. Other governing bodies and management teams may choose to expand upon the measures we outline based on unique challenges and local goals.

Public education is uniquely structured in Utah government. There are four principal governing bodies: the Utah Legislature, the Utah State Board of Education (USBE), the local school board (LSBs), and the Governor. These four governing bodies set the mission, vision, and values of the public education system, though each plays a different role.

A healthy governance structure is built on the foundation of an active governing body that clearly establishes the organization's mission, vision, and values. Management executes the mission and vision through strategic planning, implementation of programs and initiatives, and evaluation of the organization's operations. The governing body should approve strategic plan and monitor operations, holding management accountable for results. The following figure illustrates the relationship between organizational levels and the roles and responsibilities they hold.

GOOD GOVERNANCE STRUCTURE



Source: Auditor Generated from The Best Practice Handbook, 2023

Summary continues on back >>



REPORT SUMMARY

Legislative Mission and Vision

As outlined in *Utah Code* 53E-2-301(2):

“The Legislature recognizes that public education’s mission is to assure Utah the best educated citizenry in the world and each individual the training to succeed in a global society by providing students with:

- a) learning and occupational skills;
- b) character development;
- c) literacy and numeracy;
- d) high quality instruction;
- e) curriculum based on high standards and relevance; and
- f) effective assessment to inform high instruction and accountability.”

Dashboard

In the dashboard we show performance and growth in grades K-3, 3-10, ACT, and graduation. We also consider spending decisions as an indicator of how LEAs are going about accomplishing the mission and vision of public education. We also consider decisions on how taxpayer funds are spent as an indicator of how LEAs are going about accomplishing the mission and vision of public education to ensure return on investment for taxpayers. Therefore, we include spending data in our dashboards.

Click or Scan for School
District Dashboard



Dashboard Preview

This image shows the high level dashboard. There are additional dashboards that can be navigated to via the buttons on the top ribbon. These allow a deeper look at performance by grade level.

Overall Summary						
District Name	Avg. % Proficient (K-3)	Avg. % Proficient (3-10)	% 18+ Composite ACT Score	Grad Percent	Instruction Spending per pupil	Legislative Performance Metrics Met
Alpine District	67%	50%	69%	91%	\$7,161	2 of 7
Beaver District	79%	47%	59%	98%	\$9,119	3 of 7
Box Elder District	75%	41%	58%	87%	\$7,722	2 of 7
Cache District	72%	55%	71%	95%	\$7,293	4 of 7
Canyons District	70%	51%	73%	88%	\$7,268	2 of 7
Carbon District	64%	43%	48%	79%	\$9,225	1 of 7
Daggett District	78%	46%	Null	Null	\$20,670	3 of 7
Davis District	66%	46%	66%	93%	\$7,800	3 of 7
Duchesne District	61%	34%	51%	83%	\$8,391	2 of 7
Emery District	68%	41%	47%	89%	\$9,608	2 of 7
Garfield District	60%	38%	58%	90%	\$7,414	2 of 7
Grand District	44%	29%	46%	85%	\$10,126	1 of 7
Granite District	57%	32%	45%	79%	\$7,056	2 of 7
Iron District	66%	49%	67%	91%	\$6,220	2 of 7
Jordan District	59%	43%	66%	90%	\$6,782	1 of 7
Juab District	66%	38%	55%	97%	\$8,901	3 of 7
Kane District	75%	51%	68%	97%	\$9,169	3 of 7
Logan City District	73%	37%	56%	91%	\$8,328	2 of 7
Millard District	65%	52%	60%	94%	\$9,822	3 of 7
Morgan District	81%	55%	65%	93%	\$7,672	3 of 7
Murray District	68%	44%	59%	83%	\$8,075	2 of 7
Nebo District	62%	43%	63%	94%	\$6,083	3 of 7
North Sanpete District	67%	41%	57%	83%	\$8,332	2 of 7
North Summit District	81%	59%	68%	91%	\$11,126	3 of 7
Ogden City District	46%	26%	33%	89%	\$7,245	1 of 7
Park City District	81%	61%	73%	96%	\$13,125	5 of 7



Chapter 1

Local Education Agency Outcome Dashboard

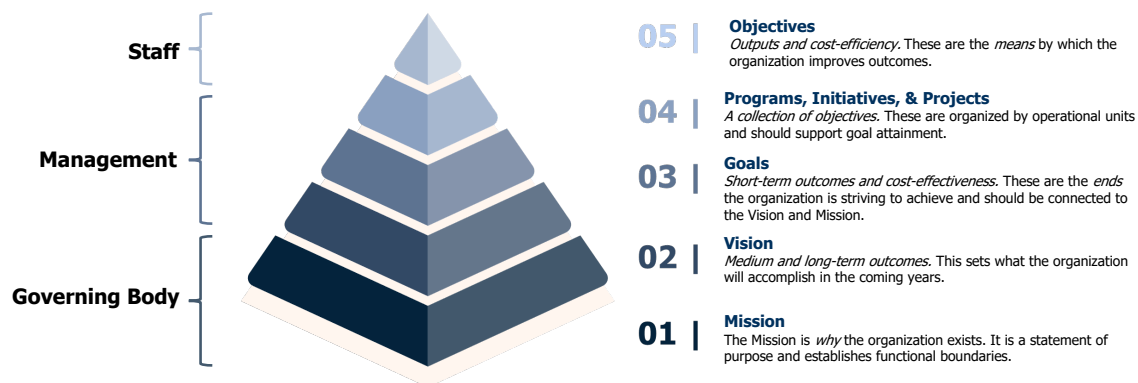
1.1 Results-Based Accountability Is the Role of a Governing Body

A healthy governance structure is built on the foundation of an active governing body that clearly establishes the organization's mission, vision, and values. Management executes the mission and vision through strategic planning, implementation of programs and initiatives, and evaluation of the organization's operations. The governing body should approve strategic plans and monitor operations, holding management accountable for results. The following figure illustrates the relationship between organizational levels and the roles and responsibilities they hold.

Click or Scan for School District Dashboard



Figure 1.1 Governing Bodies Set the Mission, Vision, and Values for the Organization. Management executes the mission and vision, while the governing board holds management accountable for results. Management delegates work to staff and monitors performance.



Source: *The Best Practice Handbook, 2023.*



Governing bodies set the mission, vision, and values of the organization, and hold management accountable for results.

As seen in the figure, it is the responsibility of the governing body to broadly establish the structures necessary to direct, guide, and monitor the organization. Management is responsible for setting goals that, if achieved, will realize the mission and vision of the organization. It does this through implementation of programs and initiatives, and delegation to operational staff. Staff adhere to policies

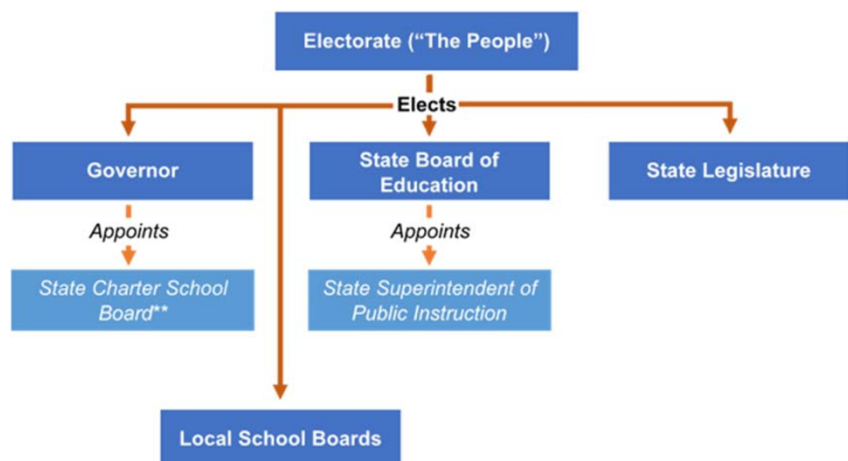


and procedures and carry out much of the production and service delivery of the organization.

Public Education Governance

Public education is uniquely structured in Utah government. There are four principal governing bodies: the Utah Legislature, the Utah State Board of Education (USBE), local school boards (LSBs), and the Governor.¹ These four governing bodies set the mission, vision, and values of the public education system, though each plays a different role. The Legislature appropriates funding and has set the broadest goals for the system. The Legislature is responsible for holding local school communities “accountable for results.”² USBE is vested with “general control and supervision of the public education system” by the *Utah Constitution*.³ USBE has general control and supervision of the public education system. They set both the standards and the strategic direction for the public education system. LSBs governs school districts at the local level and have statutory authority for taxes, staffing, capital facilities, boundaries, and school management. The Governor’s role is limited to budget recommendations, and general and line-item veto authority. *Utah Code* also grants the Governor authority to appoint members of the State Charter School Board. Public education’s mission is “carried out through a responsive educational system that guarantees local school communities’ autonomy, flexibility, and client choice.”⁴

Each governing board can and should hold smaller units of the organization accountable for the results it has determined to be of significance. At the same time, each governing body should allow discretion to determine the unique needs faced by each unit of government, and how to address their



*** The governing board of individual charter schools are not elected like local school district boards.*

Source: Auditor Generated

¹ Other governing bodies also play a role. However, we focus on these four as they describe the core drivers of the public education system and act as a sort of nested governance structure.

² *Utah Code* [53E-2-301 \(3\)\(c\)](#)

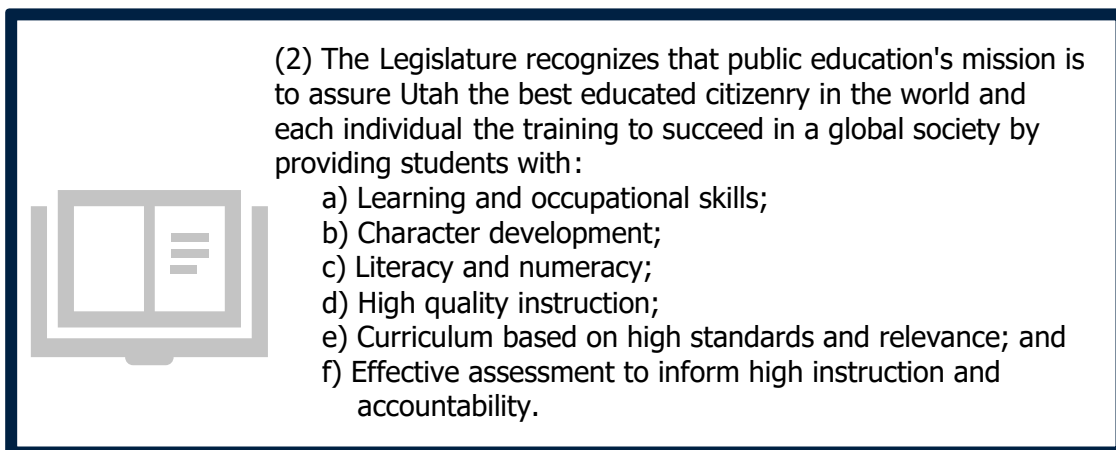
³ *Utah Constitution, Article X, Section 3*

⁴ *Utah Code* [53E-2-301 \(3\)\(c\)](#)

distinct challenges. While each level of governance plays an essential role in setting mission and direction, for the purposes of this report, we focus on high level learning and achievement.

Our dashboard focuses primarily on the legislative perspective for governing the public education system. We acknowledge that there are a variety of perspectives on what the mission and goals of public education ought to be, including those set by USBE and LSBs. Our dashboard does not attempt to capture all of these. USBE and LSBs may build on these measures. The following lists several of the goals of public education, as outlined in *Utah Code*.

Figure 1.2 The Legislature has Set the Mission of Public Education as to Assure Utah has the Best Educated Citizenry. *Utah Code* outlines six key outcome to reach the mission the Legislature have outlined.



Source: Utah Code 53E-2-301 (2).

We also consider decisions on how taxpayer funds are spent as an indicator of how LEAs are going about accomplishing the mission and vision of public education to ensure return on investment for taxpayers. Costs are a crucial consideration in how districts use funds. Therefore, we include spending data in our dashboards.

1.2 Dashboard Purpose

Our dashboard displays student performance metrics of proficiency, growth, and spending. These are high level metrics to look at how a district is improving. Ultimately, these metrics relate to governance and decisions. Other governing bodies and management teams may choose to expand upon the measures we outline based on unique challenges and local goals. The dashboard is organized into two main sections: performance and spending.



Performance

The performance section allows you to explore several dashboards covering academic performance across different grade levels: Overall, Grades K-3, Grades 3-10, and ACT scores. Each grade level or area has a dedicated dashboard, allowing you to analyze district performance in detail. Use the icons at the top of each page to switch between sections.

Overall Summary. This section is a high-level look at performance and spending, allowing the user to compare districts across the state. It shows the average proficiency of all tested subjects. For a more detailed look, the user can navigate to K-3, 3-10, ACT, and graduation rates to see more details over time.

K-3. This uses Acadience test data to examine performance and achievement for early learning. While the Acadience test can be given to grades 4-6, our dashboard only focuses on results for K-3. Acadience only tests literacy and numeracy.

3-10. This summarizes performance for grades 3-10 using RISE and Utah Aspire Plus tests. RISE is comprised of English language arts, math, and science for grades 3-8 (science is tested starting in 4th grade). Utah Aspire Plus is used in grades 9 and 10, testing students in English, math, and science.

ACT & Graduation Rates (11-12). All students take the ACT in 11th grade. Graduation rates are used to look at achievement for students in 12th grade.

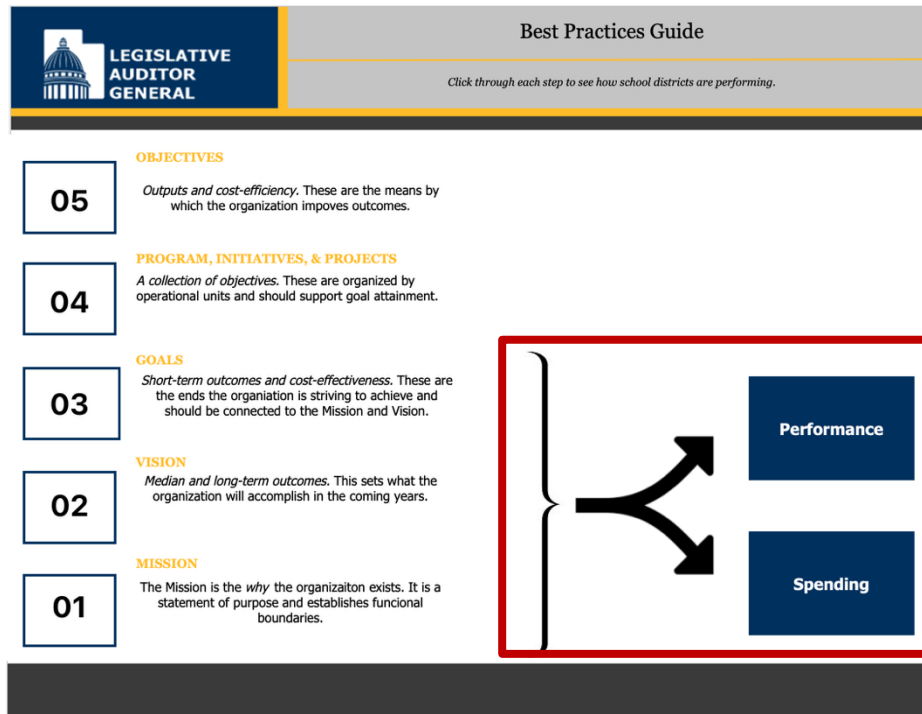
Spending

This dashboard provides insight into financial aspects and retention of districts. The included figures address the following topics:

- Expenditures by District: View of how each school district allocates its budget.
- Teacher Retention Rates: Examine trends in teacher retention to understand stability within each district. This metric relates to high quality instruction as shown in Figure 1.2.

Navigating the Dashboard

Main Navigation: Use the navigation buttons (highlighted with red box) on this page to access the performance and spending dashboards.



Dashboard Navigation: Each dashboard includes navigation buttons to move between related dashboards within the same section or return to the main navigation page.

Overall Summary

District Name	Avg. % Proficient (K-3)	Avg. % Proficient (3-10)	% 18+ Composite ACT Score	Grad Percent	Instruction Spending per pupil	Legislative Performance Metrics Met
Alpine District	67%	50%	69%	91%	\$6,870	2 of 7
Beaver District	79%	47%	59%	98%	\$8,853	3 of 7
Box Elder District	75%	41%	58%	87%	\$7,445	2 of 7
Cache District	72%	55%	71%	95%	\$7,058	4 of 7
Canyons District	70%	51%	73%	88%	\$5,805	2 of 7
Carbon District	64%	43%	48%	79%	\$8,786	1 of 7
Daggett District	78%	46%	Null	Null	\$16,860	3 of 7
Davis District	66%	46%	66%	93%	\$7,594	3 of 7
Duchesne District	61%	34%	51%	83%	\$7,886	2 of 7
Emery District	68%	41%	47%	89%	\$9,024	2 of 7
Garfield District	60%	38%	58%	90%	\$7,158	2 of 7
Grand District	44%	29%	46%	85%	\$9,751	1 of 7
Granite District	57%	32%	45%	79%	\$6,290	2 of 7
Iron District	66%	49%	67%	91%	\$5,840	2 of 7
Jordan District	59%	43%	66%	90%	\$6,587	1 of 7
Juab District	66%	38%	55%	97%	\$4,742	3 of 7
Kane District	75%	51%	68%	97%	\$8,682	3 of 7
Logan City District	73%	37%	56%	91%	\$7,889	2 of 7
Millard District	65%	52%	60%	94%	\$9,333	3 of 7
Morgan District	81%	55%	65%	93%	\$7,533	3 of 7
Murray District	68%	44%	59%	83%	\$7,872	2 of 7
Nebo District	62%	43%	63%	94%	\$5,811	3 of 7
North Sanpete District	67%	41%	57%	83%	\$7,591	2 of 7
North Summit District	81%	59%	68%	91%	\$10,866	3 of 7
Ogden City District	46%	26%	33%	89%	\$7,040	1 of 7
Park City District	81%	61%	73%	96%	\$11,632	5 of 7
Utah District	74%	53%	Null	Null	\$15,236	2 of 7



Filters:

Performance Dashboards: Filter charts by school district or subject area to tailor the data to your interests.



District Spending Dashboard: Filter by school district to view expenditure data relevant to specific districts.



Legislative Performance Metrics: On each dashboard there is a summary of how many of the selected Legislative Performance Metrics a district has met. Auditors focused on the following seven metrics that were tied to student achievement:

- 4-year cohort graduation rate
- Percent of students making typical or better progress on acadience math
- Percent of students making typical or better progress on reading
- Percent of student scoring 18 or better on the ACT
- Percent of students proficient on RISE ELA
- Percent of students proficient on RISE science
- Percent of students proficient on RISE math

Legislative Performance Metrics Met

2 of 7

A sample of the metrics is shown on the left. The seven metrics chosen are tied to Acadience Testing, RISE testing, ACT, and Graduation rates.

Appendix





A. Utah Districts Dashboard





Overall Summary



District Name	Avg. % Proficient (K-3)	Avg. % Proficient (3-10)	% 18+ Composite ACT Score	Grad Percent	Instruction Spending per pupil	Legislative Performance Metrics Met
Alpine District	67%	50%	69%	91%	\$7,161	2 of 7
Beaver District	79%	47%	59%	98%	\$9,119	3 of 7
Box Elder District	75%	41%	58%	87%	\$7,722	2 of 7
Cache District	72%	55%	71%	95%	\$7,293	4 of 7
Canyons District	70%	51%	73%	88%	\$7,268	2 of 7
Carbon District	64%	43%	48%	79%	\$9,225	1 of 7
Daggett District	78%	46%	Null	Null	\$20,670	3 of 7
Davis District	66%	46%	66%	93%	\$7,800	3 of 7
Duchesne District	61%	34%	51%	83%	\$8,391	2 of 7
Emery District	68%	41%	47%	89%	\$9,608	2 of 7
Garfield District	60%	38%	58%	90%	\$7,414	2 of 7
Grand District	44%	29%	46%	85%	\$10,126	1 of 7
Granite District	57%	32%	45%	79%	\$7,056	2 of 7
Iron District	66%	49%	67%	91%	\$6,220	2 of 7
Jordan District	59%	43%	66%	90%	\$6,782	1 of 7
Juab District	66%	38%	55%	97%	\$8,901	3 of 7
Kane District	75%	51%	68%	97%	\$9,169	3 of 7
Logan City District	73%	37%	56%	91%	\$8,328	2 of 7
Millard District	65%	52%	60%	94%	\$9,822	3 of 7
Morgan District	81%	55%	65%	93%	\$7,672	3 of 7
Murray District	68%	44%	59%	83%	\$8,075	2 of 7
Nebo District	62%	43%	63%	94%	\$6,083	3 of 7
North Sanpete District	67%	41%	57%	83%	\$8,332	2 of 7
North Summit District	81%	59%	68%	91%	\$11,126	3 of 7
Ogden City District	46%	26%	33%	89%	\$7,245	1 of 7
Park City District	81%	61%	73%	96%	\$13,125	5 of 7
Piute District	74%	33%	Null	Null	\$17,326	2 of 7



SCHOOL DISTRICTS IN UTAH (K-3 Literacy)



Legislative Performance Metrics Met

2 of 7

Total Schools

912 ↓

Total Students

592,467 ↓

English Learner

9% ↑

Economically Disadvantaged

32% ↓

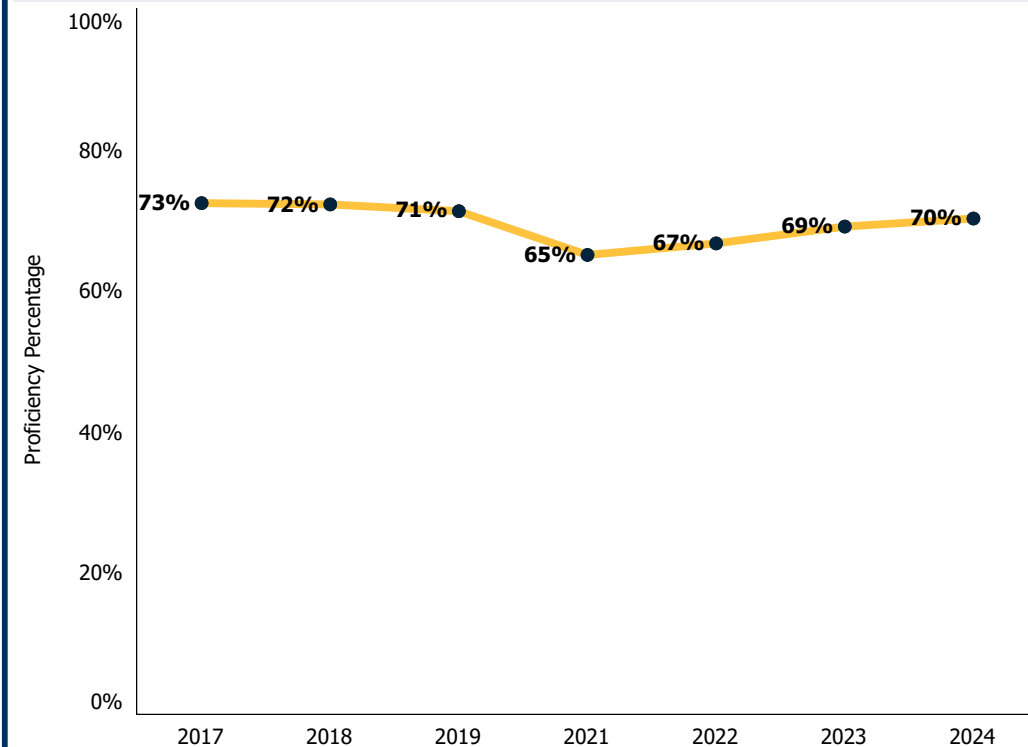
Minority Students

21% ↑

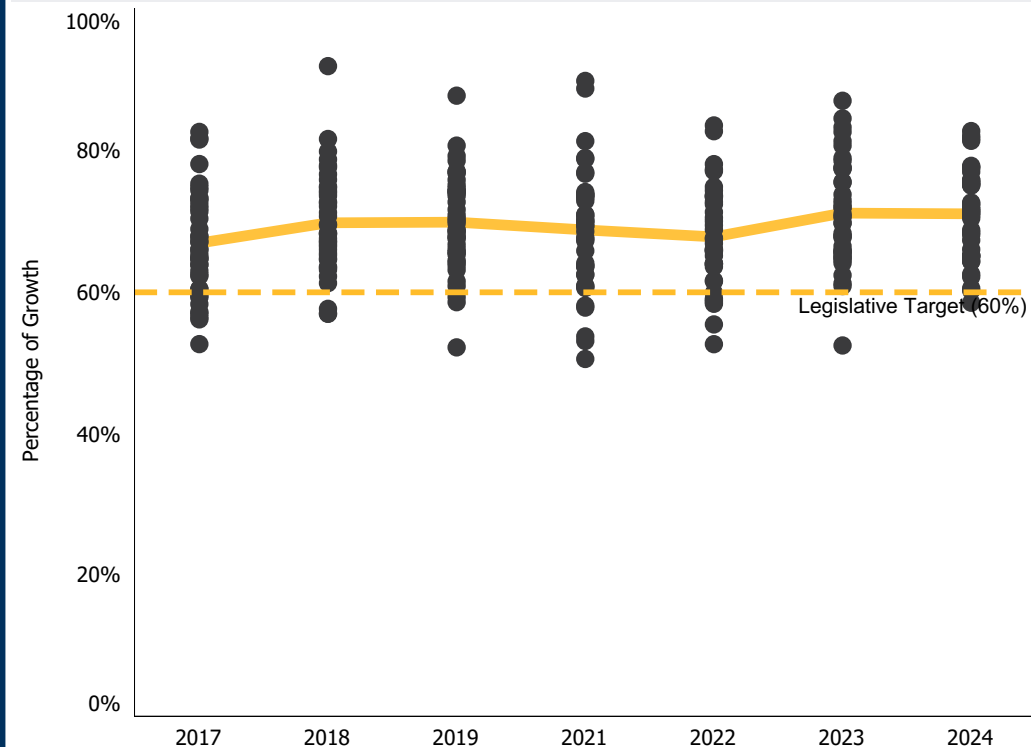
Special Education

14% ↑

Percent Proficient K-3



Percent Meeting Growth



Legend:



Below Average



Above Average



Average of Districts



Other Districts



SCHOOL DISTRICTS IN UTAH (K-3 Math)



Legislative Performance Metrics Met

2 of 7

Total Schools

912 ↓

Total Students

592,467 ↓

English Learner

9% ↑

Economically Disadvantaged

32% ↓

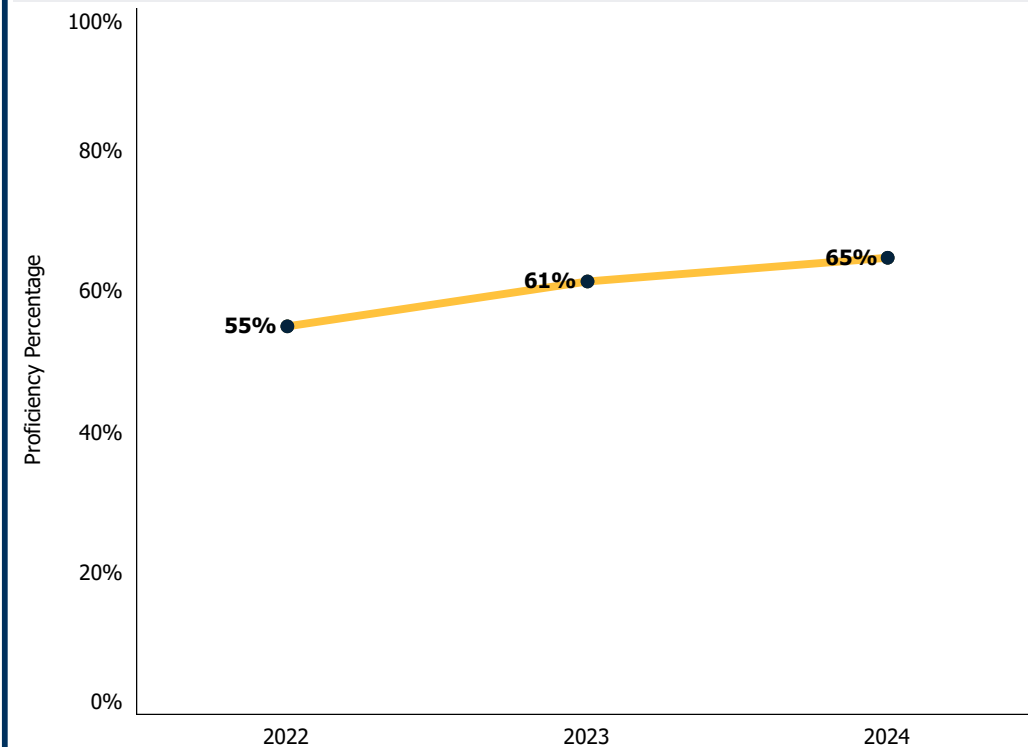
Minority Students

21% ↑

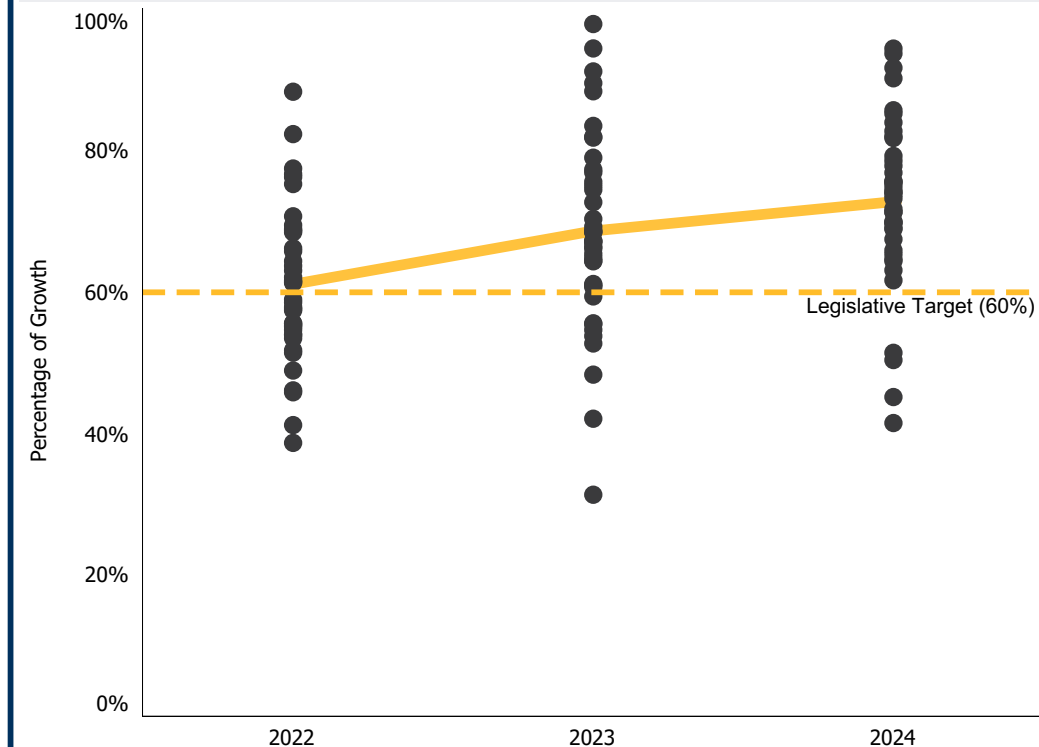
Special Education

14% ↑

Percent Proficient K-3



Percent Meeting Growth



Legend:



Below Average



Above Average



Average of Districts



Other Districts



SCHOOL DISTRICTS IN UTAH (3-10 ELA)



Legislative Performance
Metrics Met

2 of 7

Total Schools

912

↓

Total Students

592,467

↓

English Learner

9%

↑

Economically
Disadvantaged

32%

↓

Minority
Students

21%

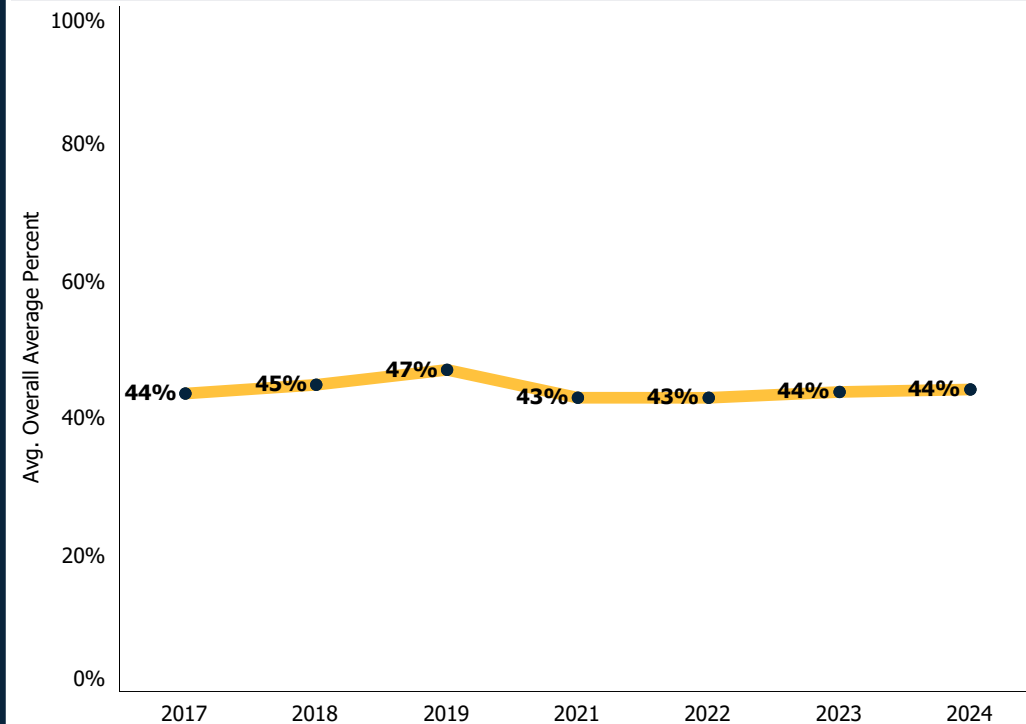
↑

Special
Education

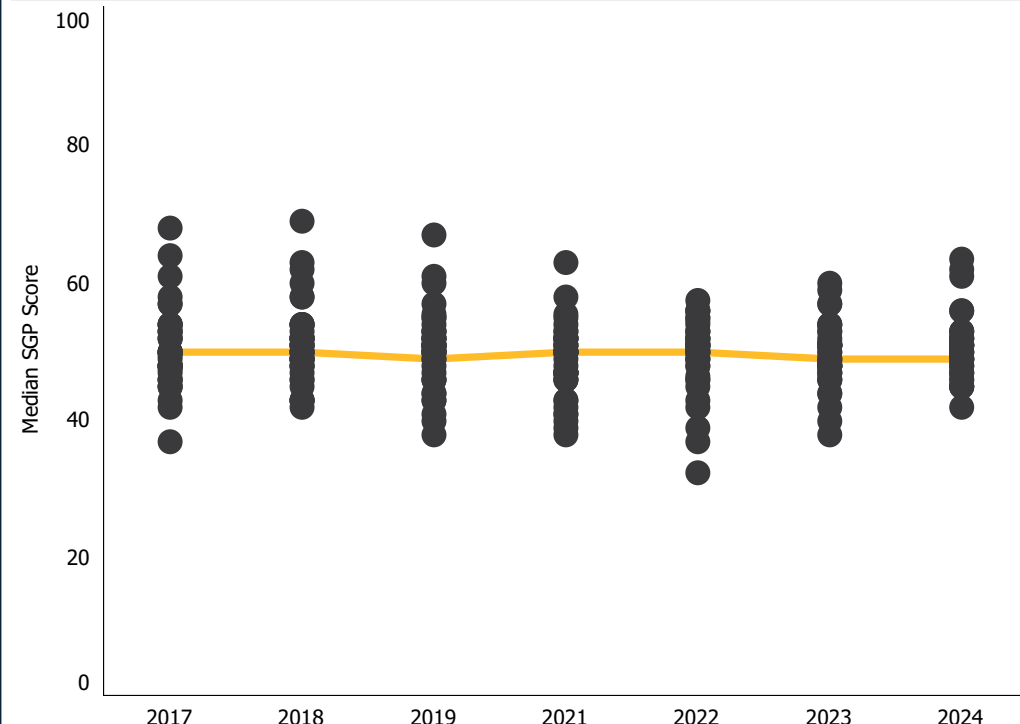
14%

↑

Percent Proficient 3-10



Average Student Growth



Legend:



Below Average



Above Average



Average of Districts



Other Districts



HOME

Overall

ACT/
Grad

K-3

3-10

Filters

District Names
SCHOOL DISTRICTS IN UTAH

Subject
Math

SCHOOL DISTRICTS IN UTAH (3-10 Math)



Legislative Performance
Metrics Met

2 of 7

Total Schools

912 ↓

Total Students

592,467 ↓

English Learner

9% ↑

Economically
Disadvantaged

32% ↓

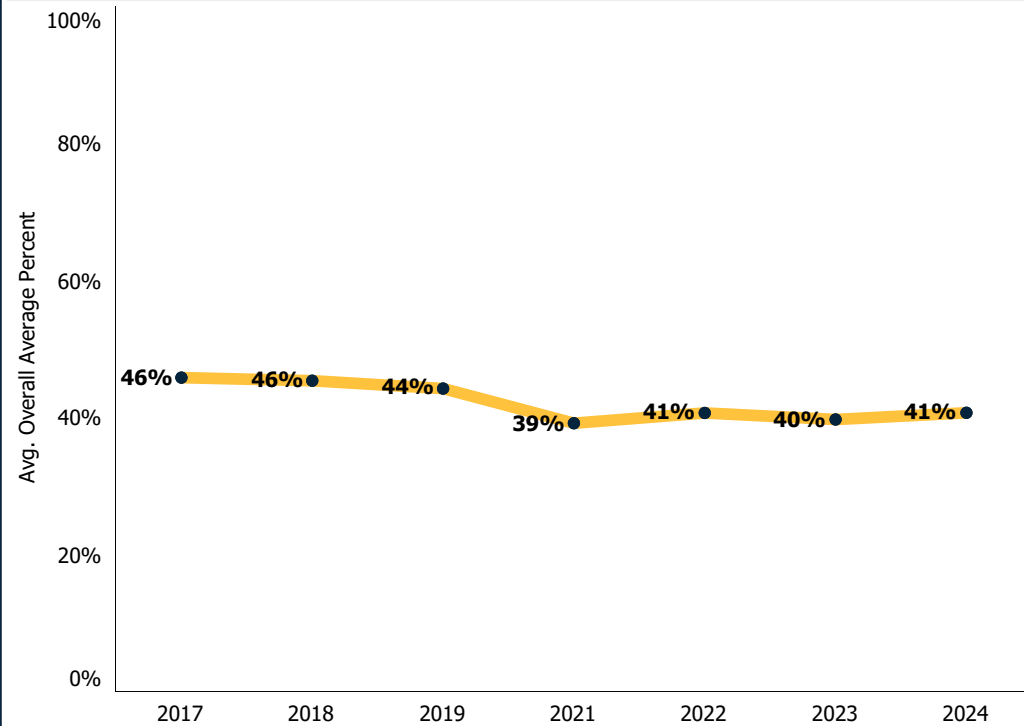
Minority
Students

21% ↑

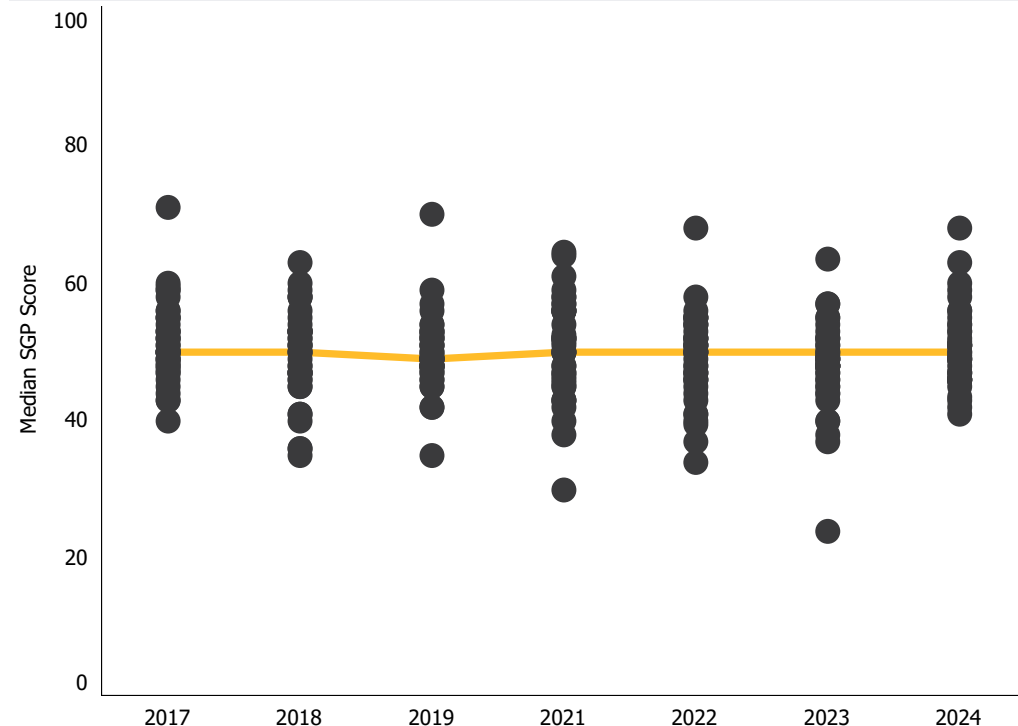
Special
Education

14% ↑

Percent Proficient 3-10



Average Student Growth



Legend:



Below Average



Above Average



Average of Districts



Other Districts



HOME

Overall

ACT/
Grad

K-3

3-10

Filters

District Names
SCHOOL DISTRICTS IN UTAH

Subject
Science

SCHOOL DISTRICTS IN UTAH (3-10 Science)



Legislative Performance
Metrics Met

2 of 7

Total Schools

912 ↓

Total Students

592,467 ↓

English Learner

9% ↑

Economically
Disadvantaged

32% ↓

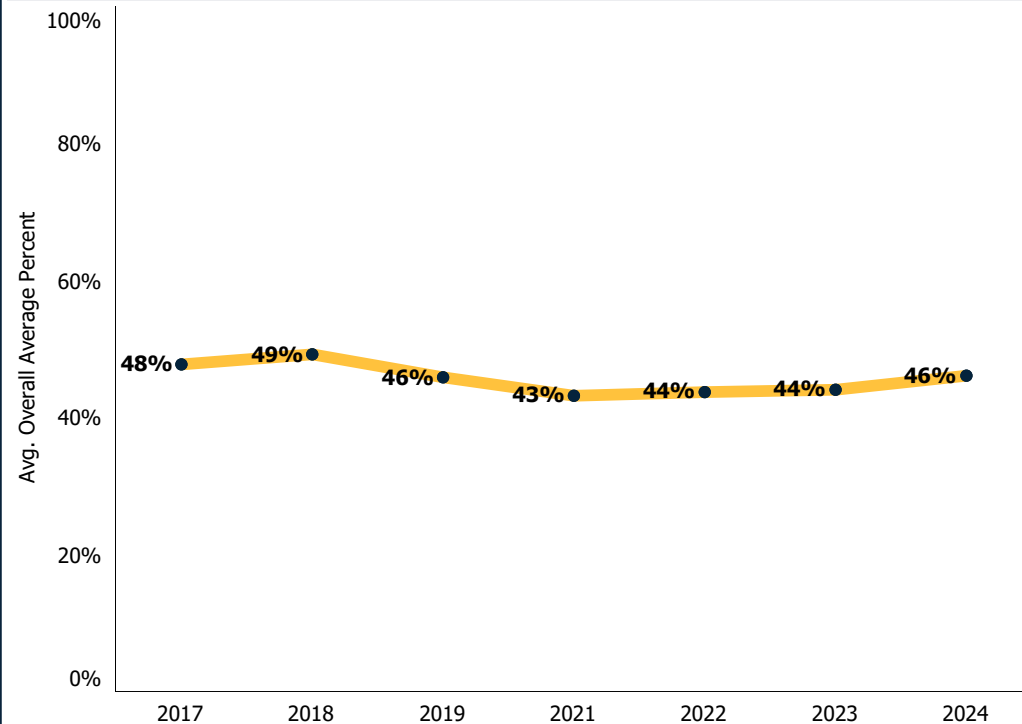
Minority
Students

21% ↑

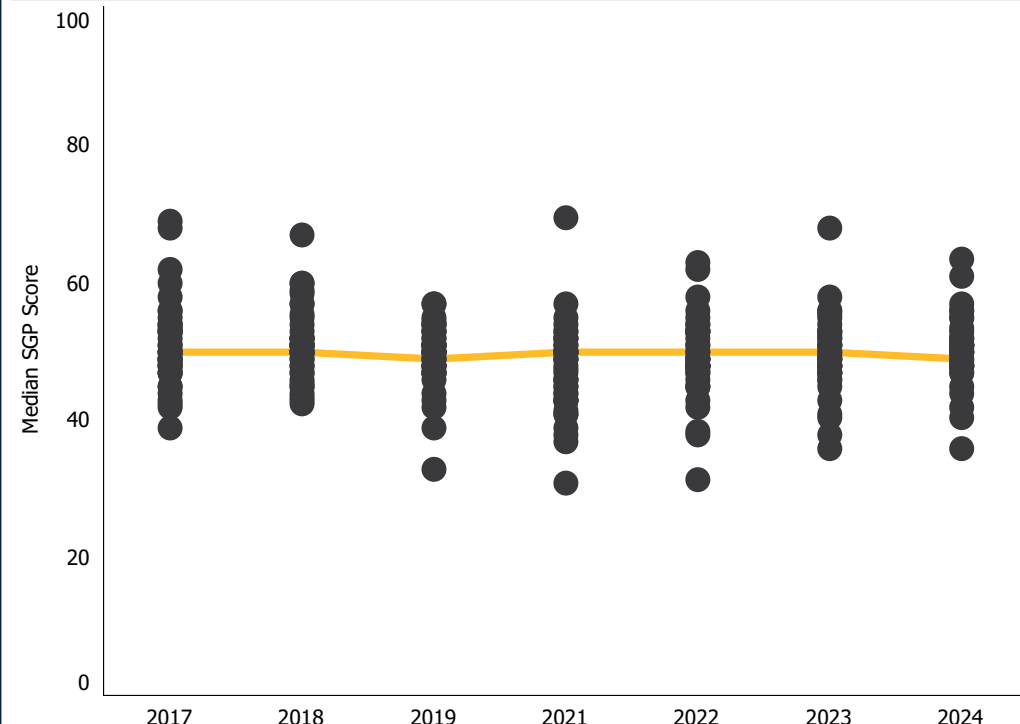
Special
Education

14% ↑

Percent Proficient 3-10



Average Student Growth



Legend:



Below Average



Above Average



Average of Districts



Other Districts



Filters

District Names
SCHOOL DISTRICTS IN UTAH

Subject
Composite Score

SCHOOL DISTRICTS IN UTAH



Legislative
Performance Metrics
Met

Total Schools

912 ↓

Total Students

592,467 ↓

English Learner

9% ↑

Economically
Disadvantaged

32% ↓

Minority
Students

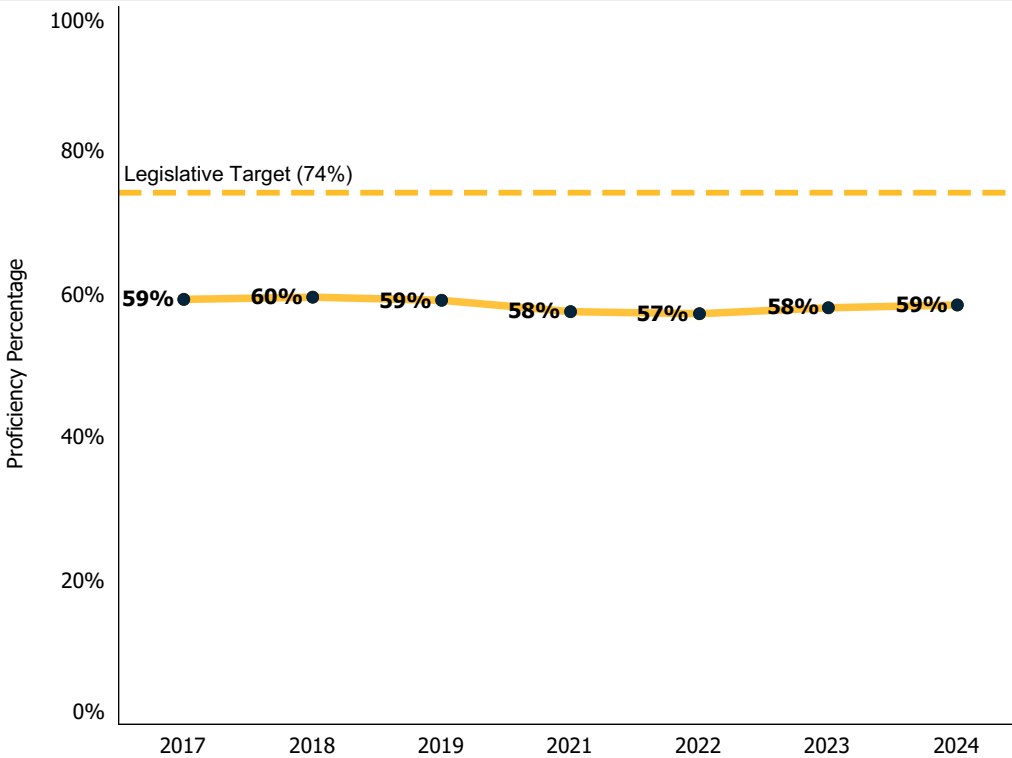
21% ↑

Special
Education

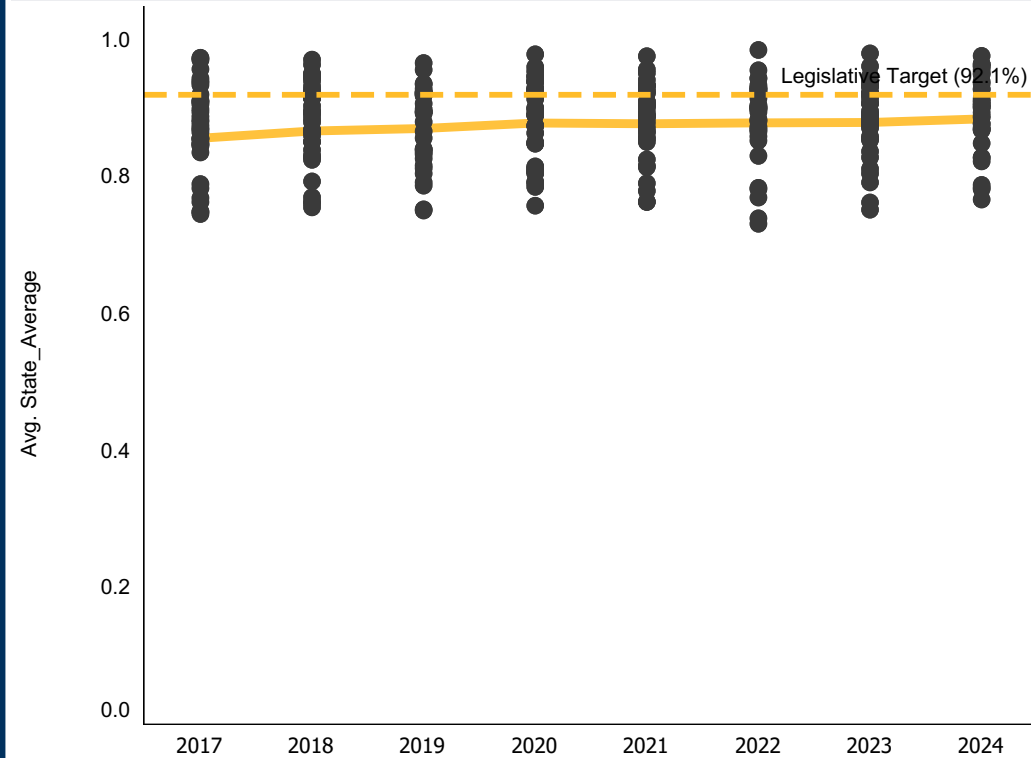
14% ↑

2 of 7

Percent Proficient ACT (18+ Composite Score)



Graduation Percent



Legend:



Above Average



Above Average



Average of Districts



Other Districts



School District Spending

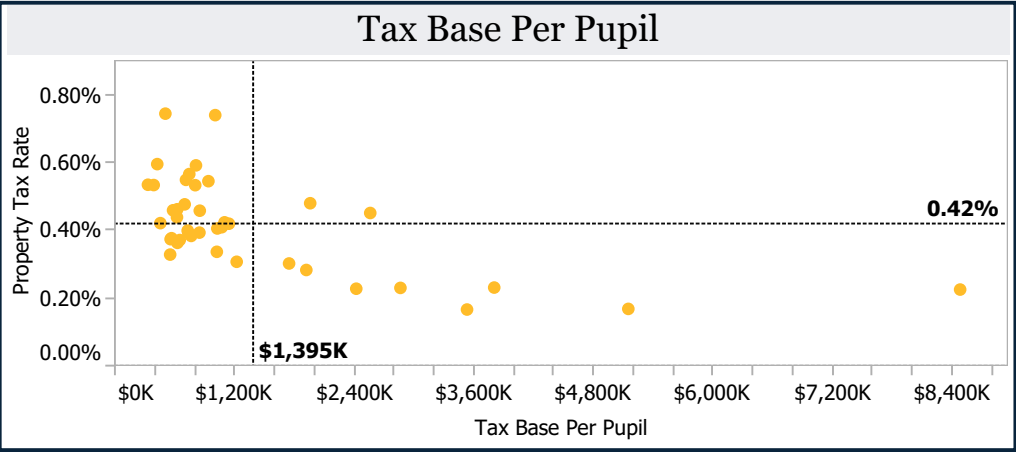
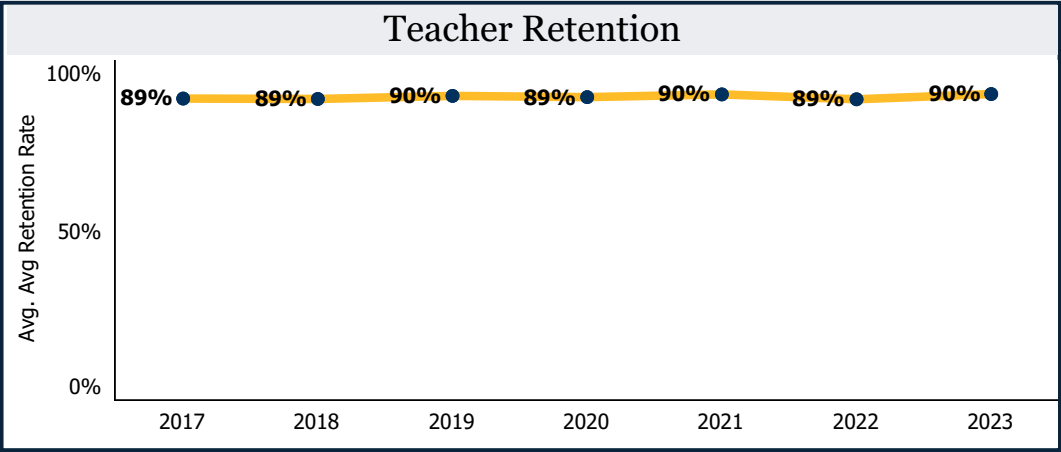
SCHOOL DISTRICTS IN UTAH

Legislative Performance Metrics Met

Total Schools	Total Students	English Learner	Economically Disadvantaged	Minority Students	Special Education
912	592,467	9%	32%	21%	14%

2 of 7

Classroom Spending	Instruction	55%	\$9,233.60	\$9,234
	Support Services	9%	\$1,544.1	\$1,544
Non-Classroom Spending	Administration	11%	\$1,830.3	\$1,830
	Debt Services	7%	\$1,236.3	\$1,236
	Transportation	4%	\$699.0	\$699
	Other Services	15%	\$2,458.3	\$2,458
Facility Aquisition and Construction		\$1,332M	\$4,042.8	\$4,043



Legend:

Below Average

Above Average

Average of Districts

Other Districts



THE MISSION OF THE LEGISLATIVE AUDITOR GENERAL IS TO

AUDIT · LEAD · ACHIEVE

WE HELP ORGANIZATIONS IMPROVE.
