

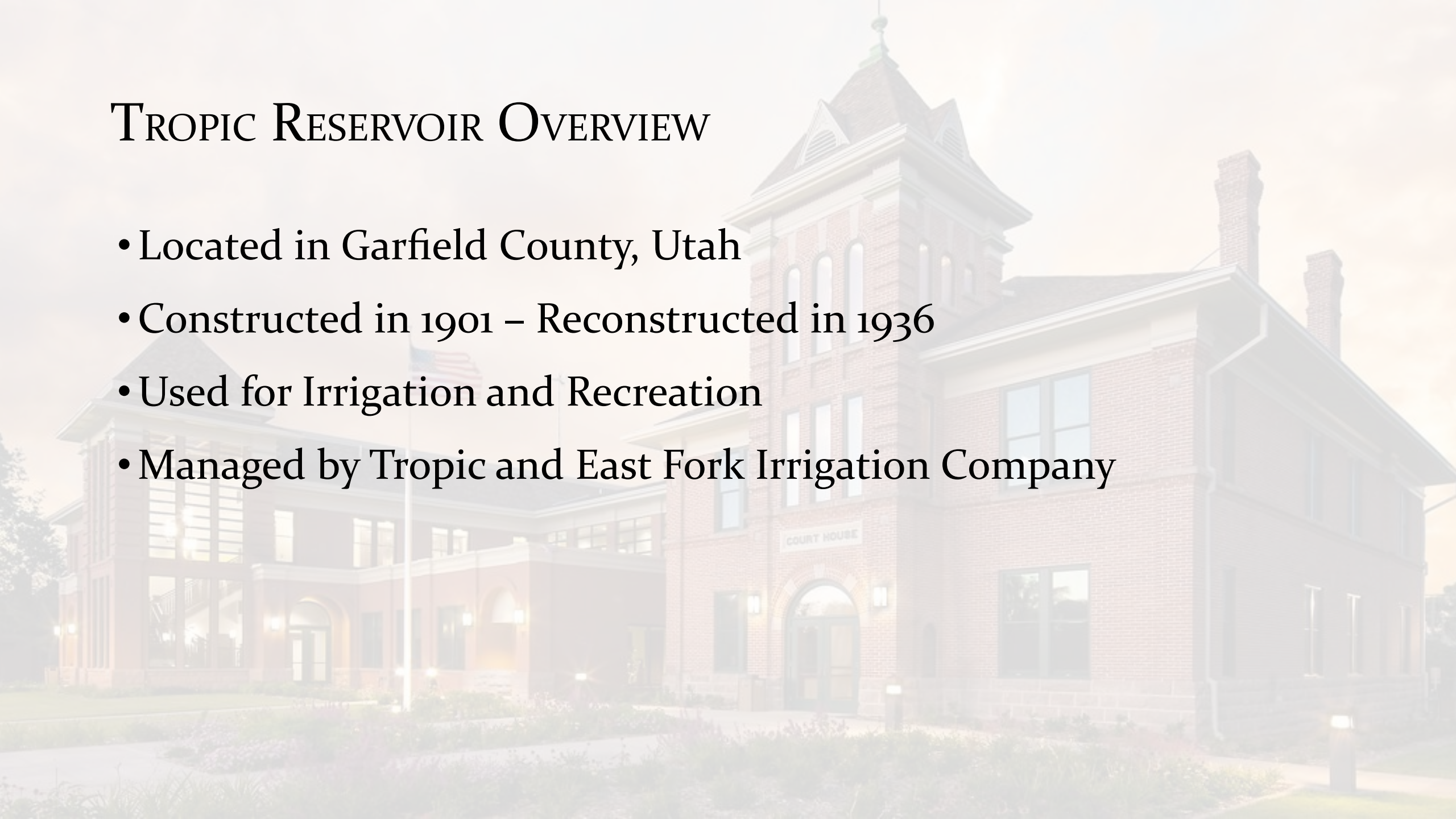




THE IMPACTS OF RESTRICTED STORAGE AT TROPIC RESERVOIR

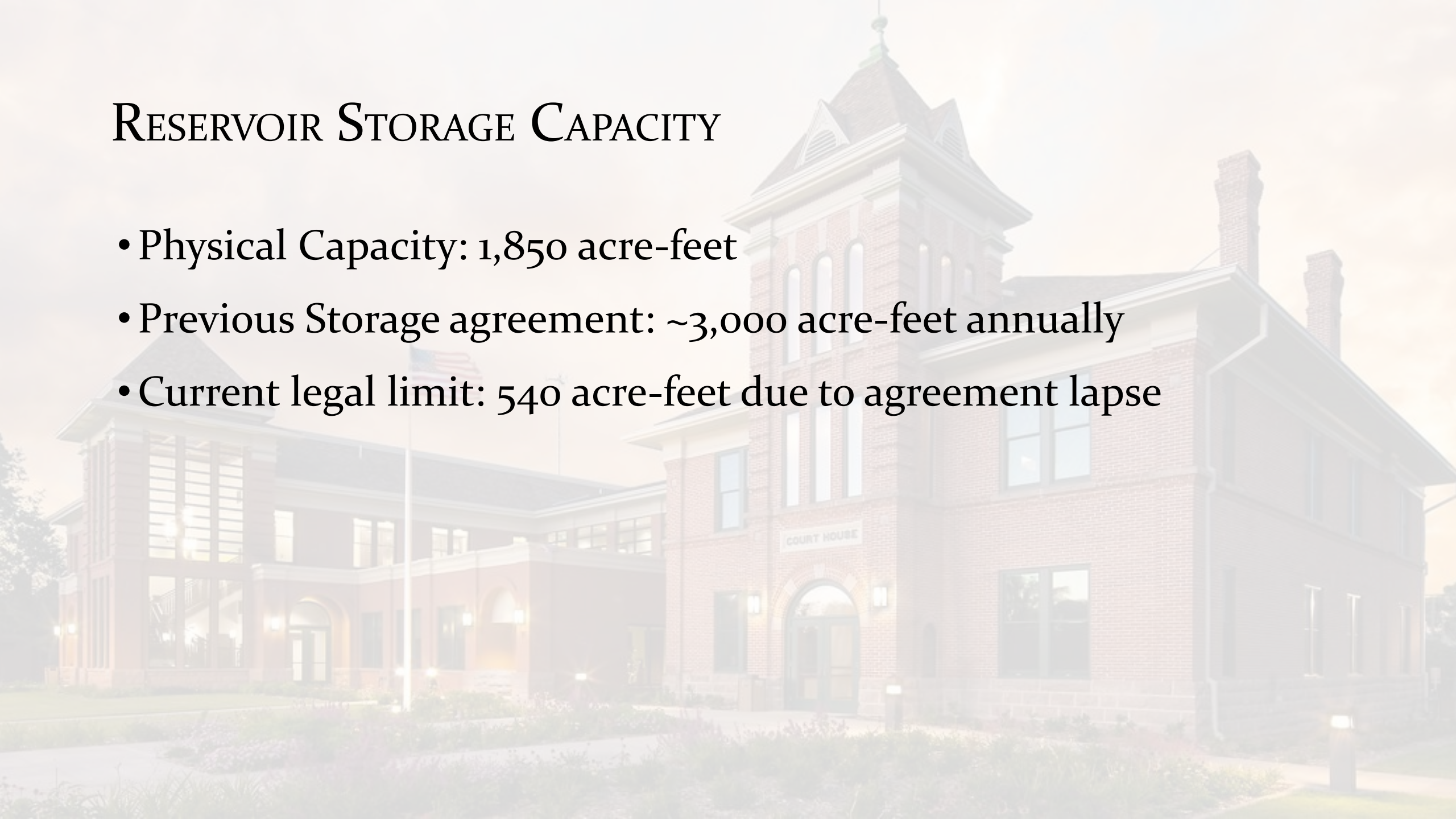
TROPIC RESERVOIR OVERVIEW

- Located in Garfield County, Utah
- Constructed in 1901 – Reconstructed in 1936
- Used for Irrigation and Recreation
- Managed by Tropic and East Fork Irrigation Company



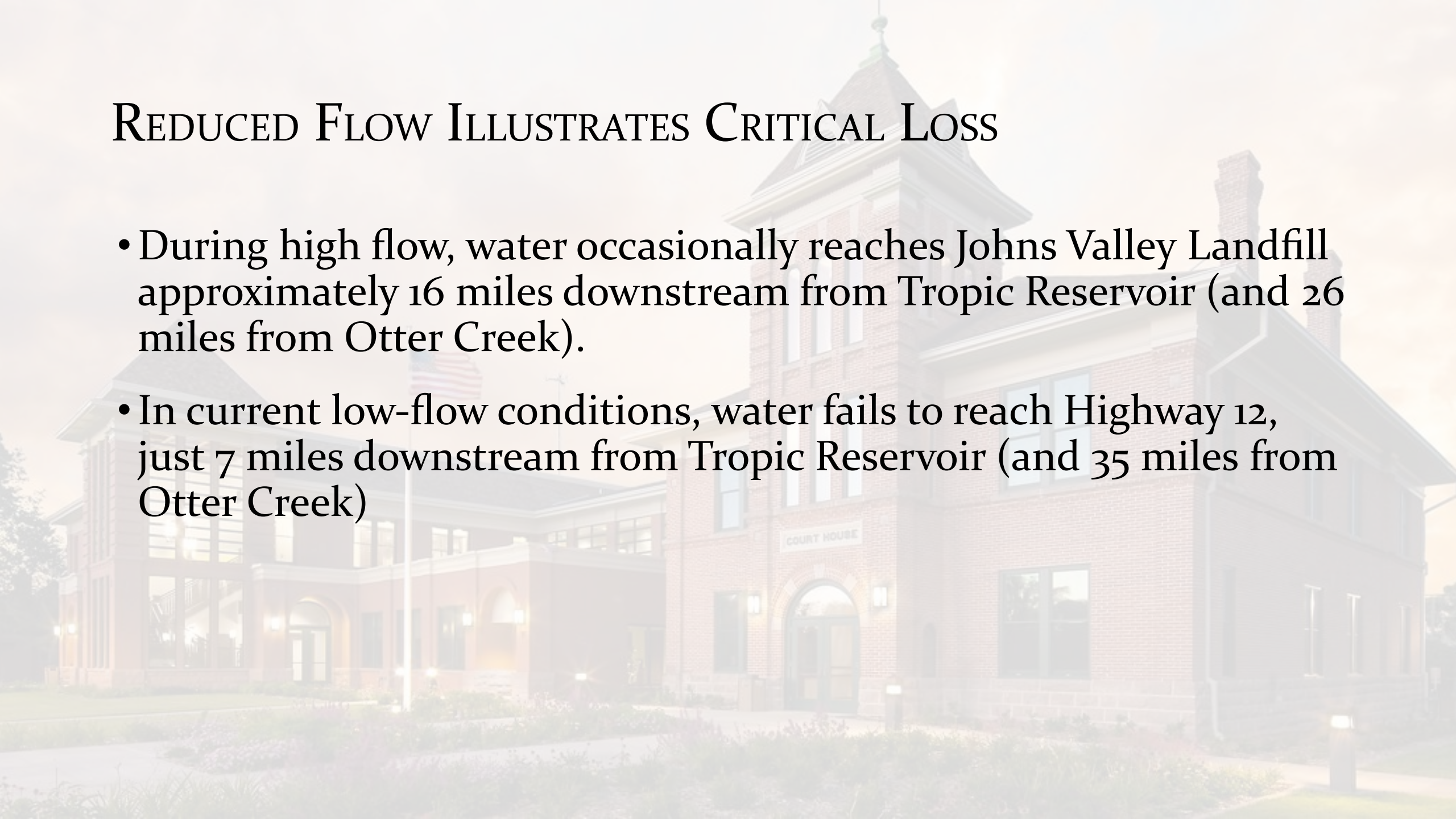
RESERVOIR STORAGE CAPACITY

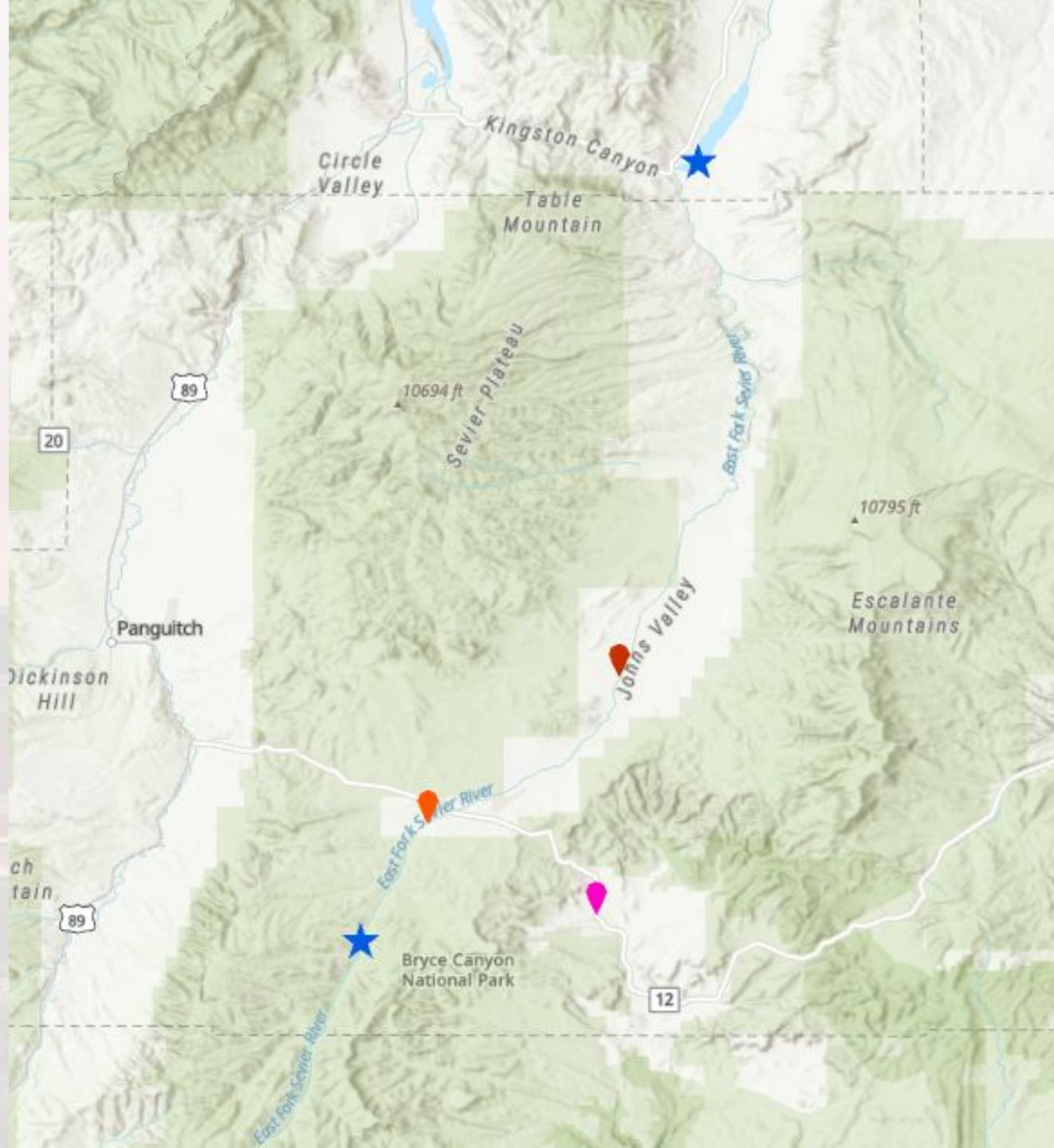
- Physical Capacity: 1,850 acre-feet
- Previous Storage agreement: ~3,000 acre-feet annually
- Current legal limit: 540 acre-feet due to agreement lapse



REDUCED FLOW ILLUSTRATES CRITICAL LOSS

- During high flow, water occasionally reaches Johns Valley Landfill approximately 16 miles downstream from Tropic Reservoir (and 26 miles from Otter Creek).
- In current low-flow conditions, water fails to reach Highway 12, just 7 miles downstream from Tropic Reservoir (and 35 miles from Otter Creek)





IMPACTS OF STORAGE RESTRICTION

- Reduced irrigation supply for local farms
- No carryover water during dry years
- Economic impacts on ranchers, growers, and tourism
- Reduced recreation access (fishing/boating)
- Pressure on Tropic's culinary system

EAST FORK AT HIGHWAY 12



IMPACTS OF STORAGE RESTRICTION



IMPACTS OF STORAGE RESTRICTION



IMPACTS OF STORAGE RESTRICTION



IMPACTS OF STORAGE RESTRICTION



