

January 26, 2026

\$1.5 million one-time FY27 General Fund

Social Services Appropriations Subcommittee



Utah Department of
Health & Human
Services

Contributors:

Correctional Health
Services Director
Dr. Marc Wisner

DHHS Executive
Medical Director
Dr. Stacey Bank



Correctional Health Service

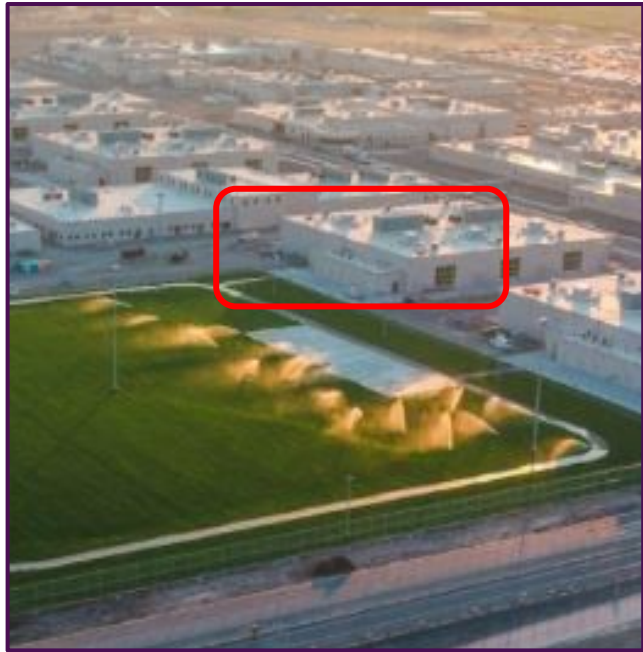
Initial healthcare costs for opening of Bear 3 Housing Unit

\$1,500,000 One-time FY27 General Fund

\$0 Ongoing General Fund



Lessons Learned: Bear 2



- Opened November 2023
- Months ahead of projected schedule
- CHS staff covered shifts using overtime and contract nurses
- Staff reassigned from Gunnison prison
- Major driver of FY24 budget deficit

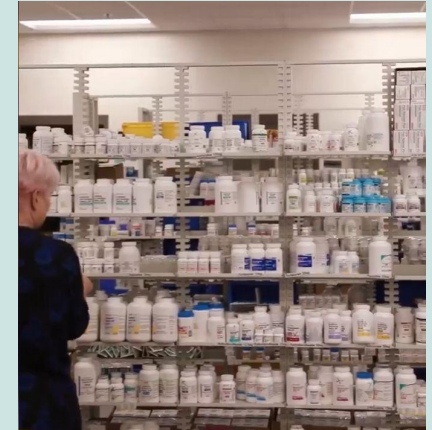
Impact on Utah's inmate population



On-site medical care includes:

- Daily medication administration
- Dental treatments
- Mental health treatments
- Medical appointments
- Triage of Healthcare Requests (HCRs)
- Emergency response

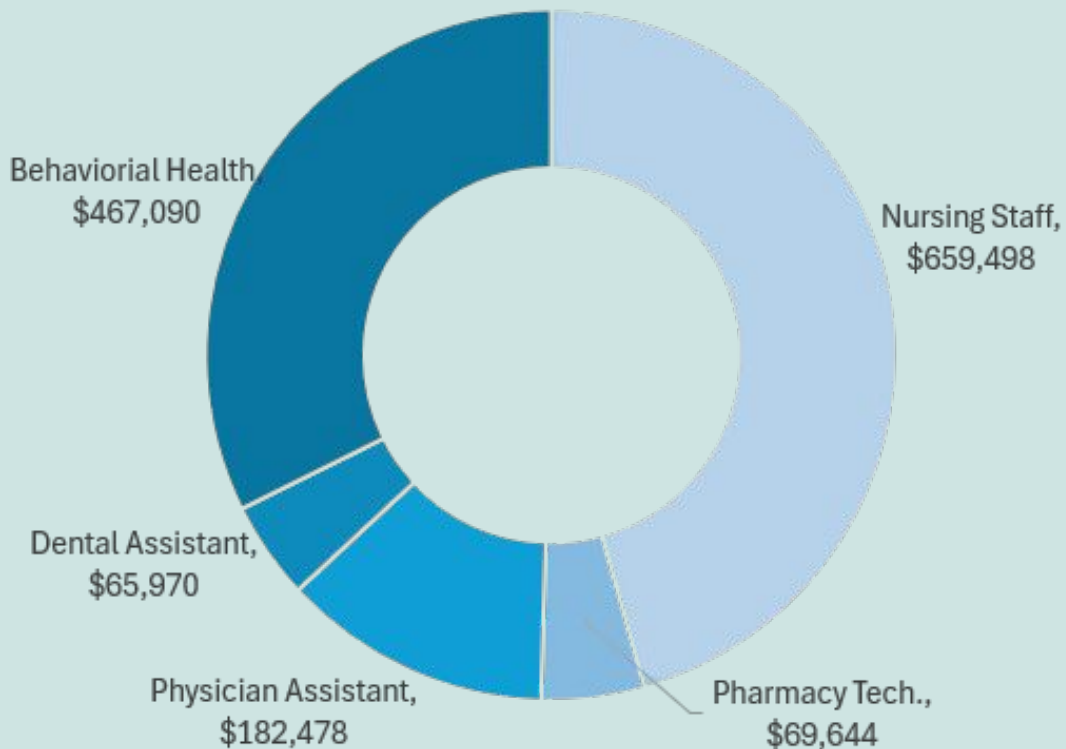
On-site medical care needed to prevent **severe delays** in essential services and avoid increased risk of adverse health outcomes.



Bear 3: Phase 1 (50% Capacity)



Cost Distribution



- **Target Patient Population:**
The expansion provides dedicated healthcare access for 192 patients.
- **Strategic Implementation:**
A phased activation model will be used for safety, fiscal responsibility, and a stable transition of care teams.

