

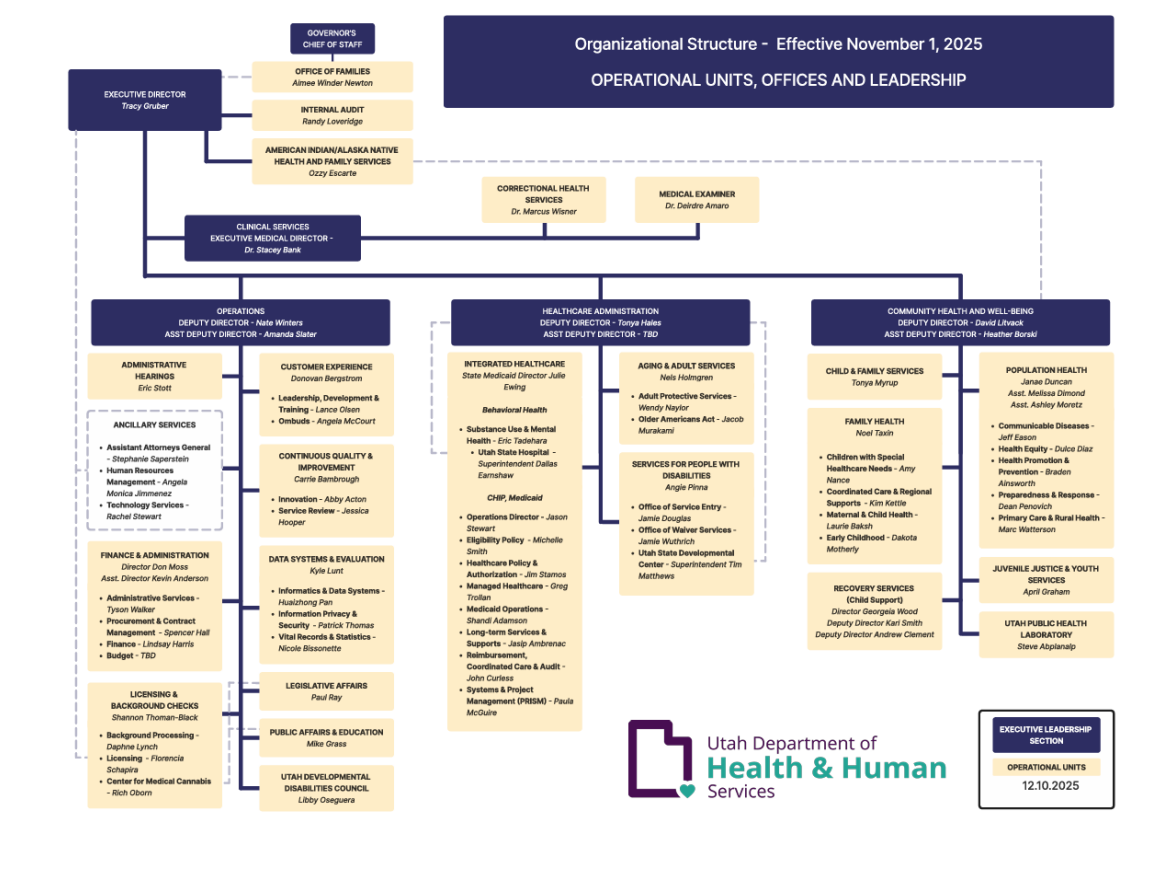


DHHS Children, Youth, and Families

1.26.2026 | Kevin Edminster, Fiscal Analyst, LFA

CYF Base Budget Overview

Org Chart for DHHS





Budget FY27

Funding: The Children, Youth, and Families COBI page can be found here: [Children, Youth, and Families](#)

The Children, Youth, and Families Line Item is appropriated \$391.6 m in the Social Services Base Bill ([H.B. 7](#)) Of the total \$391.6 m, the General Fund provides \$217.2 m (about 55.5%), Federal Funds contribute \$163.8 m (about 41.8%), Dedicated Credits account for \$10.5 m (about 2.7%), and the Income Tax Fund provides \$173,600 (about 0.04%).

This is a 4.7% decrease from the FY26 Revised Appropriation. This is due to reductions in the General Fund of (\$3.5 m) and Dedicated Credits (\$2.0 m).



FY26-27 Sources - \$391.66M



- General Fund (\$217,241,900)
- Income Tax Fund (\$173,600)
- Federal Funds (\$163,764,100)
- Dedicated Credits (\$10,479,500)



Programs



- Child & Family Services (\$123,772,100)
- Domestic Violence (\$15,951,700)
- In-Home Services (\$4,600,000)
- Out-of-Home Services (\$47,357,400)
- Adoption Assistance (\$25,604,200)
- Child Abuse Prevention and Facility Services (\$9,391,900)
- Children with Special Healthcare Needs (\$10,745,300)
- Maternal & Child Health (\$76,076,900)
- Family Health (\$938,900)
- Office of Coordinated Care and Regional Supports (\$8,014,500)
- DCFS Selected Programs (\$14,038,900)
- Office of Early Childhood (\$40,232,900)
- DCFS Attorney General (\$14,871,000)



Performance Measures:

The performance measures for Children, Youth, and Families can be found here on the [COBI](#) page.

Staff Proposed Reductions

#15 Division of Child and Family Services Staffing Changes

#16 Division of Child and Family Services Foster Care & Kinship Investments

#17 Minors in State Custody amendments

#18 CSS GRANDfamilies Kinship Program

#19 Division of Child and Family Services Building Consolidation

#20 Health and Human Services Legal Costs

Motions:

The motions related to the Children, Youth, and Families Line Item start with the “CP” prefix. The Department can explain these motions, and there is a draft motion on the agenda to take CP1-CP4, CP5-CP10.