



# WSU FY 2027 Capital Development Dedicated Funds Request

STUDENT SERVICES PHASE 2 - NORTH

# Projects Summary

## Student Services MEP\* Phase 2 & Remodel

- ▶ Minor remodel to improve student access to student support resources
- ▶ Update systems and connect to campus groundsource geofields
- ▶ Dedicated funds: \$6,746,800
- ▶ Institutional funds: \$1,200,000

**FY 26 Dedicated Funds Available: \$8,457,700**

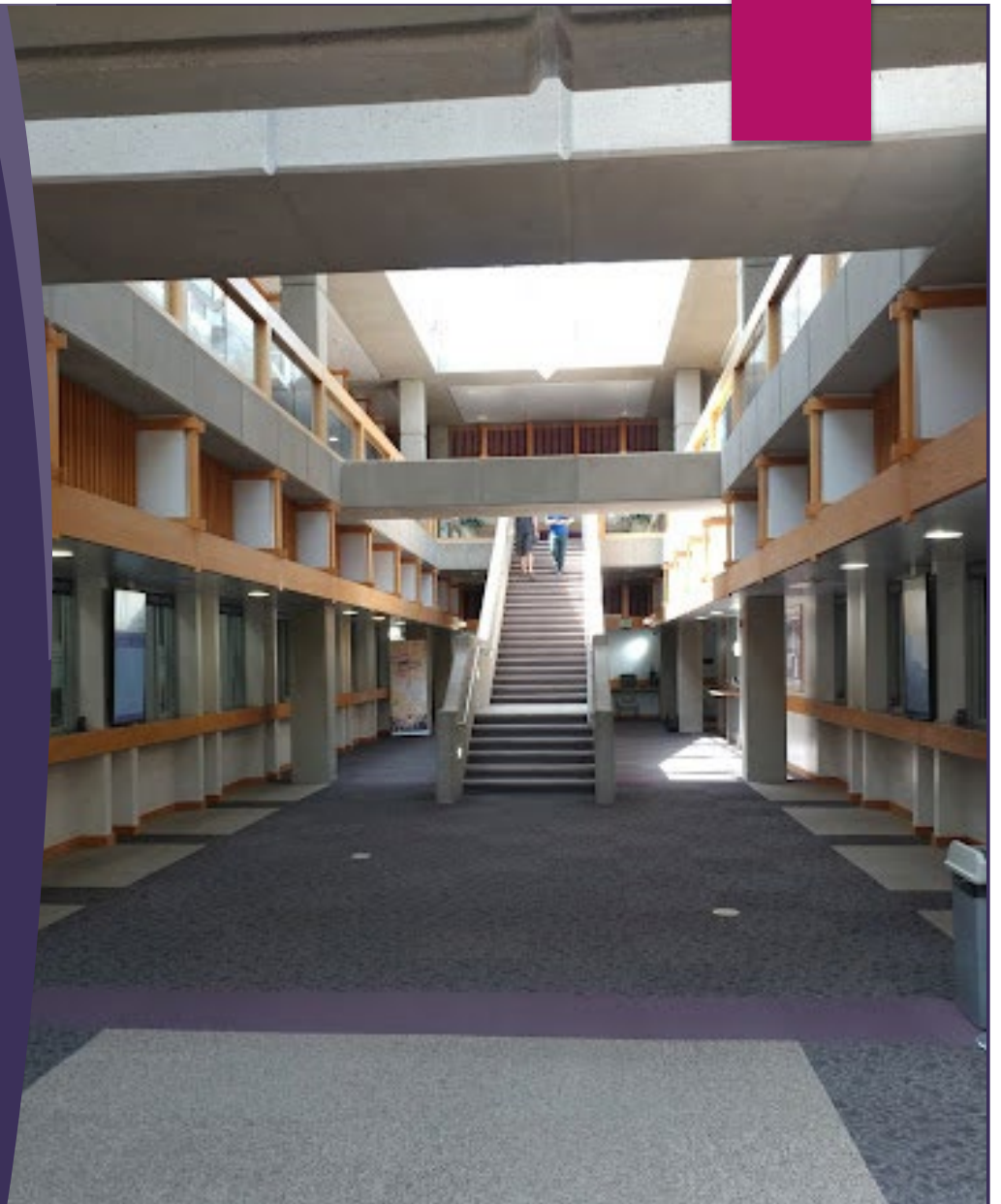
**FY 27 Dedicated Funds Anticipated: 5,194,600**

**Anticipated Total Available: \$13,652,300**

\*MEP – Mechanical, Electrical, and Plumbing

# Student Services Phase 2 Scope

- ▶ Student Services houses all primary student support centers: Registration (Registrar), Cashier's, Financial Aid, Testing Center, Career Services, Graduation, Counseling, Admissions, Transfers, Scholarships, Academic Success, Disability Services
- ▶ South half of the building is currently finishing construction.
- ▶ Update of building systems to provide another 30+ years of useful life and improve building performance.



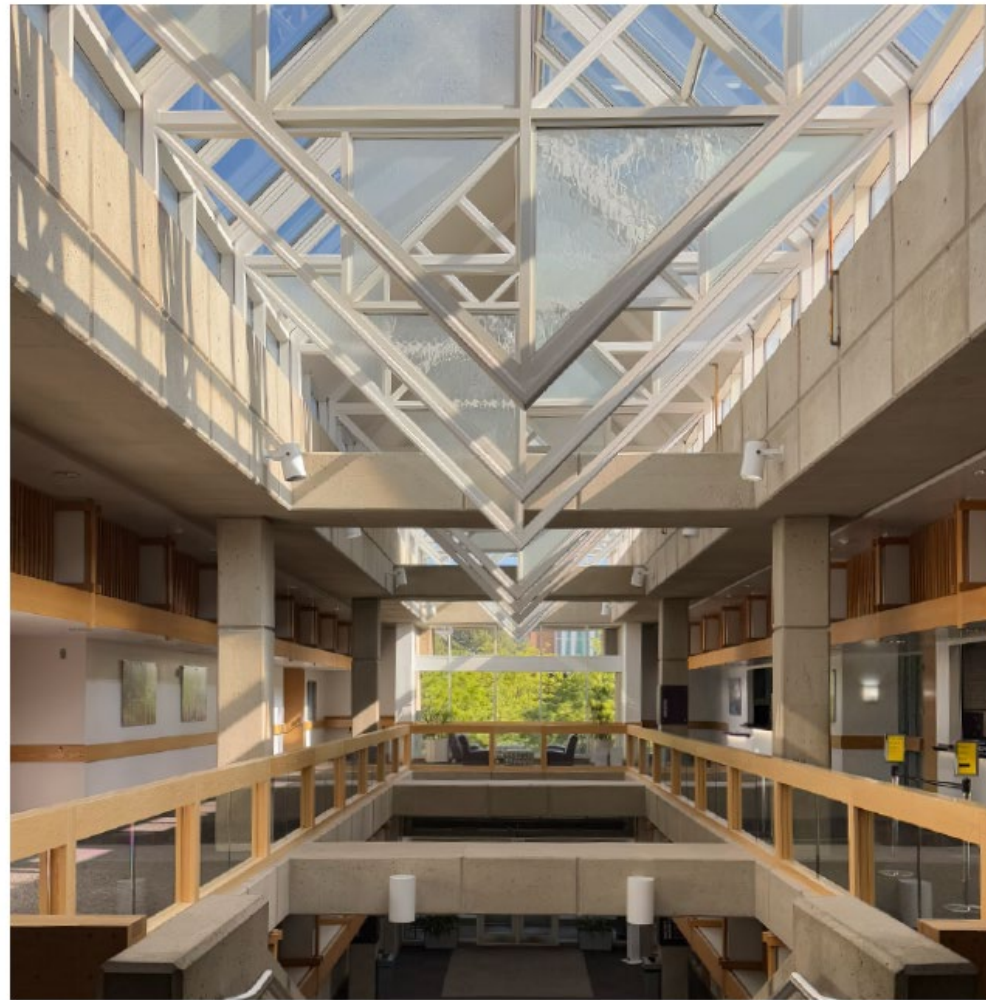
# Student Services MEP

Existing MEP VS proposed NEW  
30 Year old systems



## Student Services Phase 2 Schedule

- ▶ We are currently in design for the phase 2 renovation.
- ▶ Design should be completed by June 2027.
- ▶ Construction is planned to start in January of 2028 and be completed in August of 2028.



WEBER STATE UNIVERSITY

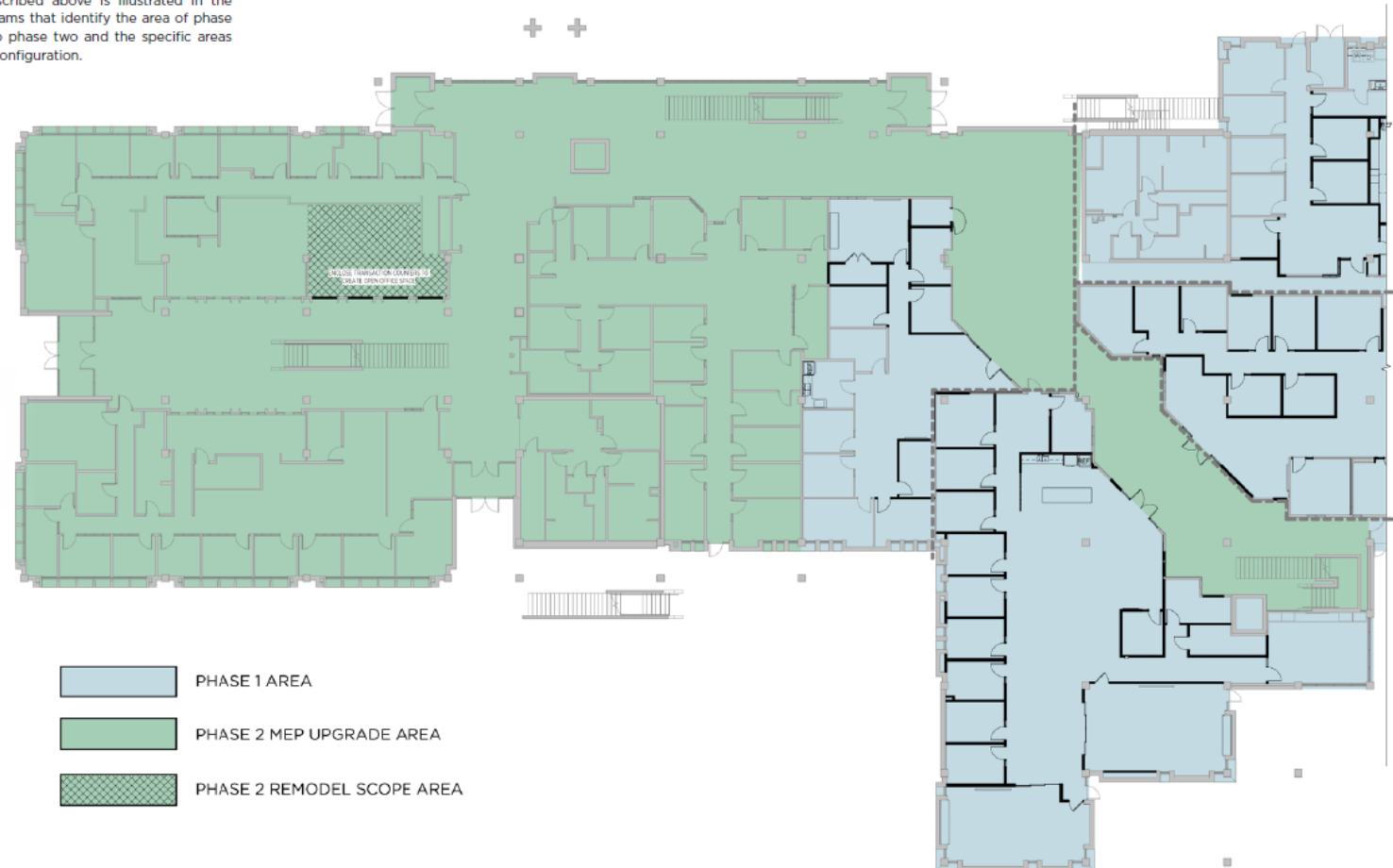
### **STUDENT SERVICE CENTER MEP UPGRADE PHASE 2**

September 23, 2025

A feasibility study for the project has been completed.

#### Scope Diagrams

The scope described above is illustrated in the following diagrams that identify the area of phase one, the area of phase two and the specific areas planned for reconfiguration.

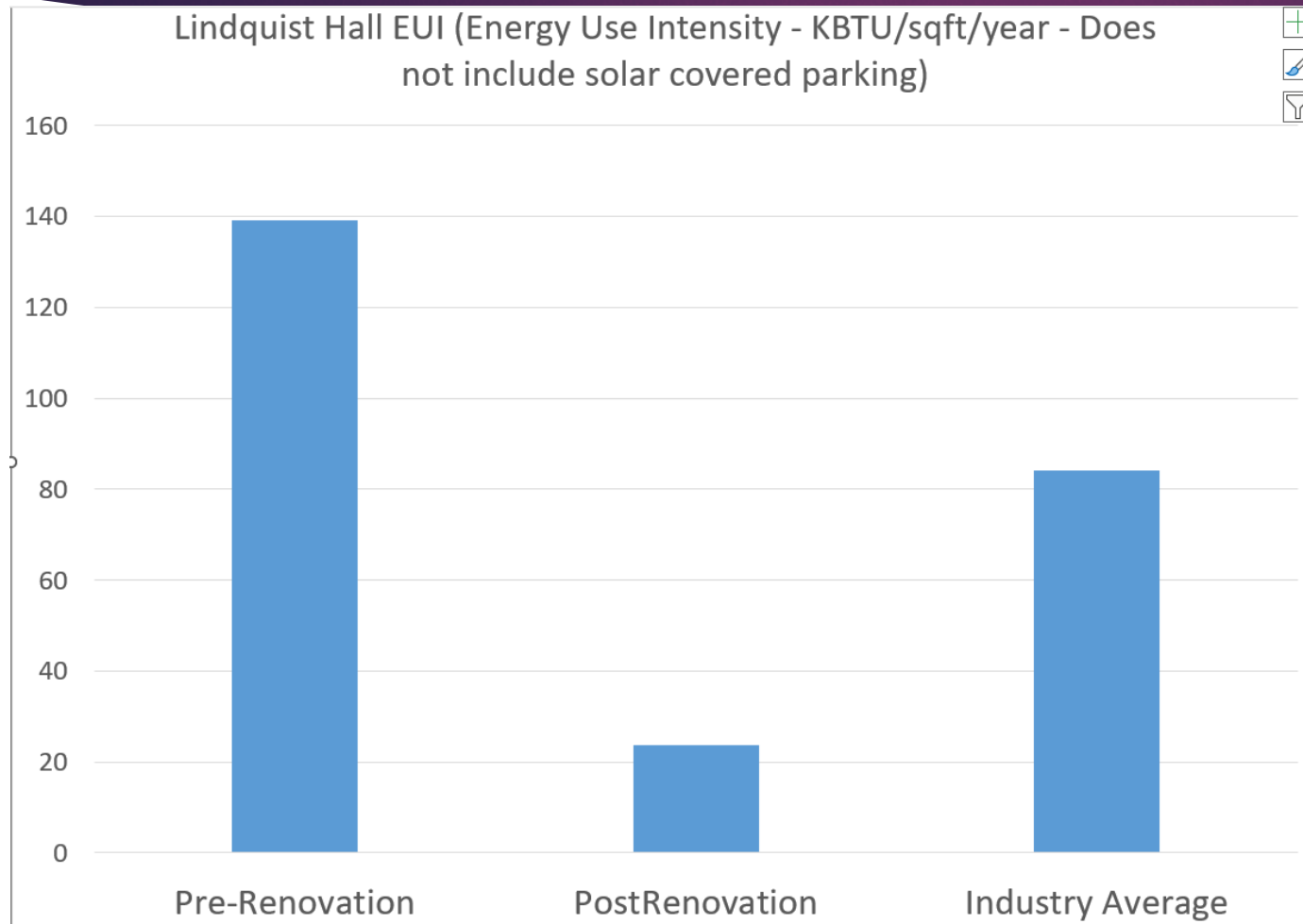


STUDENT SERVICE CENTER - LEVEL 1 MEP SCOPE AREA

# Space Utilization

- ▶ Weber State is not requesting any additional sqft. We are solving space needs by optimizing existing space.
- ▶ Convert classrooms to labs
- ▶ Work with departments and faculty to use 110 classrooms in nearby facilities with lower utilization.

# Building performance



- ▶ WSU has a strong record for high performing buildings
- ▶ This would update buildings to meet DFCM high performance building standards.
- ▶ Project is needed to keep WSU on track to meet energy, climate and air quality objectives.

# Student Success

- ▶ Update of building programming to create academic success center.
- ▶ Focus on creating academic support for all WSU students.

