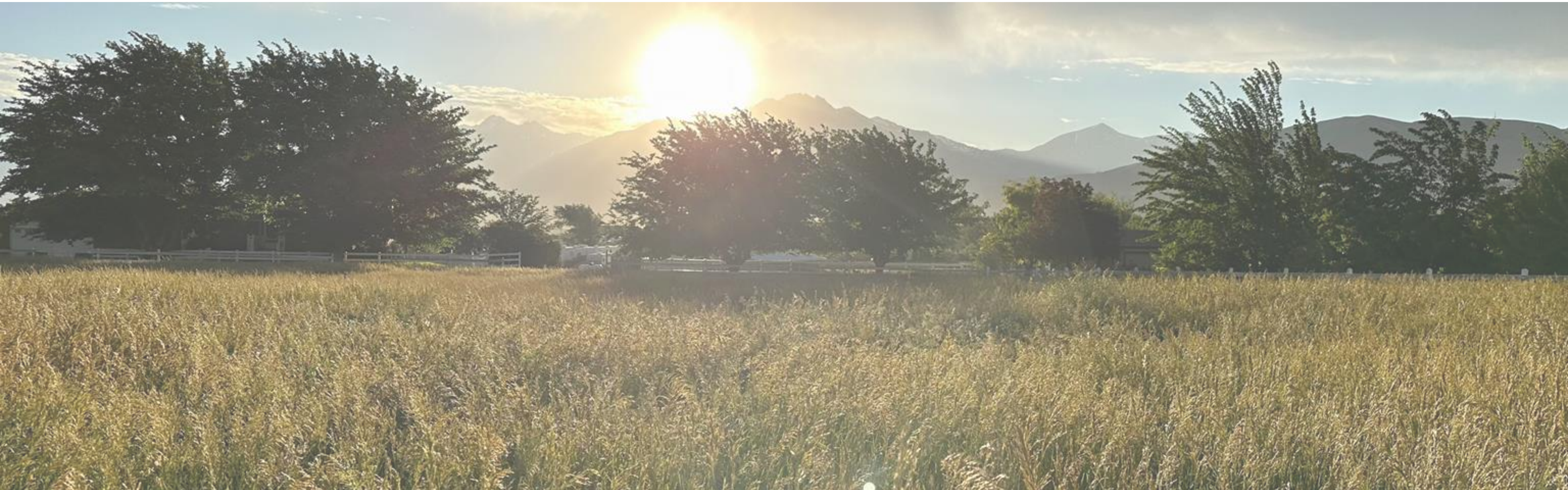


GRIEF & TRAUMA FARM SUPPORT PROGRAM



THE WELLNESS FARM FOUNDATION

GRIEF & TRAUMA IMPACT EVERY UTAH COMMUNITY

Early, connected support
changes outcomes



Car Accidents | Homicide | Cancer | Suicide | SIDS | Drownings | Overdose

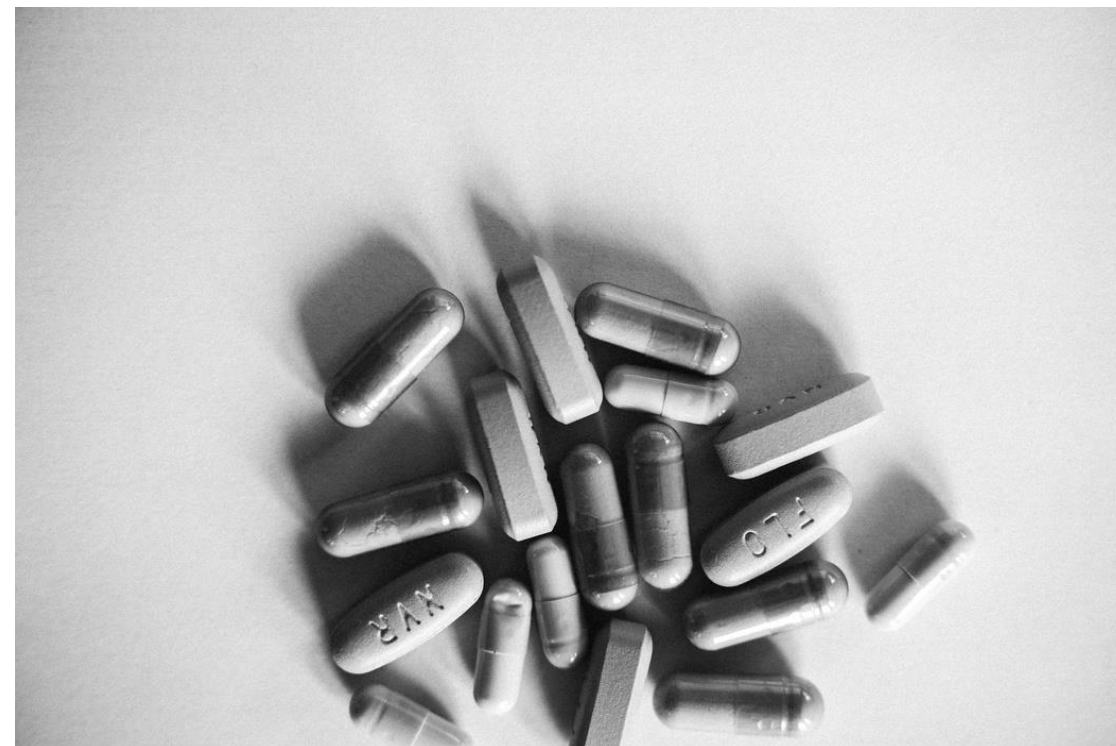
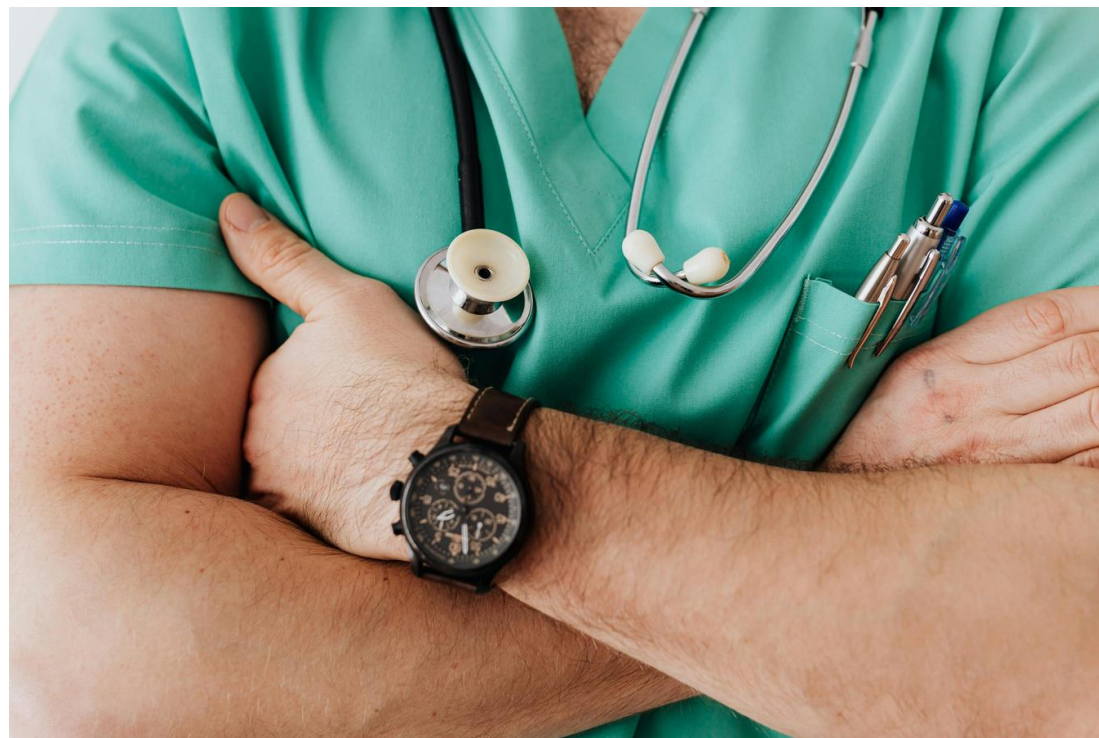
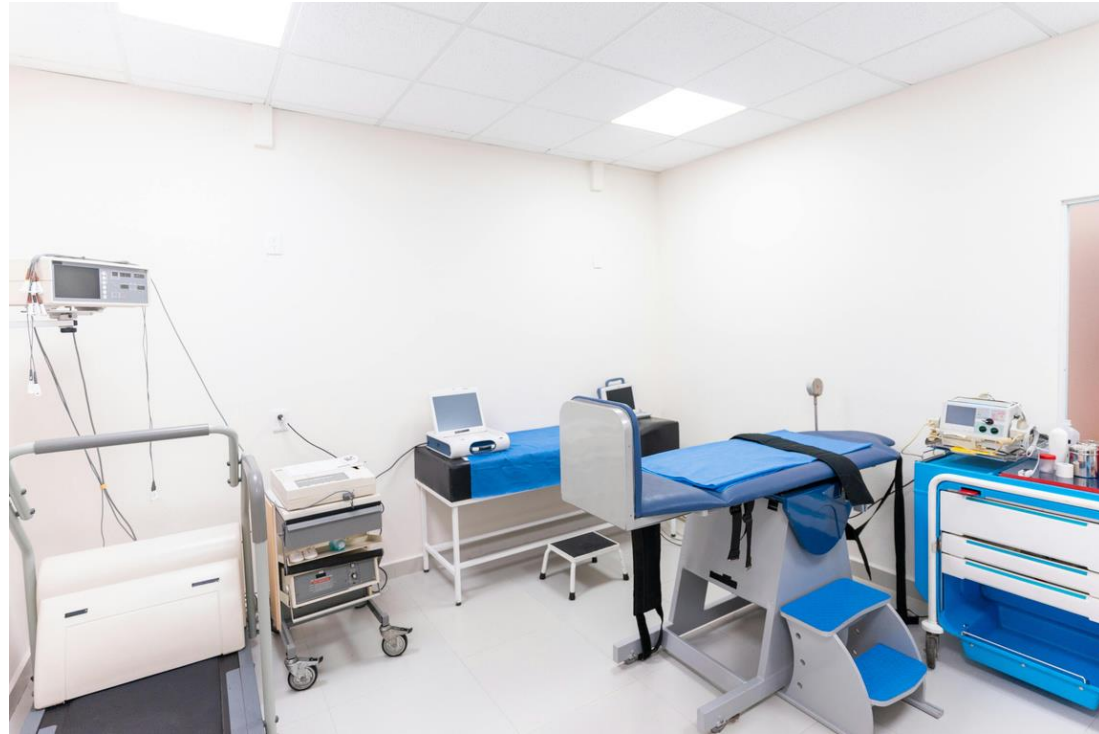
THE PRICE TAG FOR UNRESOLVED GRIEF

- The price tag for unresolved grief amounts to **billions of dollars each year** in lost productivity, lower job performance, and health implications of destructive coping (Ayers et al., 2004).
- The “hidden annual cost of grief in the workplace” related to grief after a loved one’s death is estimated at **\$37.4 billion** (National Hospice and Palliative Care Organization).
- Fox, Cacciatore, and Lacasse (2014) found the cost of child death is **\$3 billion dollars annually**, and with little or no community support grievers fall into a **“downward spiral of destructive coping behaviors”** (Kissane, 2000, p. 46) including substance use (Cacciatore et al, 2014).
- Just the cost of substance abuse treatment alone in 2021 was **\$740 billion** (National Institute for Drug Abuse, 2022), or about \$37,000 per person just for direct treatment, with about a 50% relapse rate.
- We are modeling our program after the Selah Carefarm in Sedona, which has had tremendous success helping grieving people, including **leading them toward more sustainable and healthier lifestyles** (Gorman & Cacciatore, in press; Cacciatore & Gorman, 2020; Gorman & Cacciatore, 2016).

EXPERIENCING A TRAGEDY FEELS LIKE...



HOW DOES THIS FEEL?



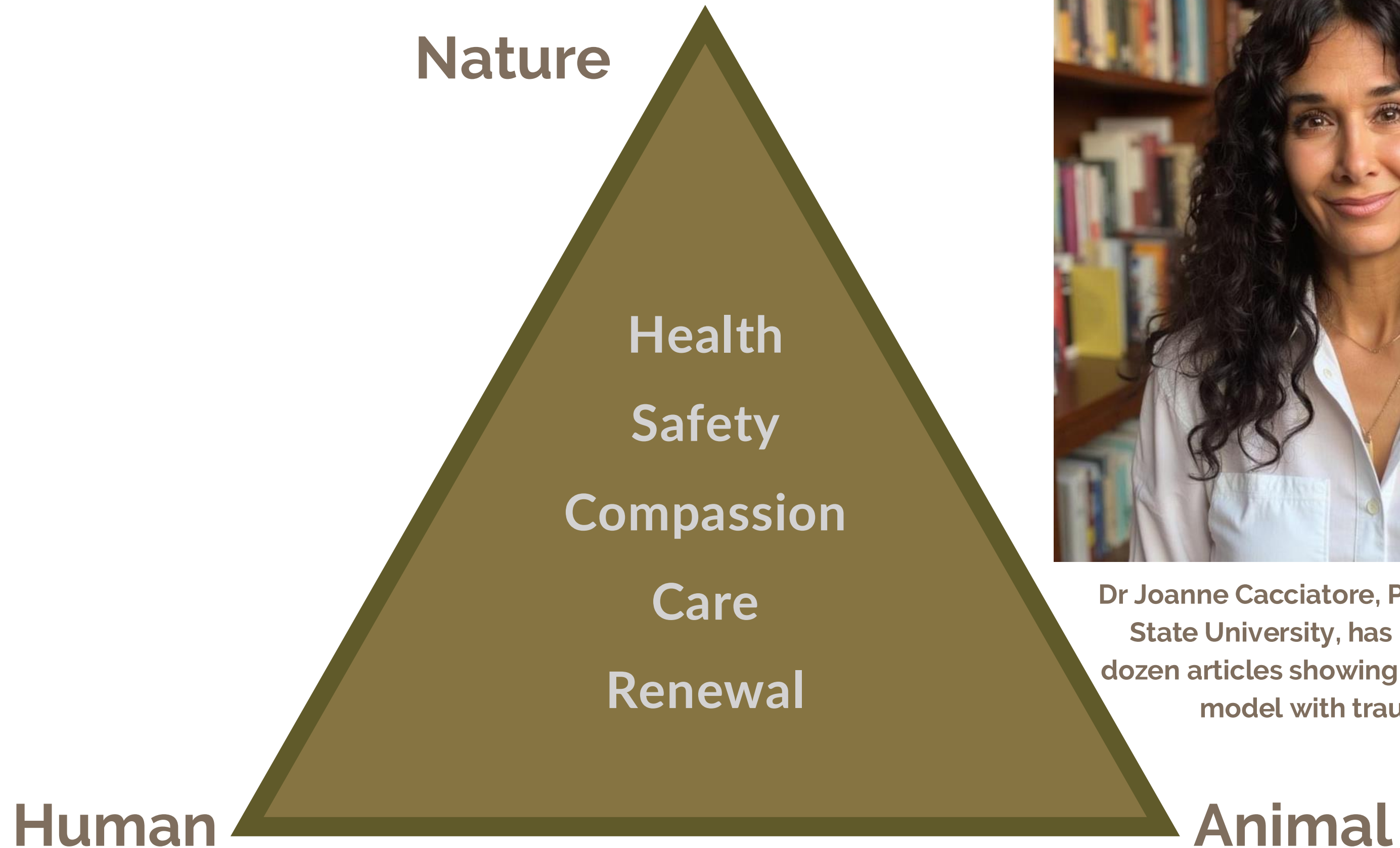
HOW DOES THIS FEEL?



WE ARE THE 3RD TRAUMATIC GRIEF CAREFARM IN THE WORLD



REGENERATIVE HEALTH SOCIAL MODEL (CACCIATORE)



Dr Joanne Cacciatore, Professor at Arizona State University, has published over a dozen articles showing the efficacy of this model with traumatic grief

OUR PROGRAM'S GOALS ARE TO
IMPROVE COMMUNITY MENTAL WELL-
BEING, REDUCE FREQUENT MENTAL
DISTRESS EPISODES, INCLUDING
ANXIETY, DEPRESSION, AND SUICIDE,
AND DECREASE ALCOHOL AND OPIOID
MISUSE.

Preventative, whole-health support reduces long-term costs and strengthens community resilience



SUPPORTING UTAH FAMILIES



Help our
community grieve
well, so we can all
live and love well.

www.wellnessfarmut.org

