

H.B 381:

E-Mobility

Amendments

Sponsor: Representative Cutler



Goals

- **More kids riding bikes**
- More kids riding bikes safely & independently
- Improve safety & reduce injuries/death
- Help parents & riders make better decisions on electric mobility devices
- Ensure consistent, fair application of the law

What is an E-Bike?

- **Current Confusion**
 - High-powered electric motorcycles are being marketed as "e-bikes" to bypass registration
- **Safety Concern**
 - These vehicles often exceed 30-40 mph and are being used on roads
- **Consumer Fraud**
 - Parents may purchase these for thinking they are legal bicycles



Promote Youth Independence

740 ~~[(4) An individual under 16 years old may not operate a class 3 electric assisted bicycle.]~~

741 ~~[(5) An individual under 14 years old may not operate an electric assisted bicycle with the~~

742 ~~electric motor engaged on any public property, highway, path, or sidewalk unless the~~

743 ~~individual is under the direct supervision of the individual's parent or guardian.]~~

High Powered Electric Device

(32)(a) "High power electric device" means a self-propelled vehicle powered by an electric motor that is capable of traveling more than 20 miles per hour on the power of the electric motor alone.

(1) An individual operating a high power electric device, including an electric motorcycle, has all rights and is subject to all provisions of this chapter applicable to an operator of a motorcycle.

(2)(a) A local authority may adopt an ordinance or a state agency may adopt a rule to regulate or restrict the use of a high power electric device on a sidewalk, path, or trail within the jurisdiction of the local authority or state agency.

Local Control

Local's can adopt their own ordinances for electric mobility devices on sidewalks, path's trails, or parks

(3)(a) A local authority or state agency may adopt an ordinance or rule to regulate or restrict the use of an electric assisted bicycle, or a specific classification of an electric assisted bicycle, on a sidewalk, path, or trail within the jurisdiction of the local authority or state agency.

Law Enforcement Challenges

- Riders and parents unaware of the different classifications
- Distinguishing the difference between classifications
- Numerous occurrences of evading
- Damage to trails and parks
- Modifications to e-bikes and e-motorcycle
- Ability to disable the “Pedal Assist System”
- Serious accidents and fatalities

Numerous Occurrences of Evading

 **MOTOROLA SOLUTIONS**

09/12/2025 18:01:30

M500-014150



E-Motorcycle & E-Bike Modifications



**How to
Remove E-Bike
Speed Limiter**



Mobility Devices On a Highway

Device	Capable Max Speed	Supervised Use (Parent or Responsible Adult)	Independent Use With Safety Certificate	Independent Use	Helmet Use
Pedal Assist Bikes: Class 1 Class 3	20 mph 28 mph	8-15 years	8-15 years	16 & Up	Under 21 ⁺
Throttle Devices: Class 2 e-bikes Most e-scooters micro-mobility devices	20 MPH	8-15 years	8-15 years	16 & Up	Under 21 ⁺
Electric Motorcycle	More than 20 MPH	N/A	N/A	16 & Up Driver License + Motorcycle Endorsement	Under 21 [#]
High-Powered Electric Device High power e-scooter Modified e-bike Other high powered micro-mobility devices	More than 20 MPH	N/A	N/A	16 & Up: Driver License*	Under 21 [#]

No policy changes to current insurance law or to off-highway use

*Thurston Amendment

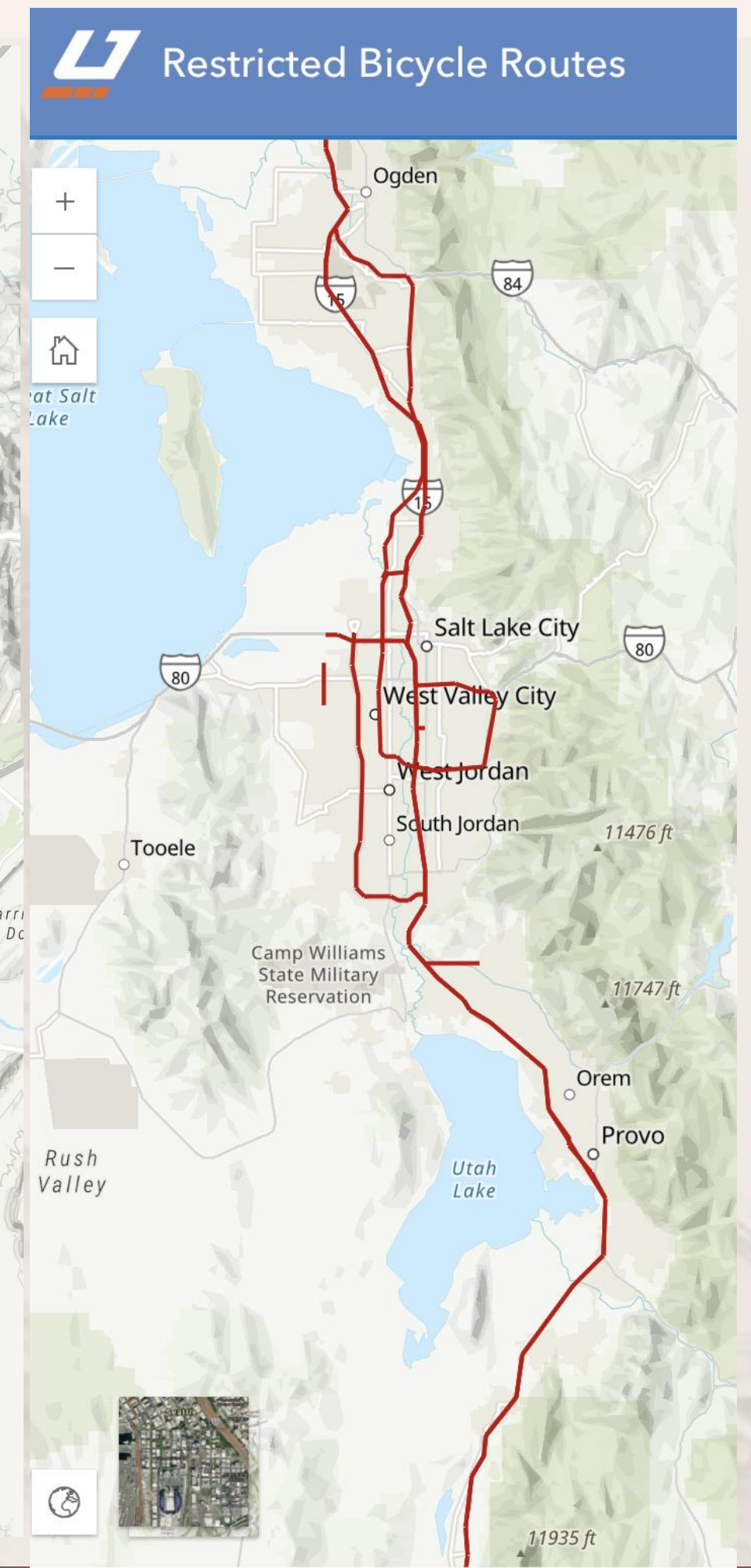
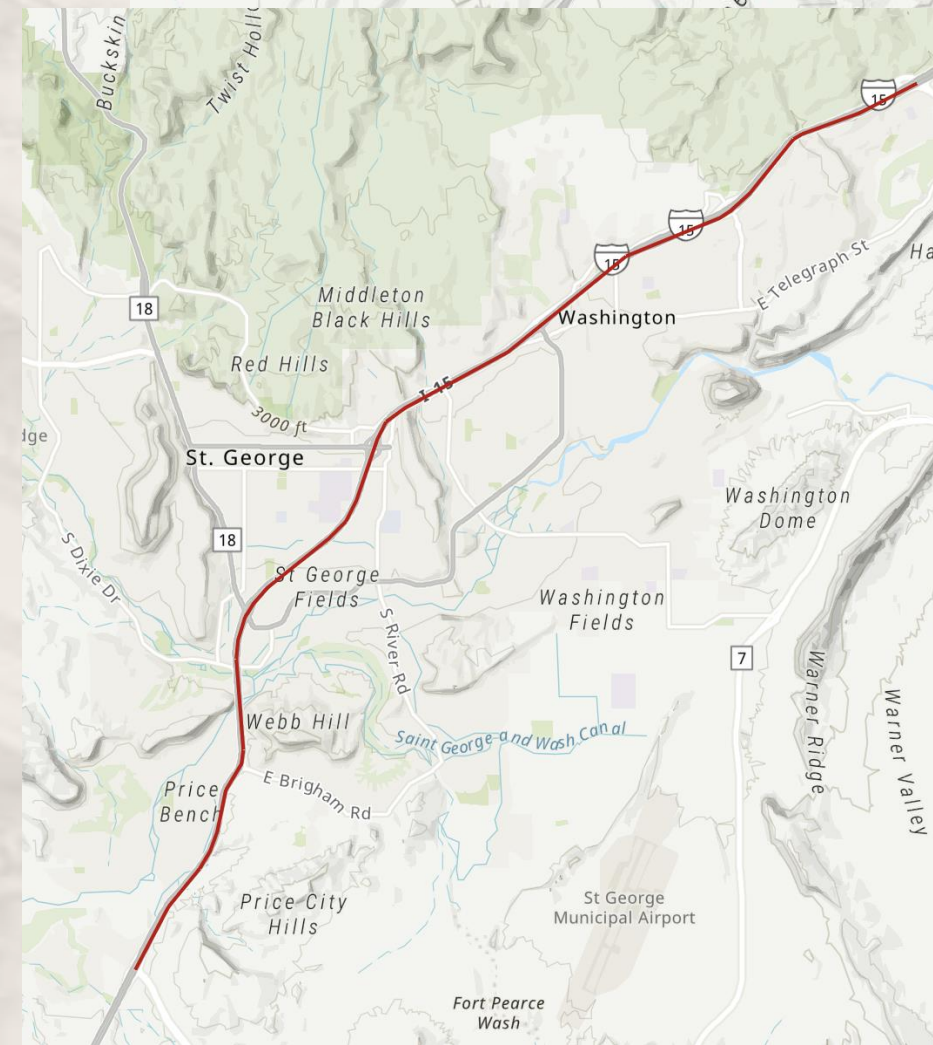
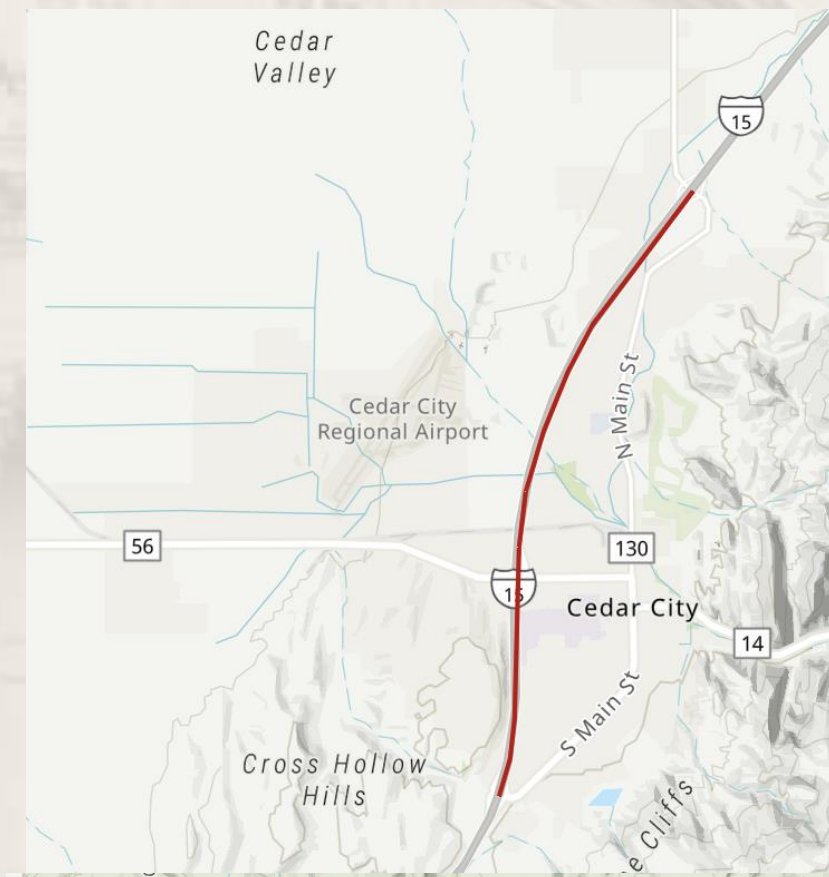
+ \$25 max fine
#Infraction (\$110+)

Does UDOT limit Bikes on Freeways?

Currently UDOT regulates bikes on freeways by rule (not statute) →

Amendment 1

- Clarifies that e-scooters, high powered electric devices are NOT allowed on freeways
- (5) An individual younger than 16 years old may not operate a personal electric vehicle on a freeway.



Utah Laws Applicable to E-Bikes and E-Motorcycle

Motor Assisted Scooter

- self-propelled device
- at least two wheels + brakes
- (A) handlebars and a deck, or
- (B) handlebars and a seat
- No more than 20 MPH



Utah Laws Applicable to E-Bikes and E-Motorcycle

Class 1 E-Bike

- Pedal assist only
- No more than 20 MPH
- No throttle
- Restricted under 8y



Utah Laws Applicable to E-Bikes and E-Motorcycle

Class 2 E-Bike

- Throttle assisted
- No need to pedal
- No more than 20 MPH
- Restricted under 8y



Utah Laws Applicable to E-Bikes and E-Motorcycle

Class 3 E-Bike

- Pedal assist only
- No more than 28 MPH
- 16+ to operate today



Utah Laws Applicable to E-Bikes and E-Motorcycle

E-Motorcycle

- Not an e-bike
- Power 750W+
- Often Not street legal
- Sur-Ron most common

