

POST TRAINING FACILITY

Utah Department of Public Safety



**Department of
Public Safety**

Peace Officer
Standards *and* Training

Current Overcapacity

The existing POST facility is operating significantly over its designed capacity, currently graduating over 550 Law Enforcement Officers (LEO) and Correction cadets annually.



**Department of
Public Safety**

Growth in Utah

- **Over the next 40 years, Utah could add nearly 2 million residents, bringing its total population up to 5.6 million.**
- **By 2066, POST estimates the annual demand for LEO and Correction cadets will double to 1,000.**



Graduating Cadet Classes

Year	#Cadets Enrolled
2016	259
2017	292
2018	360
2019	345
2020	397

Year	# Cadets Enrolled
2021	376
2022	395
2023	518
2024	508
2025	576



EVO Training Facility

- **The POST Emergency Vehicle Operations (EVO) range is the only training facility of its kind in the entire state.**
- **Every LEO in the state is required to complete EVO training for risk management. Significant backlogs are occurring.**



Department of Public Safety Training Campus



Mission: The Public Safety Campus is designed to be a premier multidisciplinary hub that promotes resource sharing among state and local agencies and features advanced educational environments.

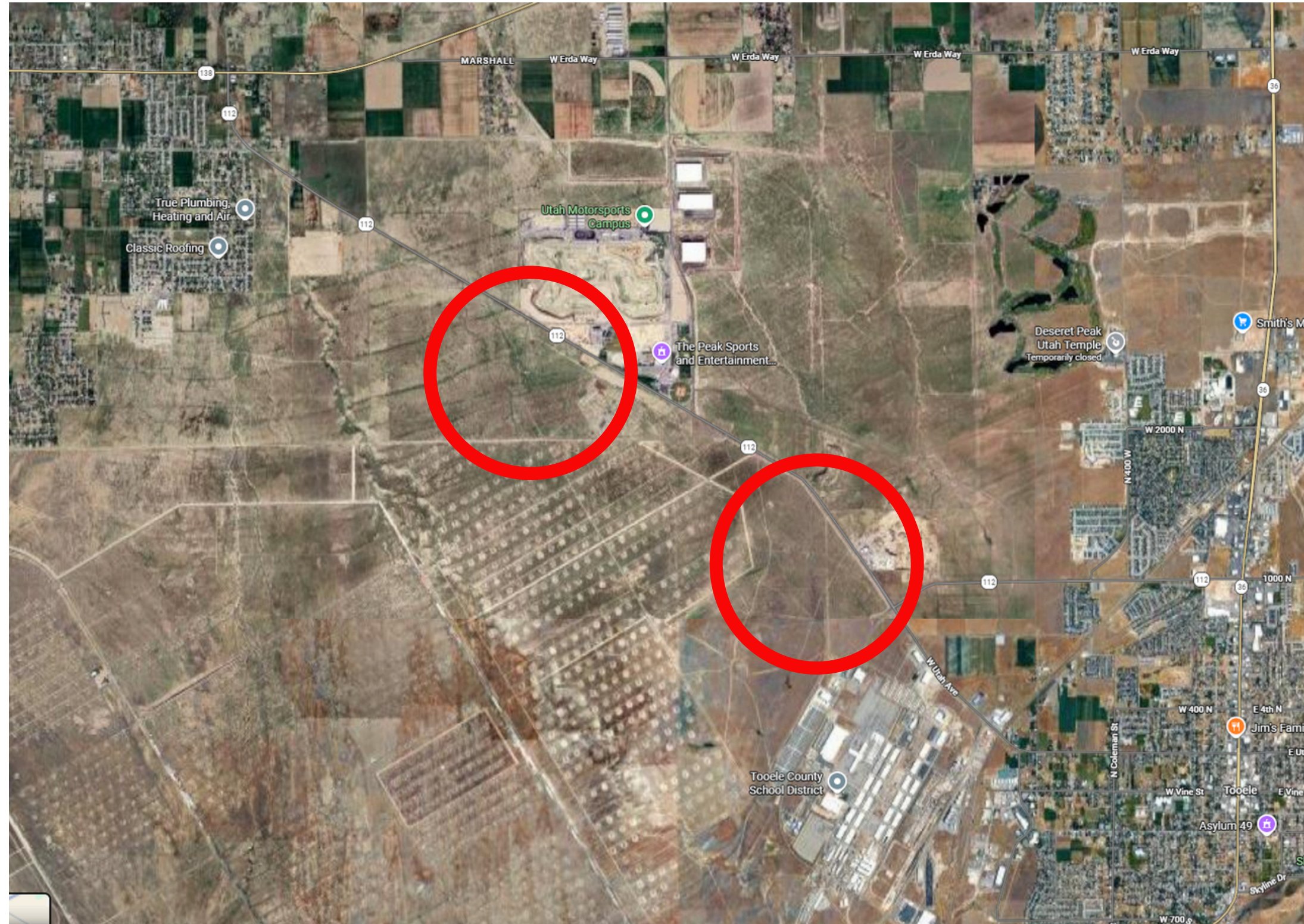


Strategic Expansion to Meet Growing Needs

- **Our current facility cannot support the volume of modern law enforcement training.**
- **The proposed campus spans 420 acres adjacent to the North Toole Army Depot.**
 - **Including built space & outdoor training areas.**



Location

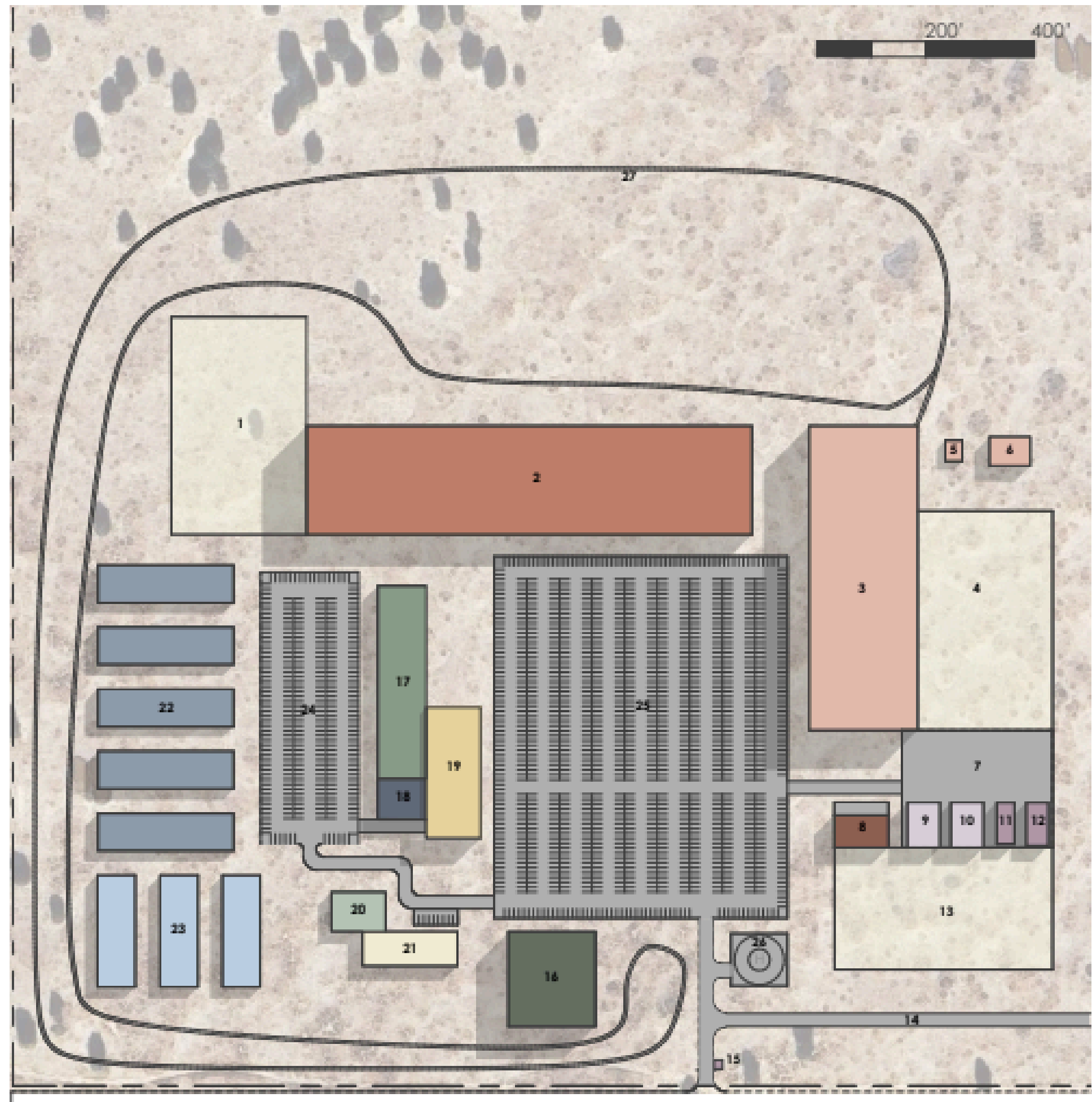


Adjacent to the North Toole Army Depot



**Department of
Public Safety**

- 1 POST - OUTDOOR TRAINING
- 2 POST - TRAINING
- 3 UHP - TRAINING
- 4 UHP - OUTDOOR TRAINING
- 5 GAS HOUSE
- 6 SHOOT HOUSE
- 7 SECURE PADDOCK
- 8 K9 TRAINING
- 9 UHP - VEHICLE STORAGE
- 10 UHP - SPECIAL OPS WAREHOUSE
- 11 POST - STORAGE WAREHOUSE
- 12 POST - VEHICLE STORAGE
- 13 K9 - OUTDOOR
- 14 ACCESS ROAD
- 15 SECURE ACCESS POINT 1
- 16 AUDITORIUM
- 17 POST - EDUCATION
- 18 CAFETERIA
- 19 POST - ADMIN
- 20 UHP - EDUCATION
- 21 UHP - ADMIN
- 22 POST - DORMITORIES (300 CADETS)
- 23 UHP - DORMITORIES (150 CADETS)
- 24 DORM PARKING (300)
- 25 OVERALL PARKING (1200)
- 26 HELIPAD
- 27 RUNNING PATH



TEST FIT - 1

1 - DRIVING RANGE, SHOOTING RANGES, AND INFASTRUCTURE TO SUPPORT

2 - POST CAMPUS, DORMITORY BUILDINGS, INFASTRUCTURE TO SUPPORT, AND CONNECT CENTRAL ACCESS ROAD

3 - TRAINING FACILITIES INCLUDING RANGES, MOCK BLOCK, GAS HOUSE, AND SHOOHOUSE

4 - UHP CAMPUS, DORMITORY BUILDING, AND INFASTRUCTURE TO SUPPORT

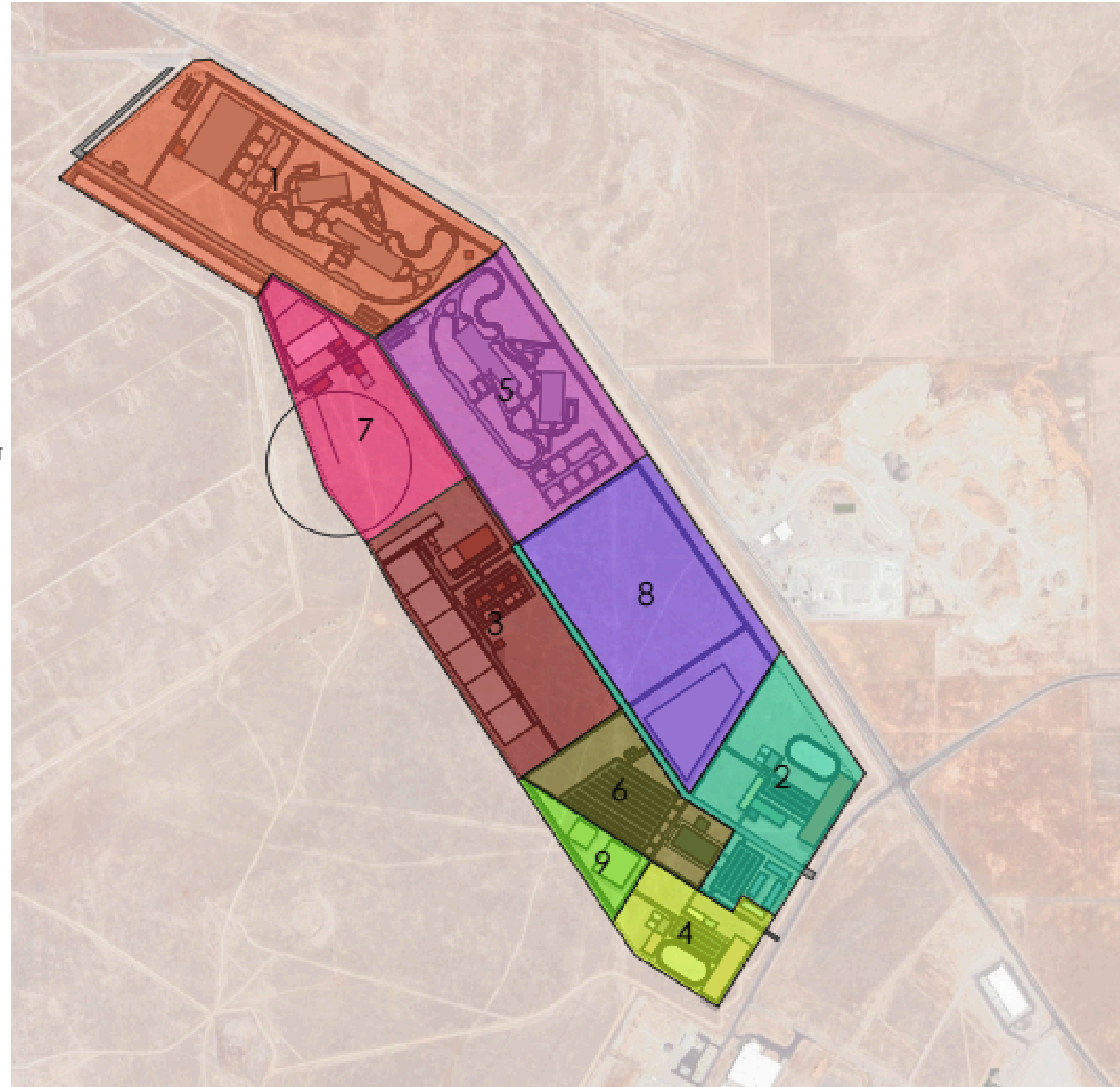
5 - SECOND DRIVING RANGE, TRACK CLASSROOMS, AND INFASTRUCTURE TO SUPPORT

6 - AUDITORIUM, LARGE PARKING LOT, HELIPAD, AND INFASTRUCTURE TO SUPPORT

7 - SPECIALITIES AREA CAMPUS INCLUDING K9, DIVE, AND BOMB TECH

8 - FUTURE CAMPUSES DNR

9 - , UDC, ETC.



PHASING

Phased Approach

- **Phased Rollout:** To make the project scalable, the construction is broken into 9 phases.
- **Initial Phase:** Phase 1 requires approximately \$37.1 million to get the driving and shooting facilities immediately operational.
- **Future Growth:** Later phases account for expanding the campus to include partner agencies, including DNR and UDC campuses.



Key Facilities Include



- **Dormitories for over 550 occupants**
 - 300 POST
 - 150 UHP cadets
 - 100 in-service
- **Shared educational space** featuring an auditorium
- **Two Emergency Vehicle Operations (EVO) courses** to train cadets and active LEO's
- **Outdoor shooting ranges**
- **Modernized training areas**, which could include a mock city, Dive Team pool, Bomb Tech live detonation zone, and a K9 facility

Questions



**Department of
Public Safety**

Peace Officer
Standards *and* Training