

May 21, 2026

Legislative Water Development Commission

Water Supply

Laura Haskell | Engineer
Division of Water Resources

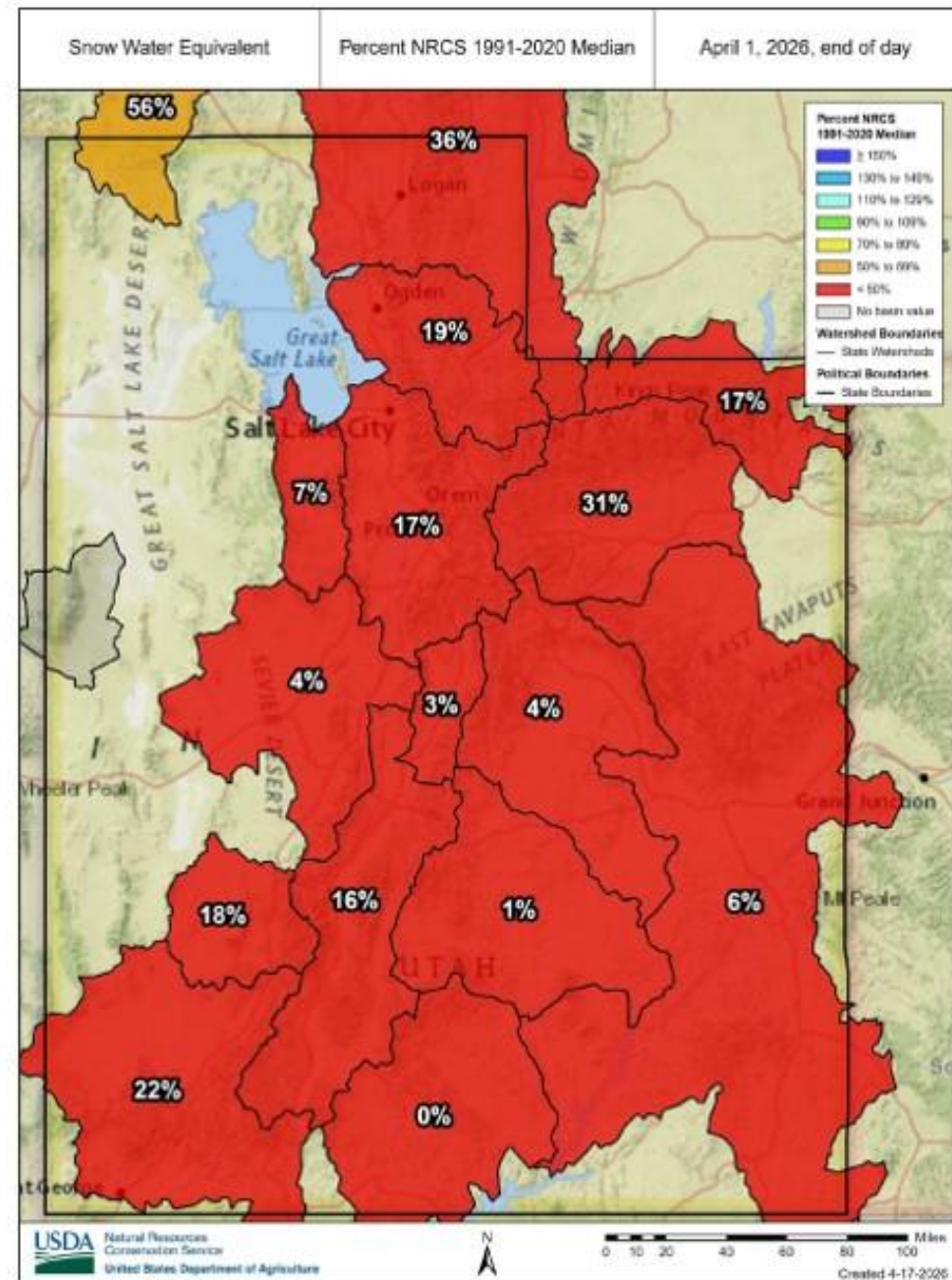


Utah Division of Water Resources

water.utah.gov

April 1 Snowpack

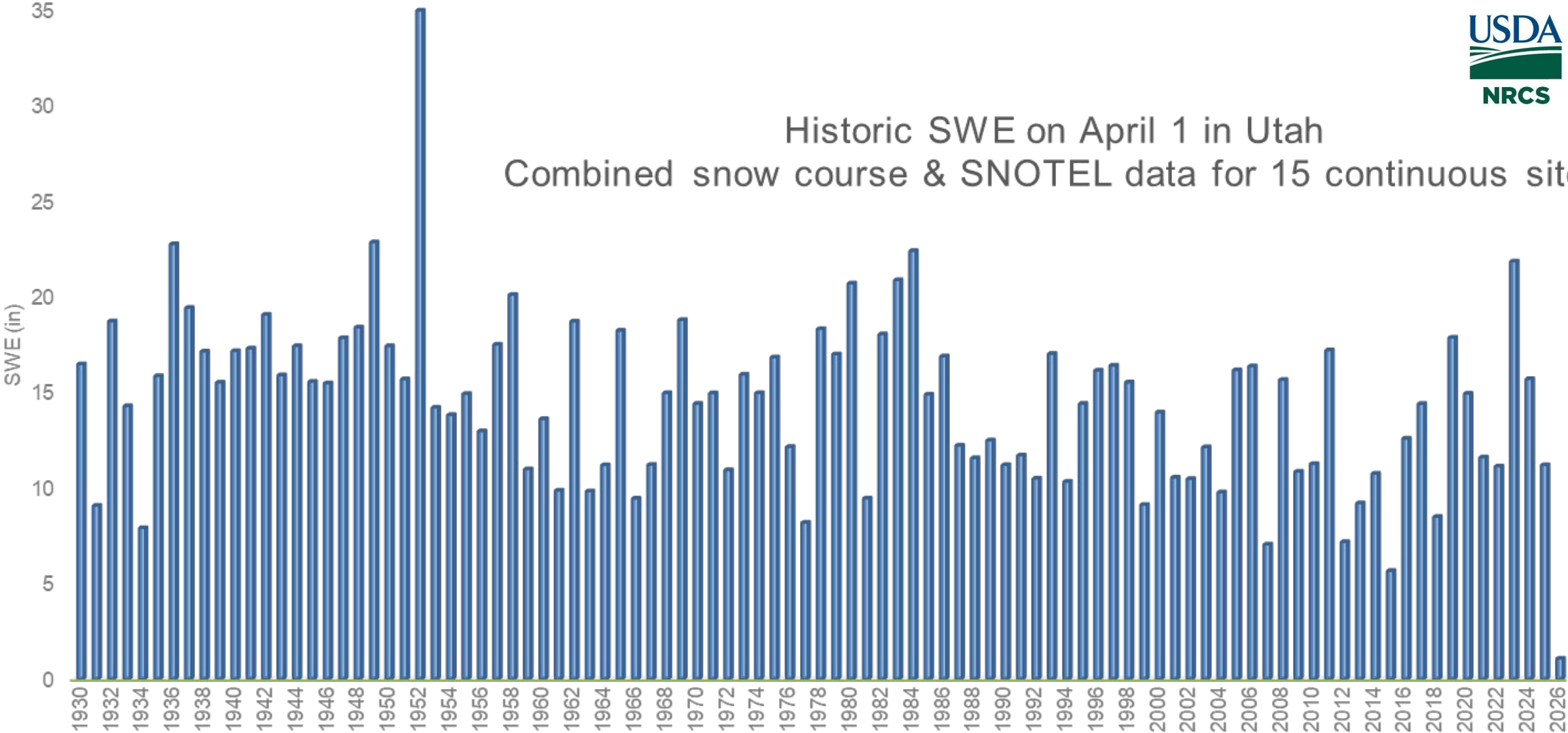
- Peaked over 3 weeks early
- Peak was 8.4 inches
- Typical peak is 16.0 inches
- Snowpack is about 95% of yearly supply



April 1 Snowpack



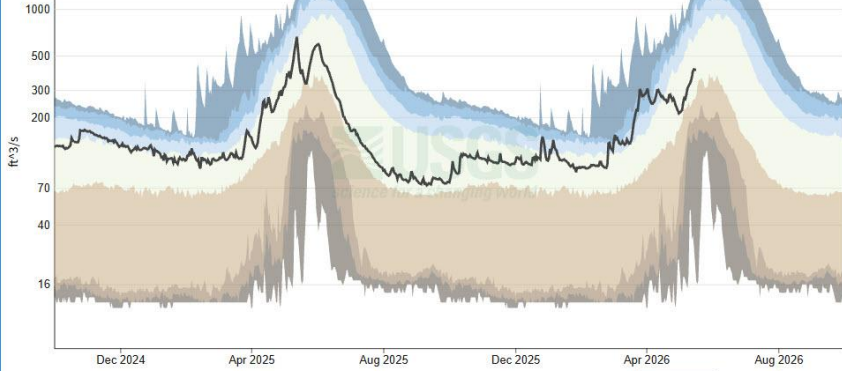
Historic SWE on April 1 in Utah
Combined snow course & SNOTEL data for 15 continuous sites



October 1, 2024 - September 30, 2026

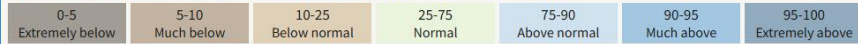
Discharge, cubic feet per second

Logan River



— Daily average (mean) for Discharge, cubic feet per second

Percentile ranges for daily averages (means) for each day of a year (with comparison to normal)



IMPORTANT Data may be [provisional](#)

[Hide legend](#)

Streamflow

Streamflow: Status

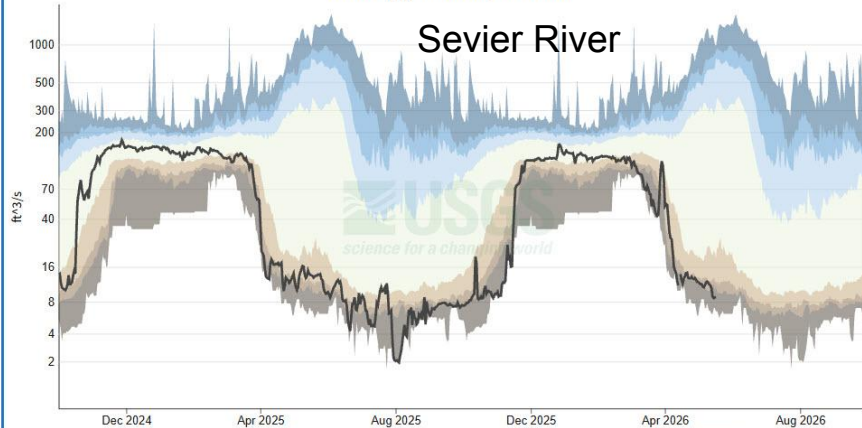
- Above flood stage
 - All-time high for this day
 - Much above normal
 - Above normal
 - Normal
 - Below normal
 - Much below normal
 - All-time low for this day
 - Not flowing
 - Not ranked
 - Measurement flag
 - Recent measurement unavailable
- 100th percentile (maximum)
 - >90th percentile
 - 76th - 90th percentile
 - 25th - 75th percentile
 - 10th - 24th percentile
 - <10th percentile
 - 0th percentile (minimum)

Sevier River Near Kingston, UT - USGS-10183500

October 1, 2024 - September 30, 2026

Discharge, cubic feet per second

Sevier River



— Daily average (mean) for Discharge, cubic feet per second

Percentile ranges for daily averages (means) for each day of a year (with comparison to normal)



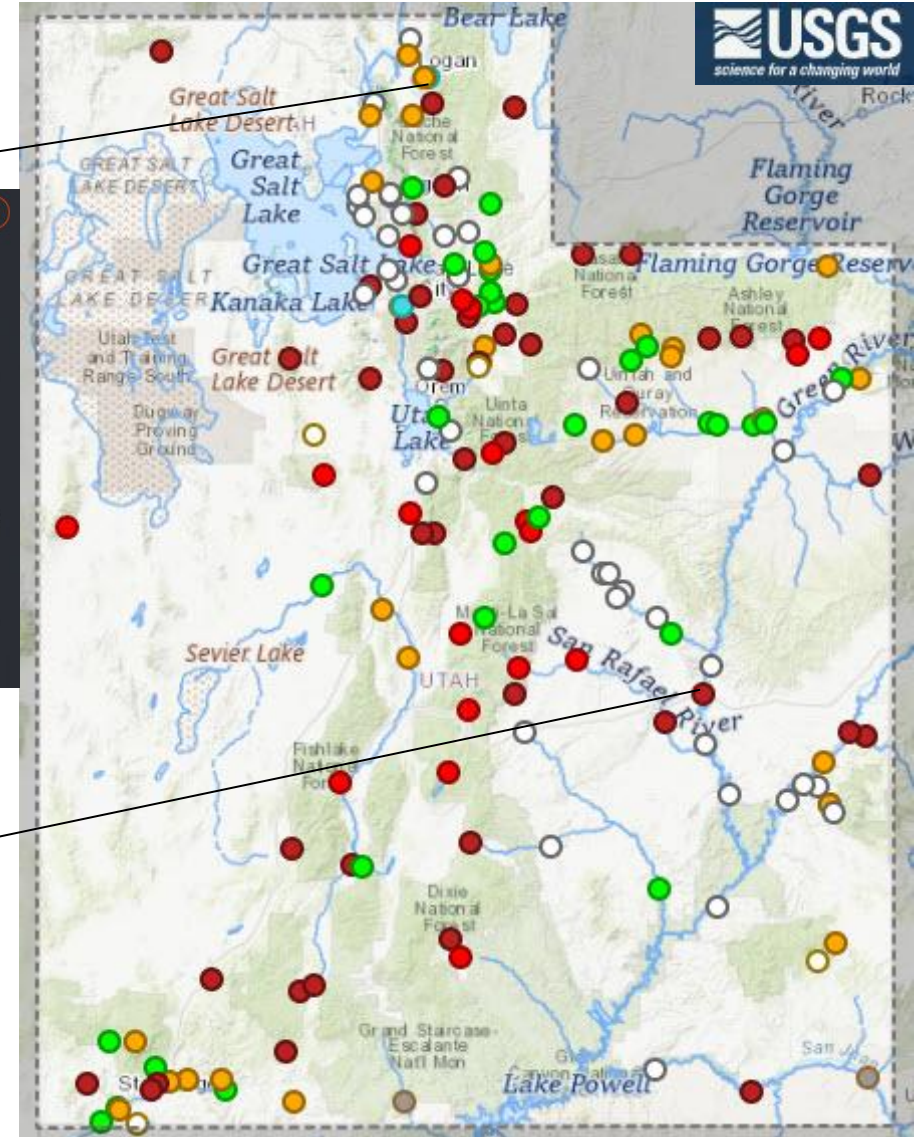
IMPORTANT Data may be [provisional](#)

[Hide legend](#)

[View statistics documentation](#)

[View related statistics](#)

[Hide legend](#)

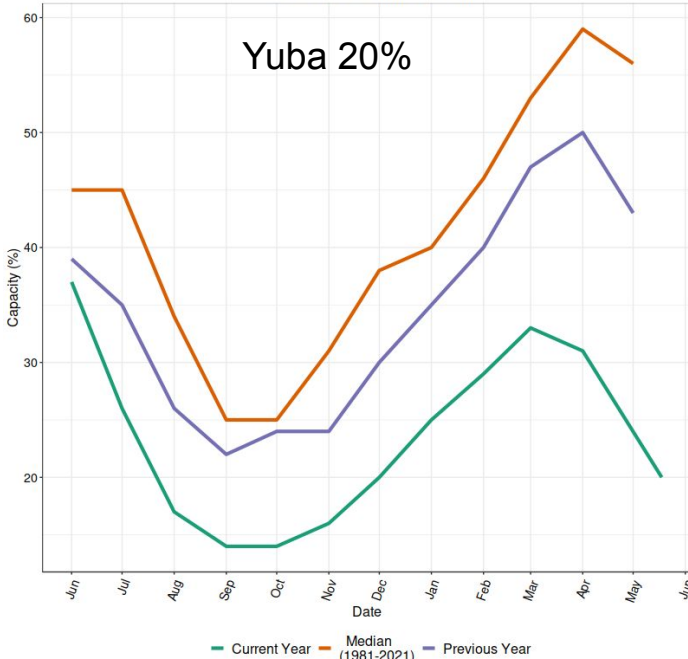


May 20, 2026

Statewide Reservoirs

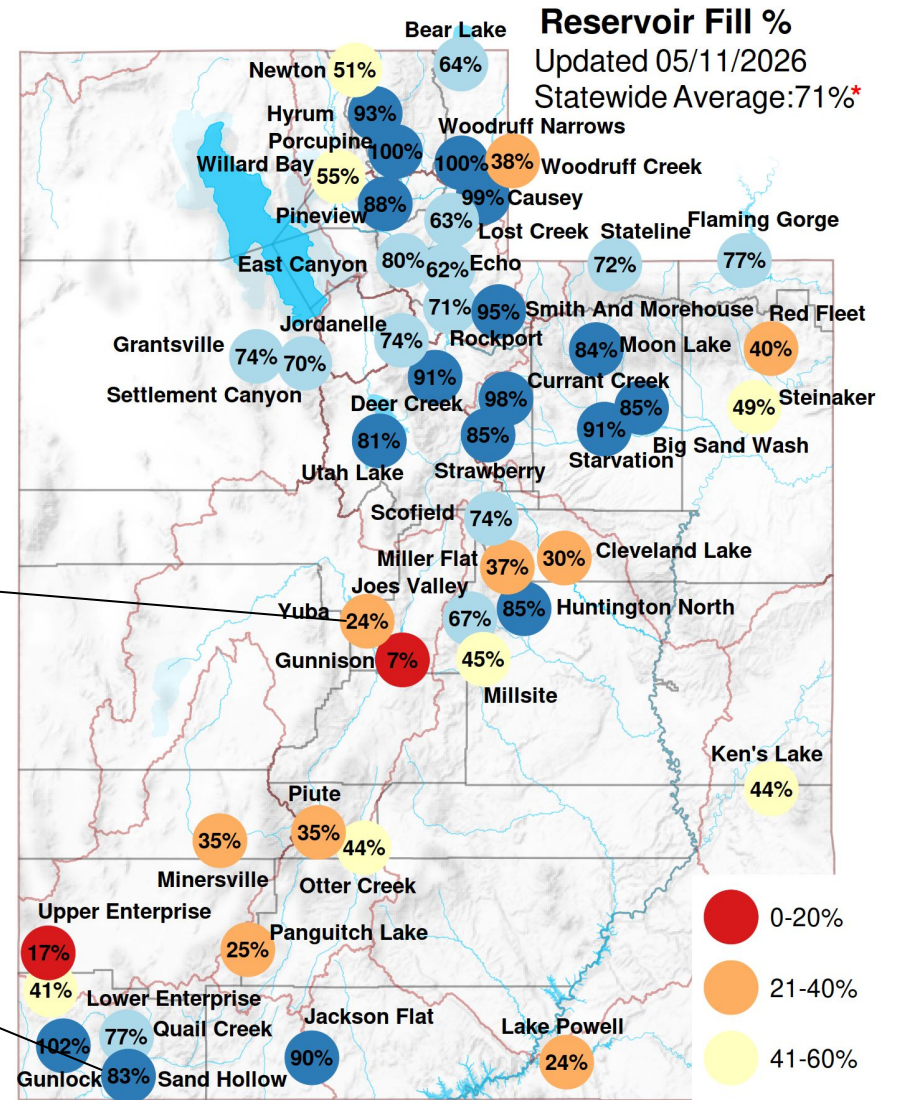
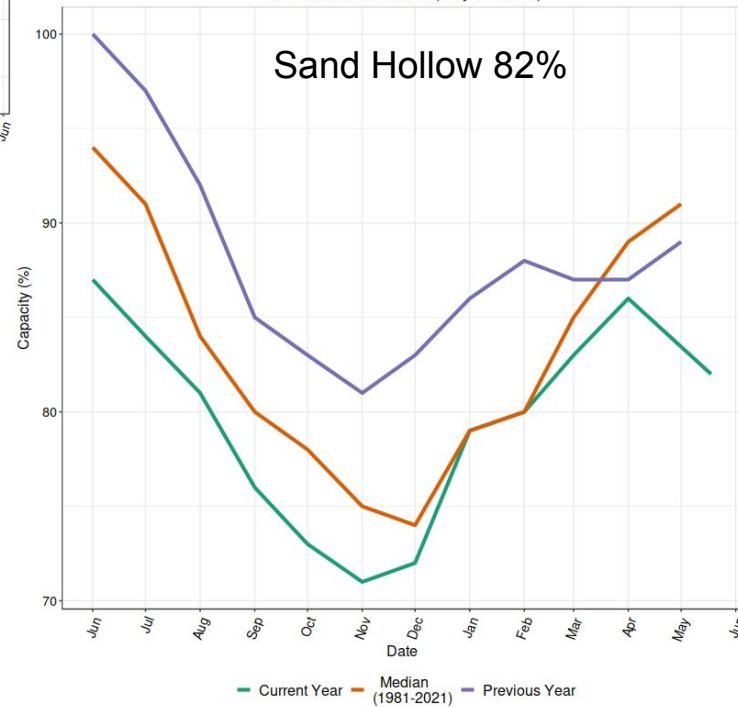
Yuba Reservoir (May-18-2026)

Yuba 20%



Sand Hollow Reservoir (May-18-2026)

Sand Hollow 82%



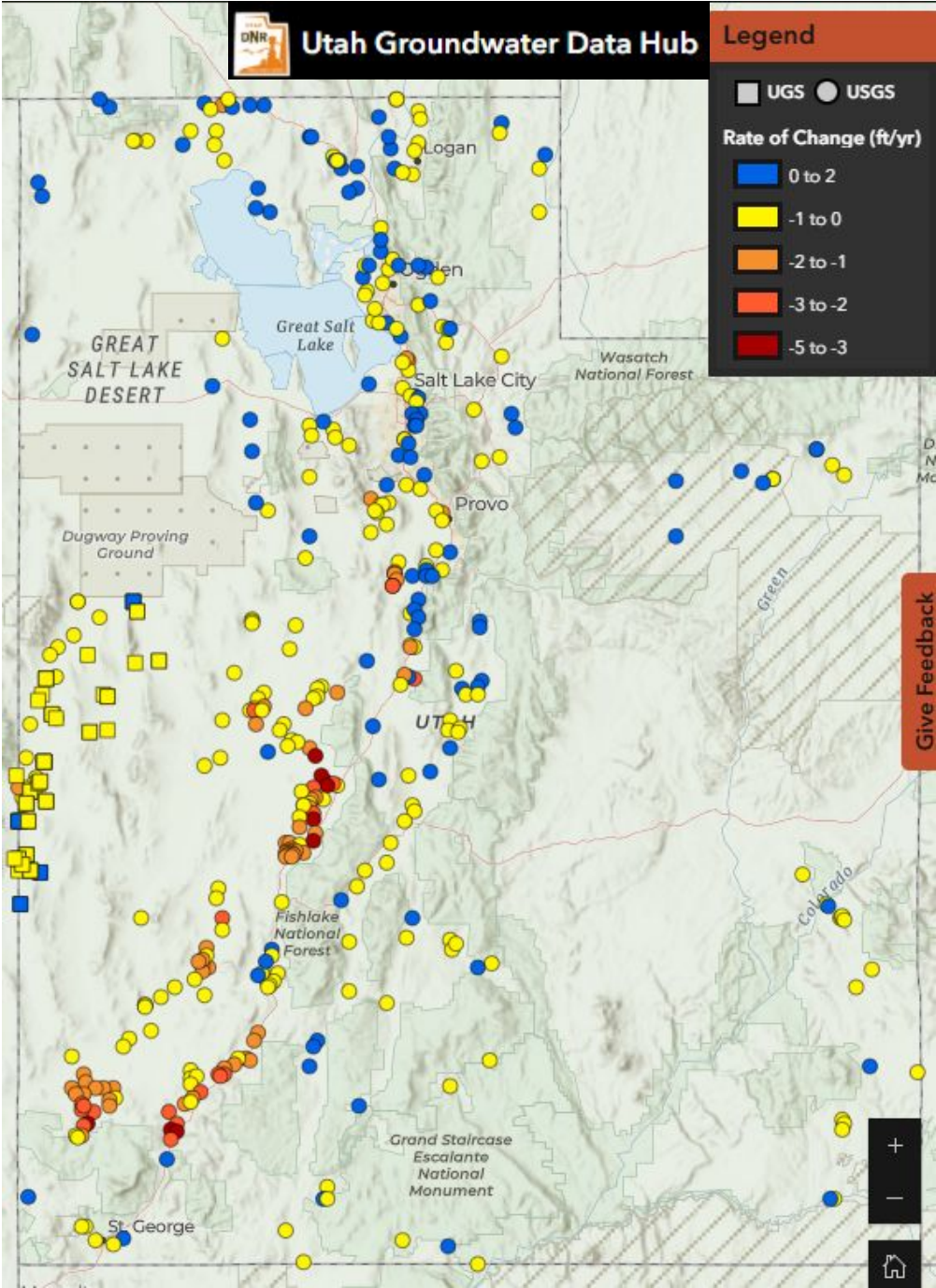
Data Sources: water.utah.gov/reservoirlevels

*State average excludes Lake Powell & Flaming Gorge to better represent the state's water supply.

Total capacity including these is 38%



Groundwater



Streamflow Forecast



Forecast conditions

- No streamflow drought
- Moderate streamflow drought
- Severe streamflow drought
- Extreme streamflow drought

River DroughtCast

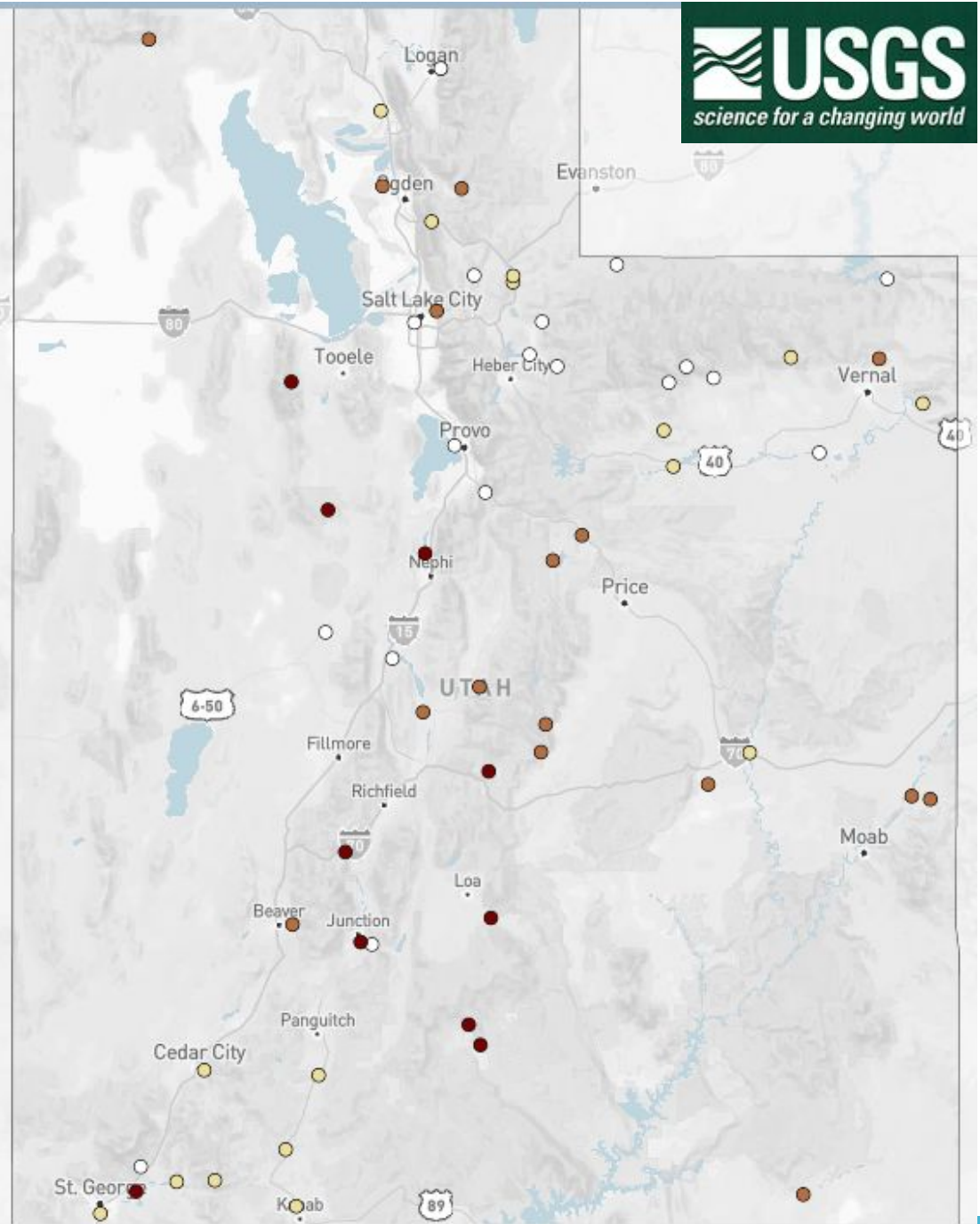
Streamflow drought status and forecasts

Showing **forecast** conditions for

07/01/26
6 weeks out

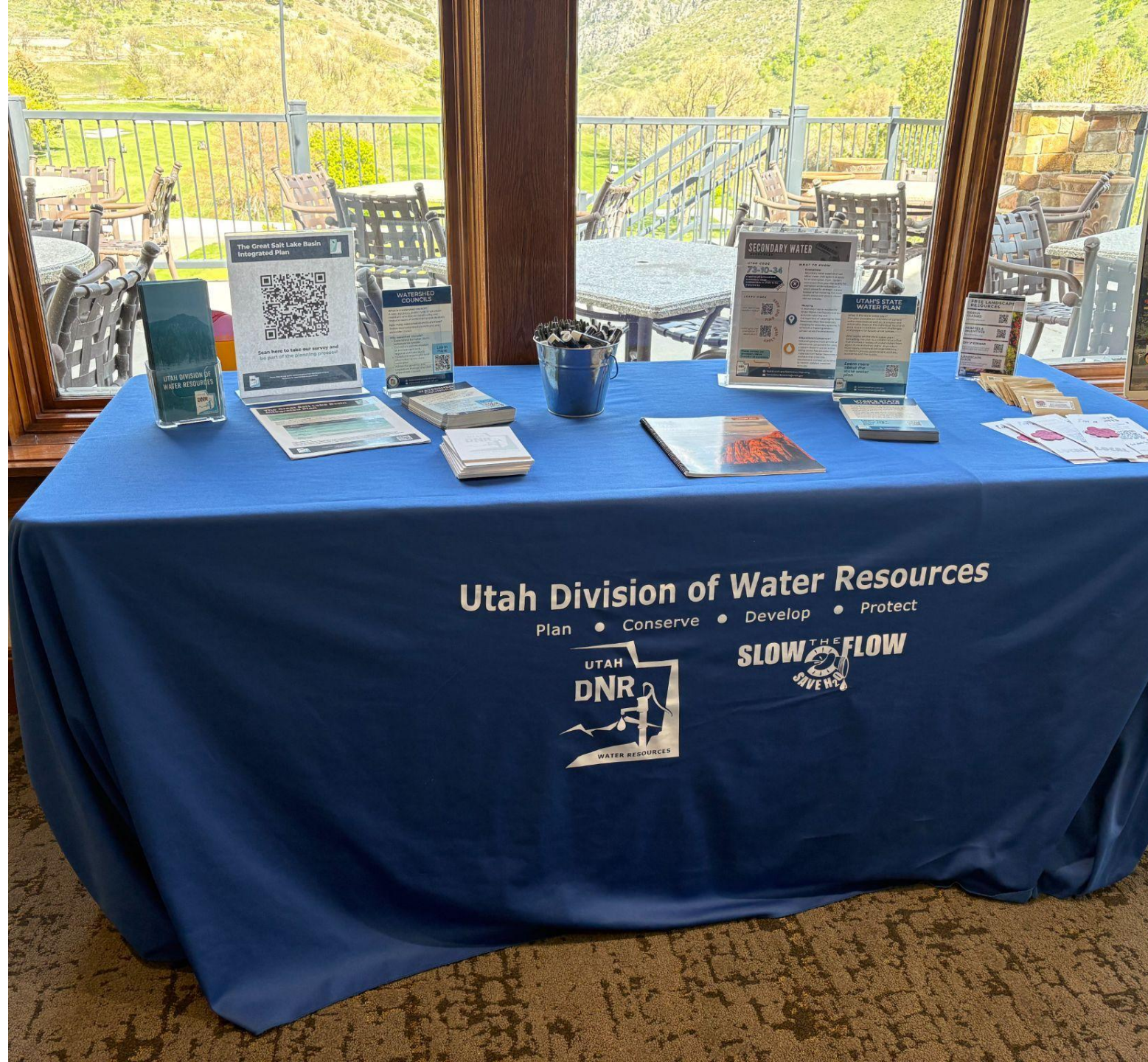
Of **61** sites in **Utah**, the forecast is for

- 69% to be in streamflow drought, with
- 26% in moderate streamflow drought
- 26% in severe streamflow drought
- 16% in extreme streamflow drought



Conservation Outreach

- Three new rural communities reached
- One city adopted water-efficient landscape ordinances
- Booths at 12 community events
- 7 school outreaches
- More to come!





Laura Haskell
Division of Water Resources
Drought Coordinator

lhaskell@utah.gov



Utah Division of Water Resources

water.utah.gov