



State of Utah ORGANIZATION CHARTS

INTRODUCTION

State organization charts show the structure of Utah state government including the constitutionally provided legislative, executive, and judicial branches (see Article V, Sec. 1, Utah State Constitution). Within each department or institution, divisions, offices, boards, and commissions are shown to provide an organizational representation. These charts were prepared by the Office of Legislative Research and General Counsel from input obtained from the agencies shown.

The summary chart shows the broad organization of Utah state government and provides an index to department organization charts on the pages that follow.

As illustrated below, five shapes are used to show the different types of entities. A solid line indicates direct line authority. A dashed line shows that another relationship exists between the connected entities.



For more information, contact the Office of Legislative Research and General Counsel
Room 436 State Capitol, Salt Lake City, Utah 84114-1202, phone (801) 538-1032
<http://le.utah.gov>

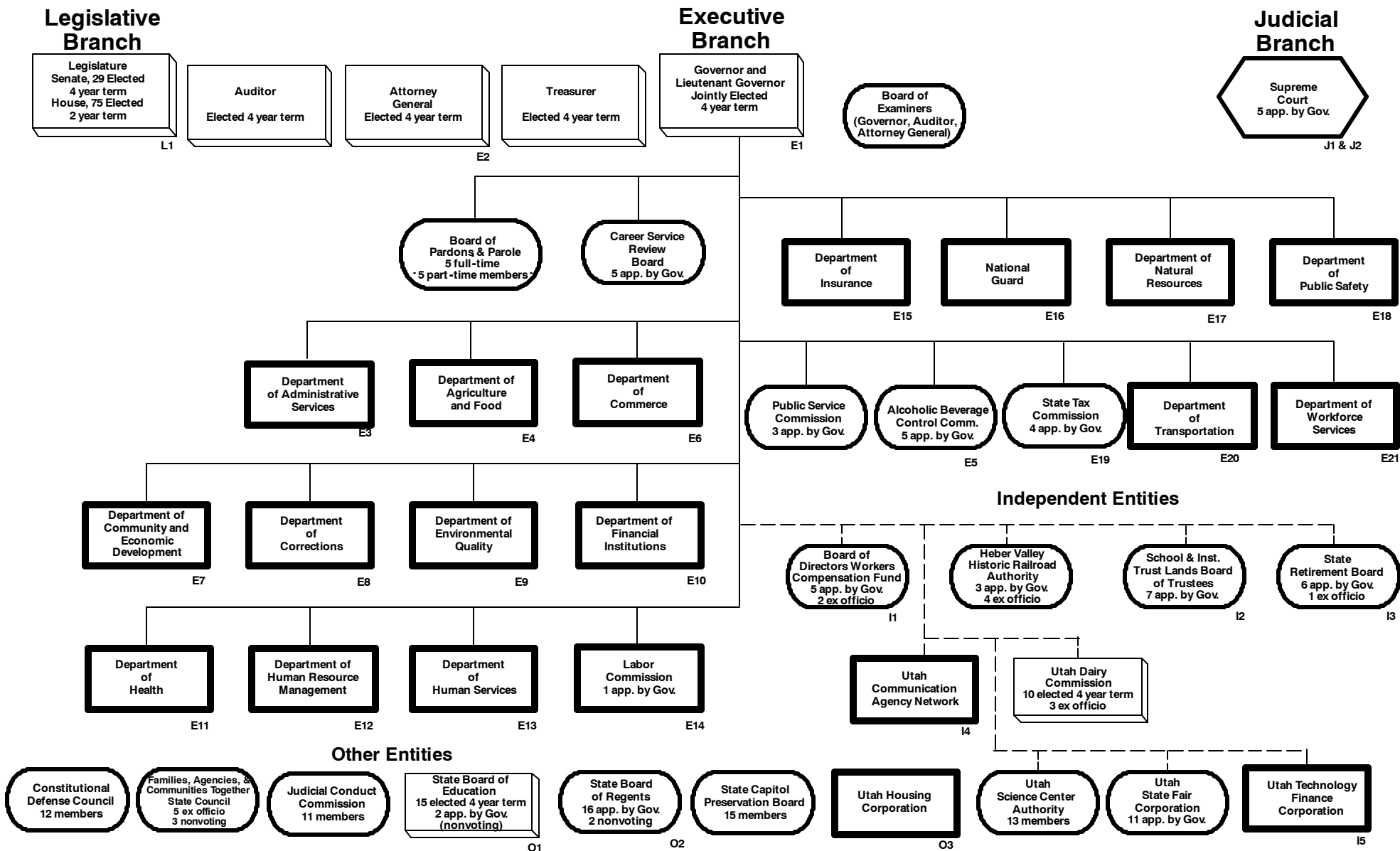
TABLE OF CONTENTS

Utah State Government	Summary Chart
Legislative Branch	
Utah State Legislature	L1
Judicial Branch	
Supreme Court	J1
Judicial Council	J2
Executive Branch	
Governor	E1
Attorney General	E2
Department of Administrative Services	E3
Department of Agriculture and Food	E4
Department of Alcoholic Beverage Control	E5
Department of Commerce	E6
Department of Community and Economic Development ..	E7
Department of Corrections	E8
Department of Environmental Quality	E9
Department of Financial Institutions	E10
Department of Health	E11
Department of Human Resource Management	E12
Department of Human Services	E13
Department of Insurance	E14
Labor Commission	E15
National Guard	E16
Department of Natural Resources	E17
Department of Public Safety	E18
State Tax Commission	E19
Department of Transportation	E20
Department of Workforce Services	E21
Other Entities	
State Board of Education	O1
State Board of Regents	O2
Utah Housing Corporation	O3
Independent Entities	
Board of Directors Workers Compensation Fund	I1
School and Institutional Trust Lands Board of Trustees ...	I2
State Retirement Board	I3
Utah Communications Agency Network	I4
Utah Technology Finance Corporation	I5

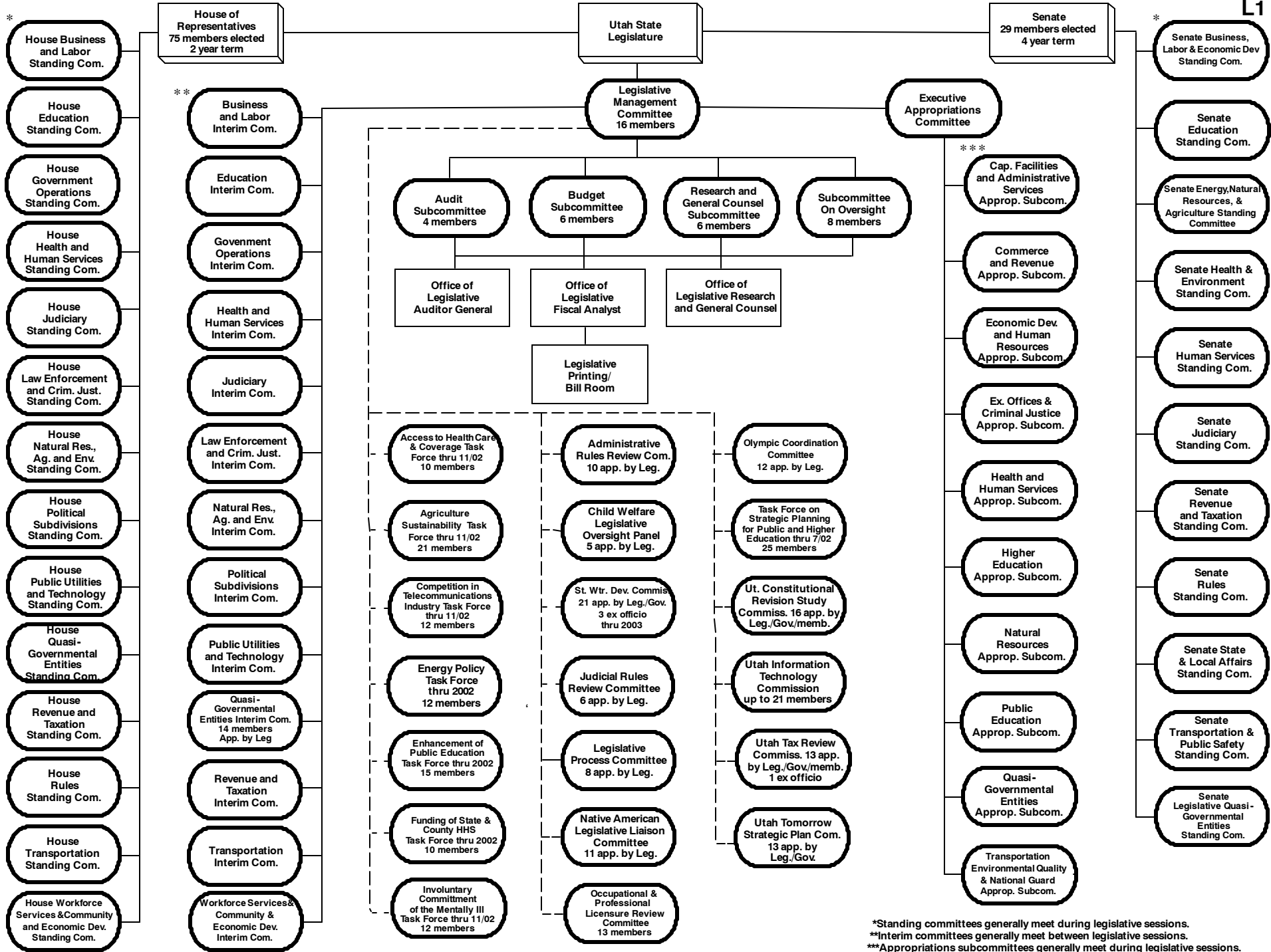
UTAH STATE GOVERNMENT

Prepared by
OFFICE OF LEGISLATIVE RESEARCH AND GENERAL COUNSEL
July 2002

Population 2,295,971 (estimated July 2001); Counties 29; Municipalities 237; Independent Special Districts approximately 325; School Districts 40



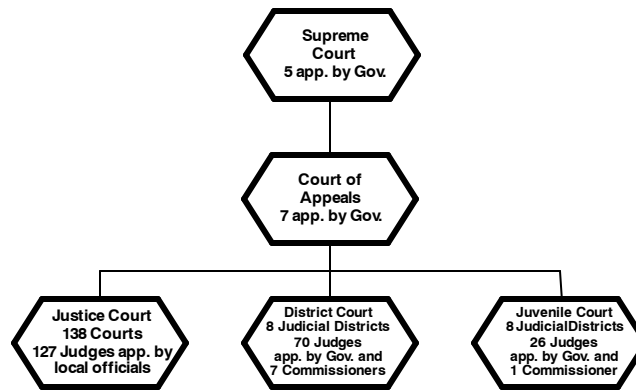
Legislative Branch



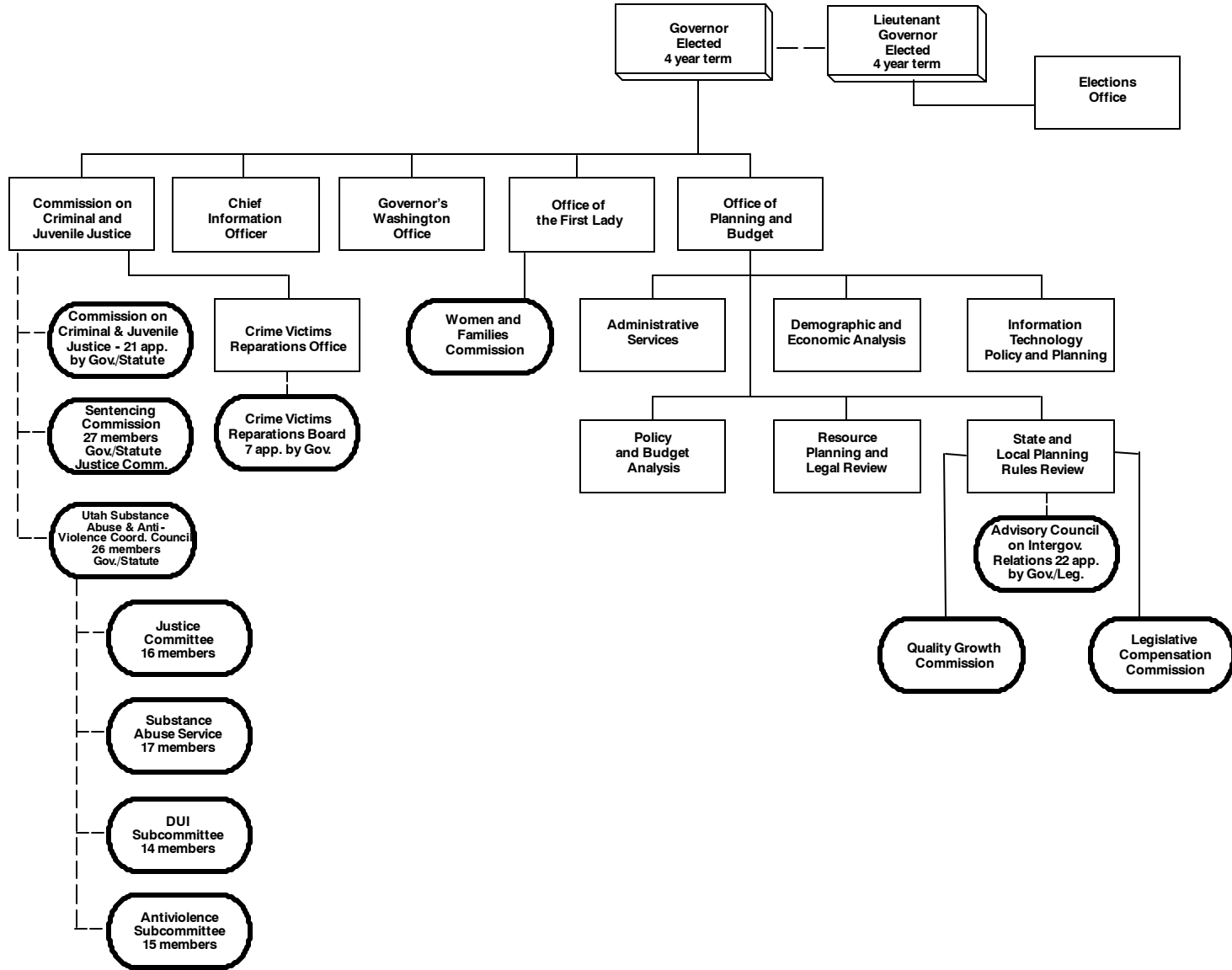
*Standing committees generally meet during legislative sessions.
 **Interim committees generally meet between legislative sessions.
 ***Appropriations subcommittees generally meet during legislative sessions.

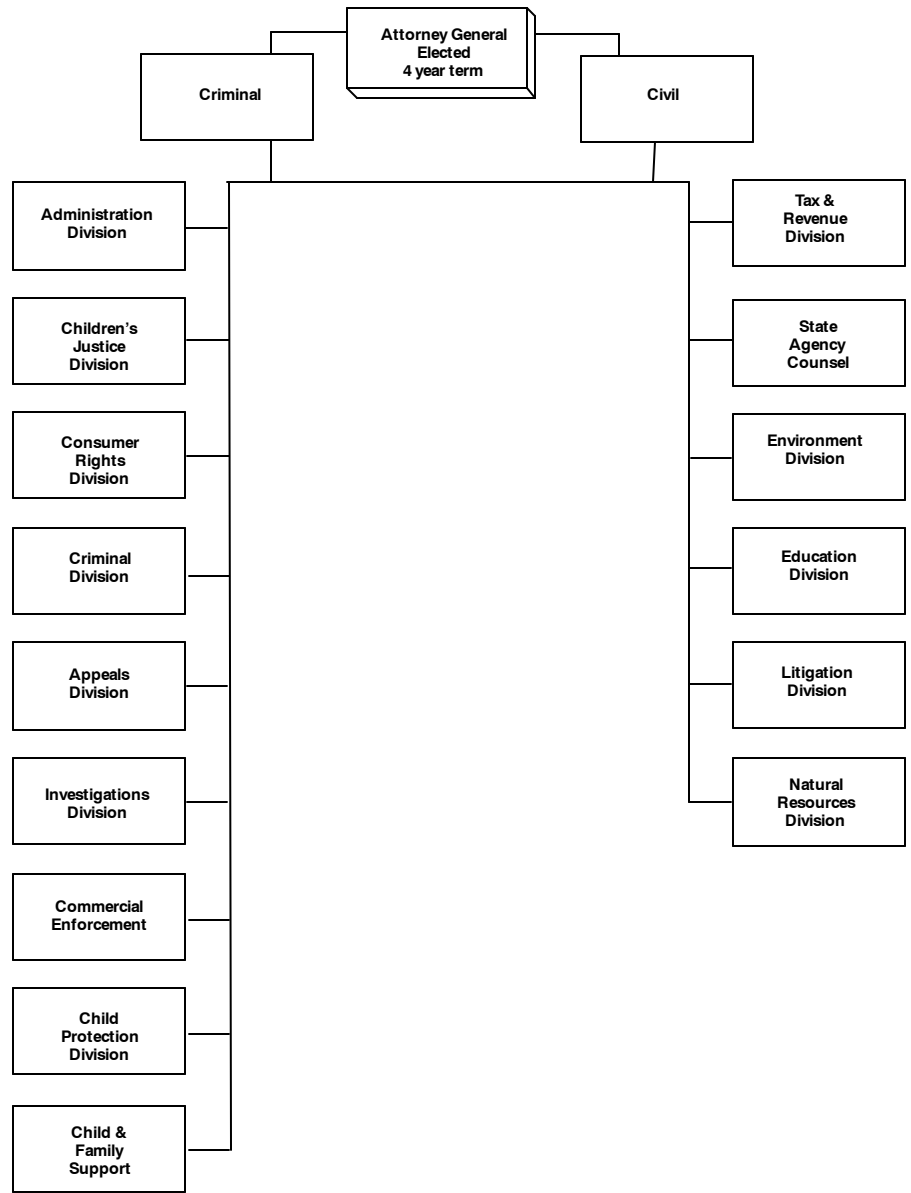
Judicial Branch

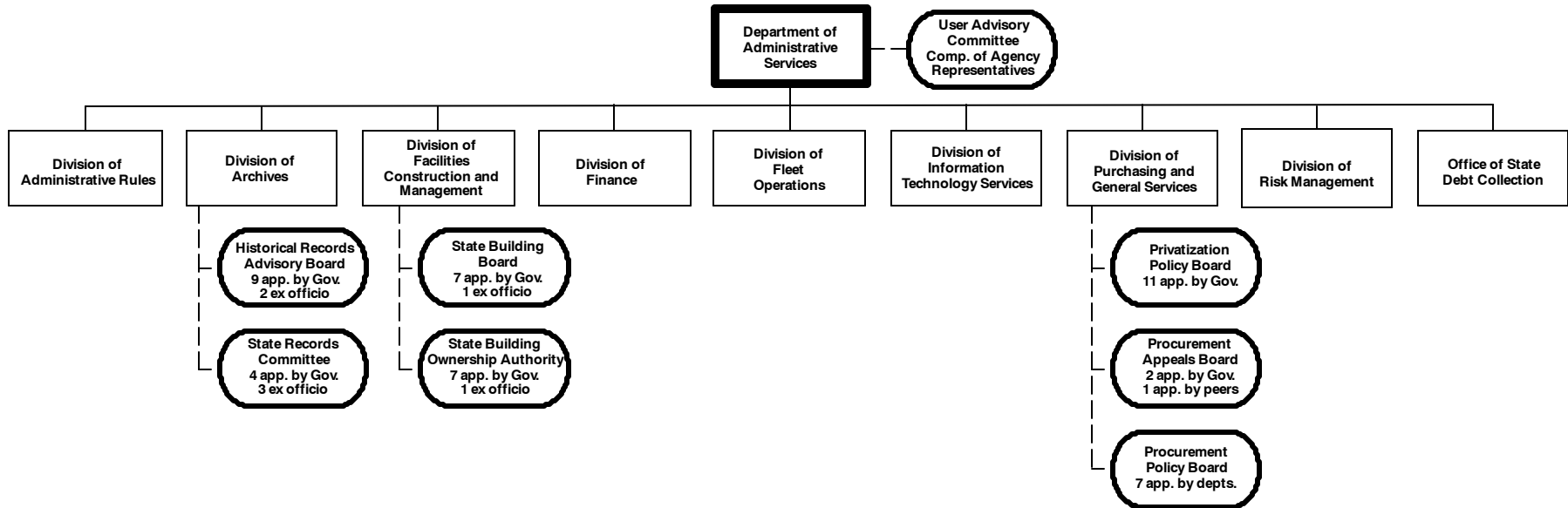
Jurisdiction and Appeals

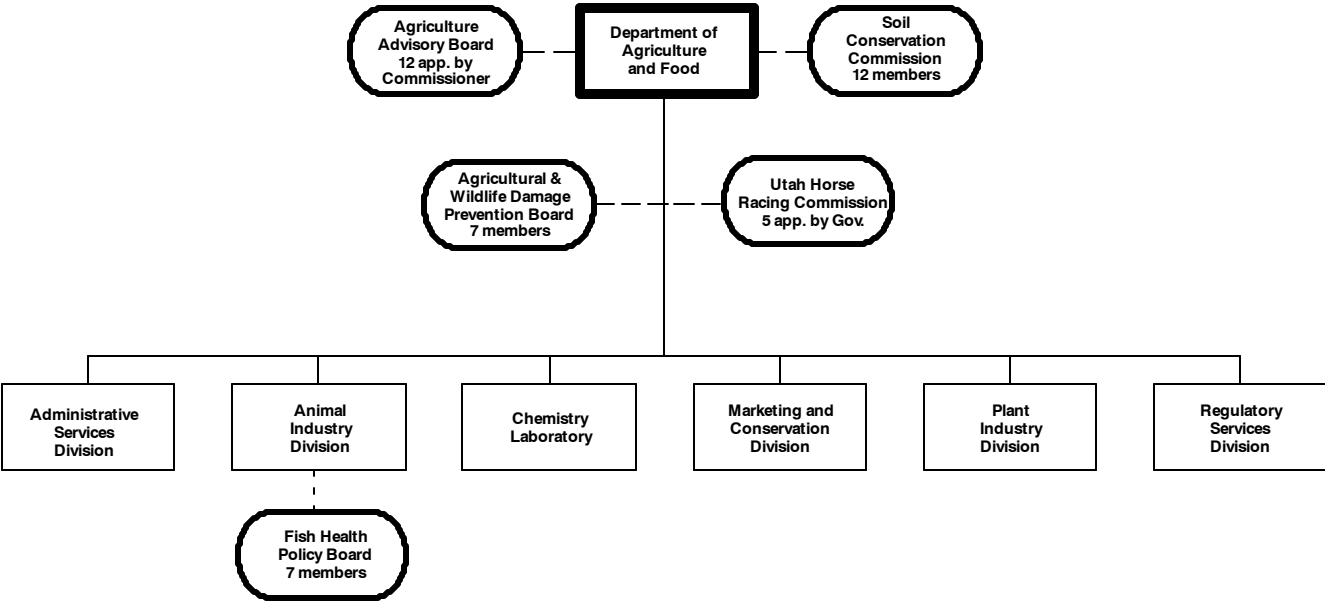


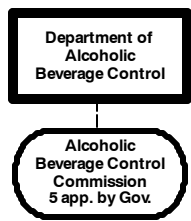
Executive Branch

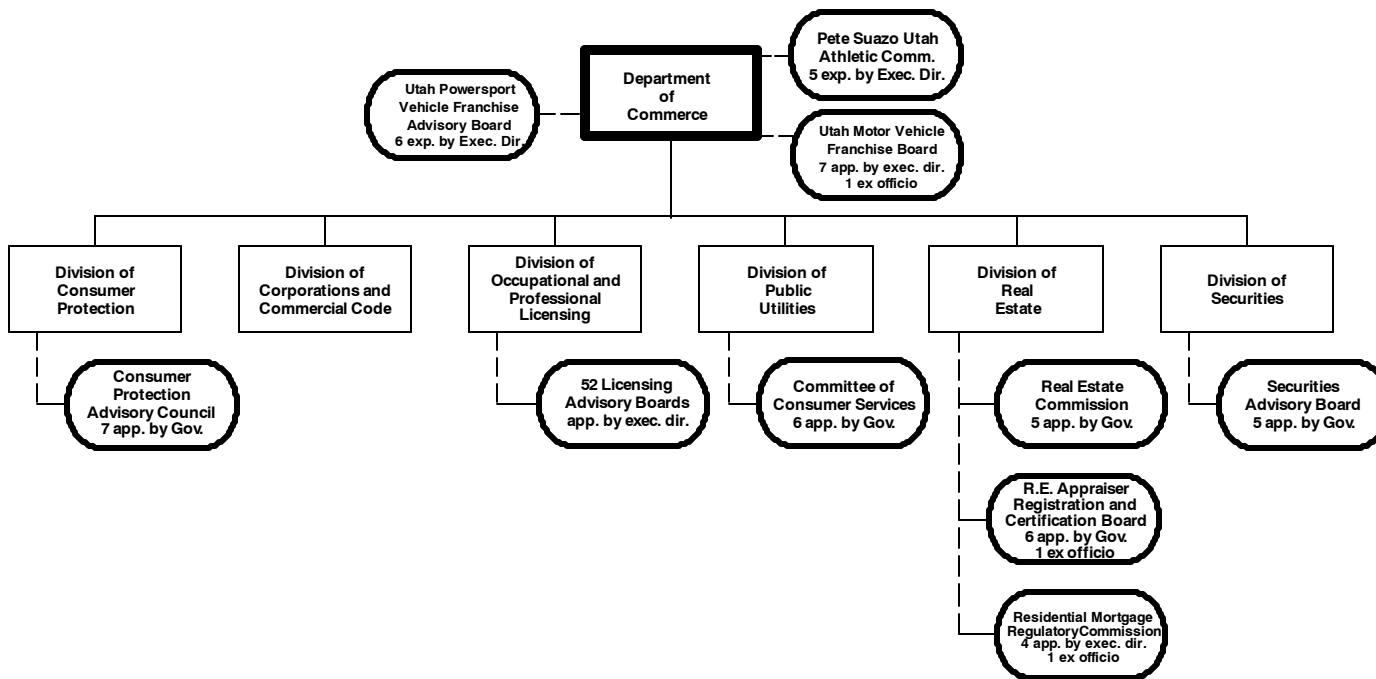


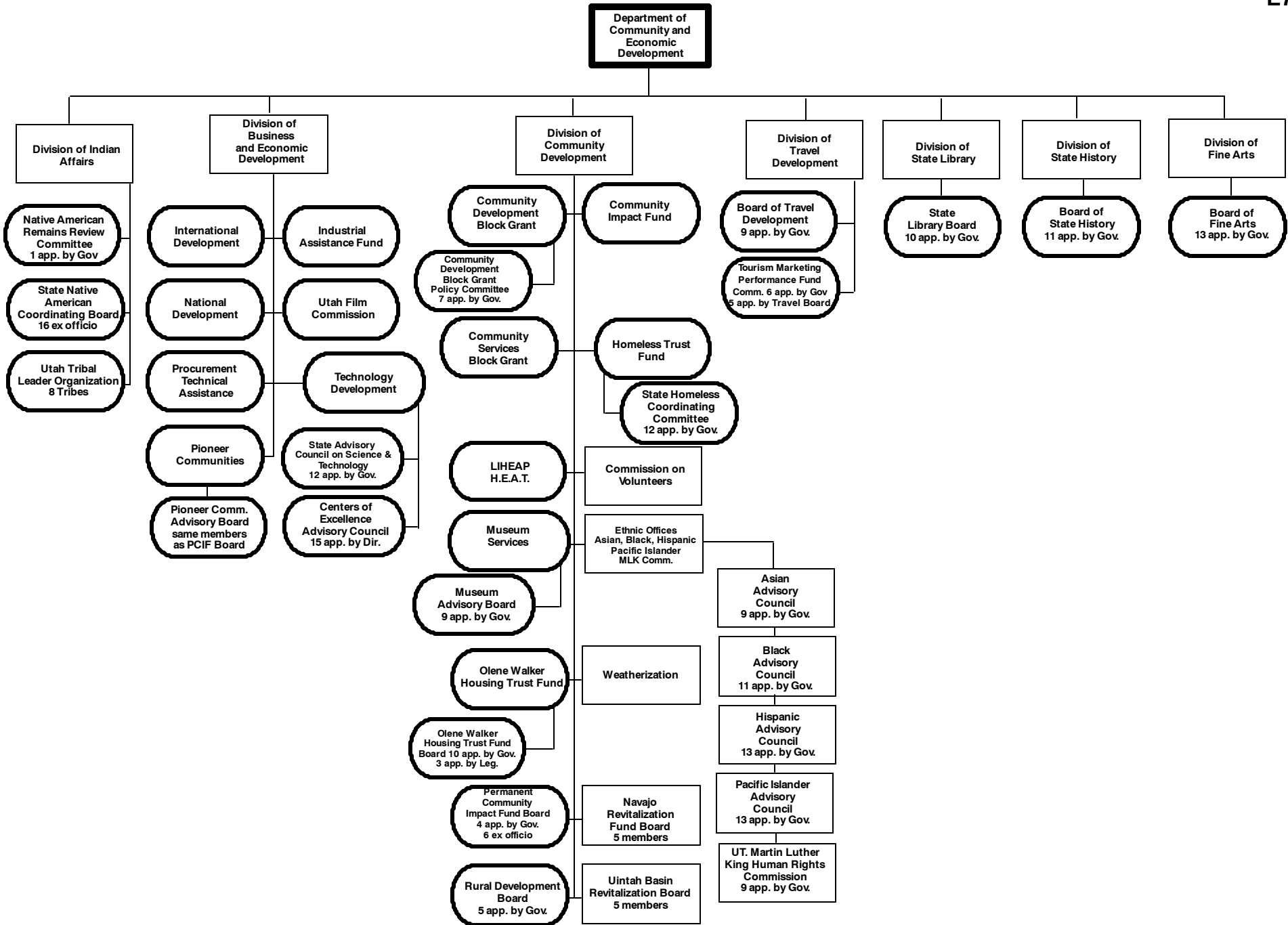


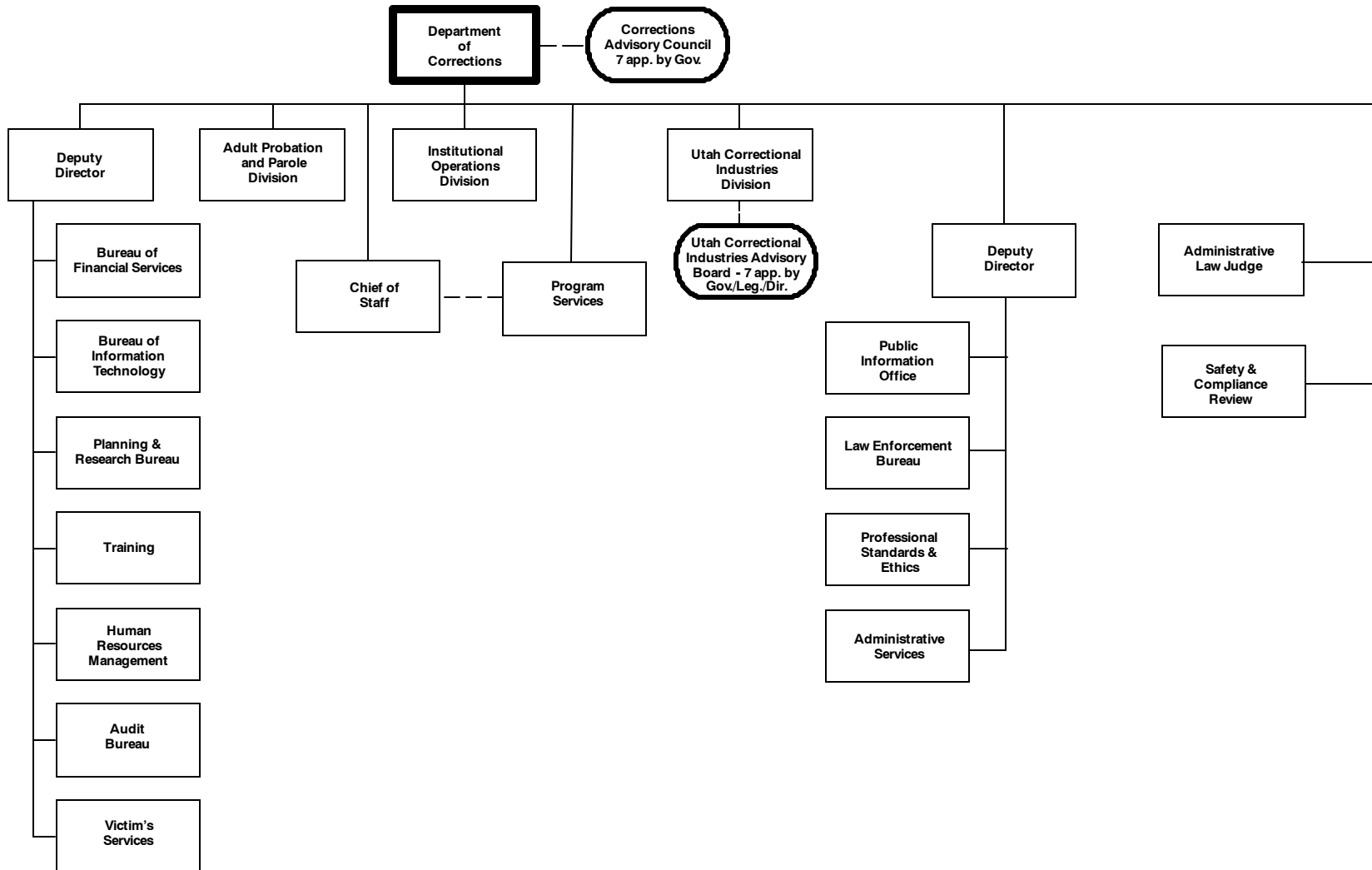


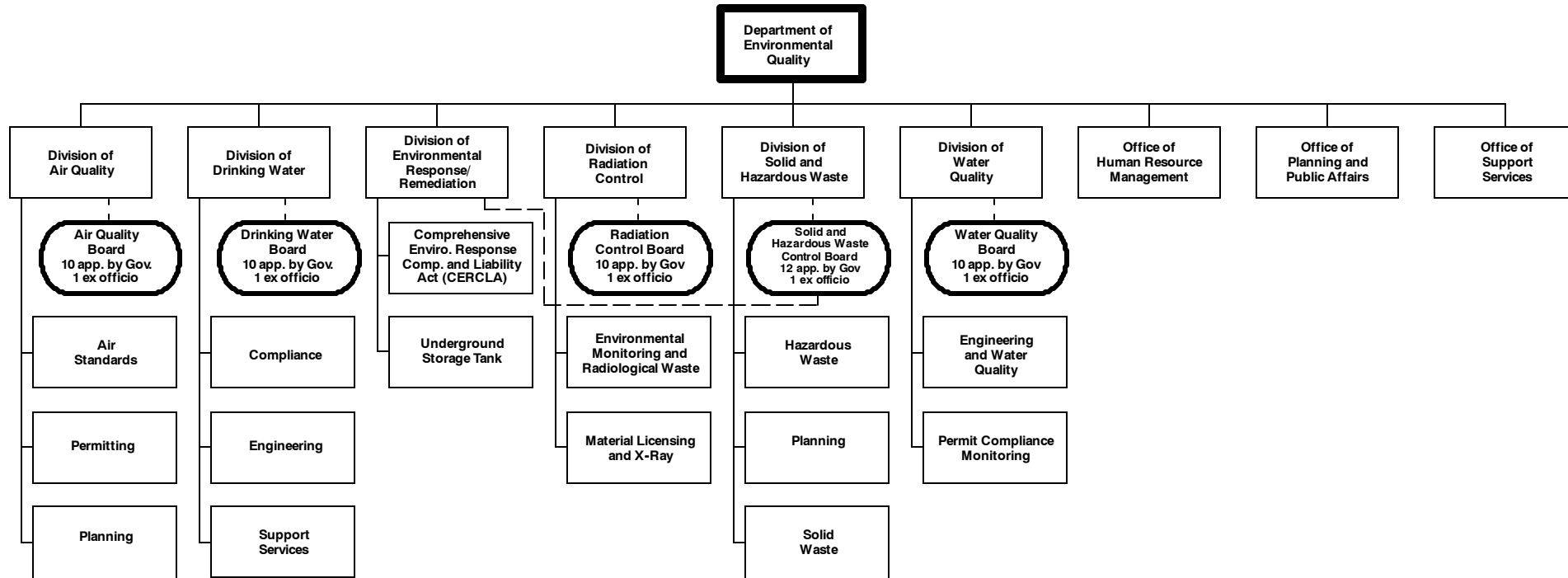


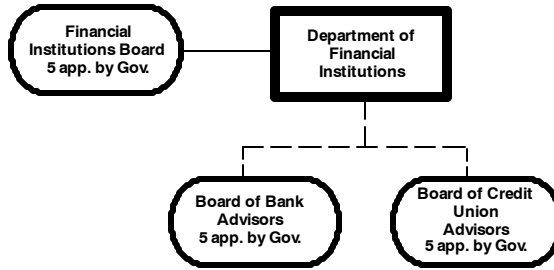


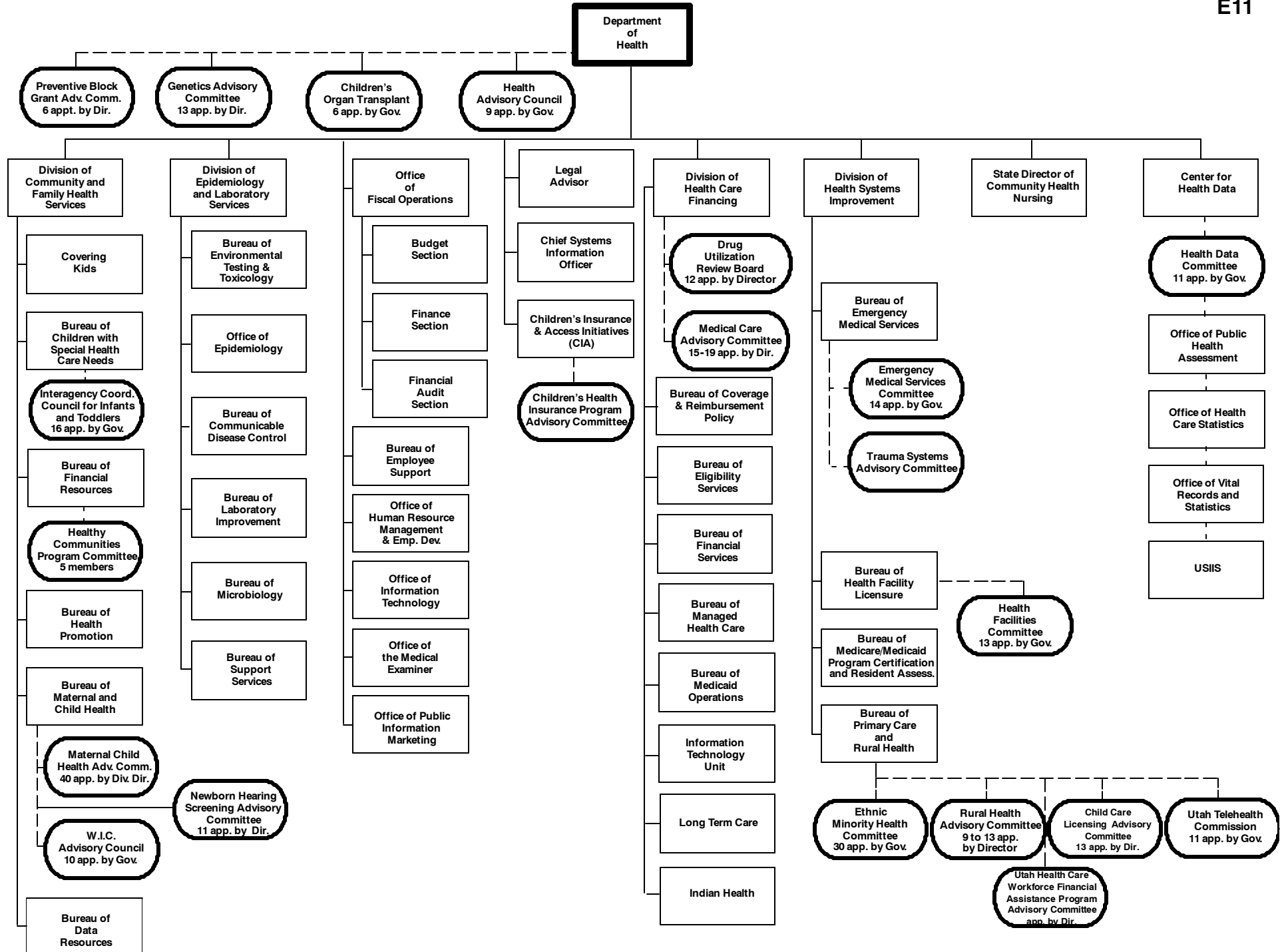


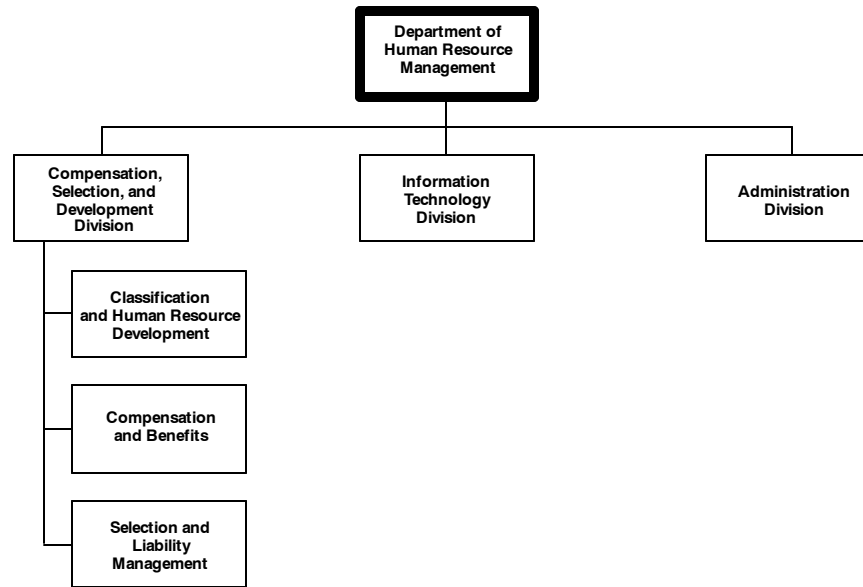


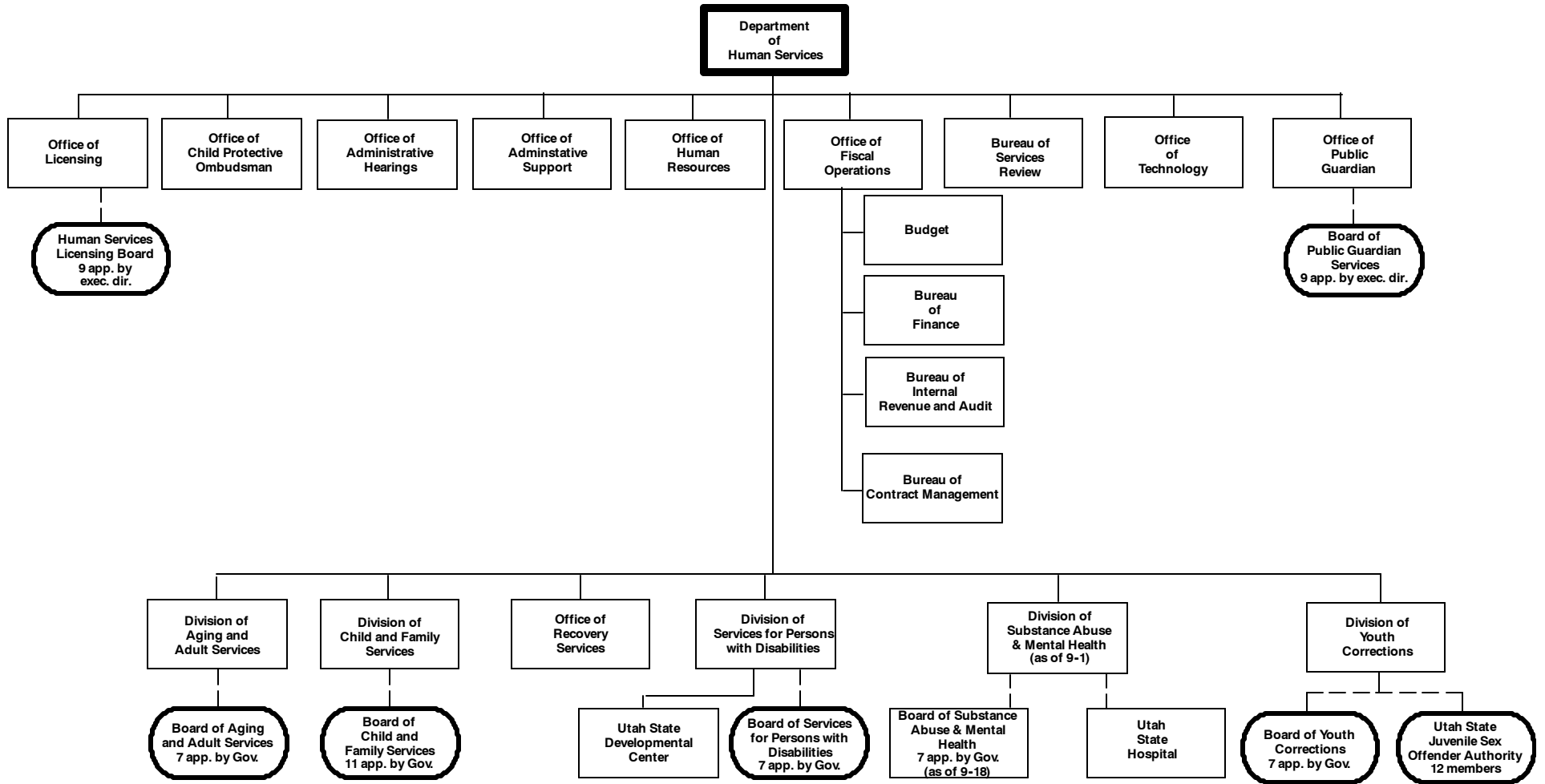


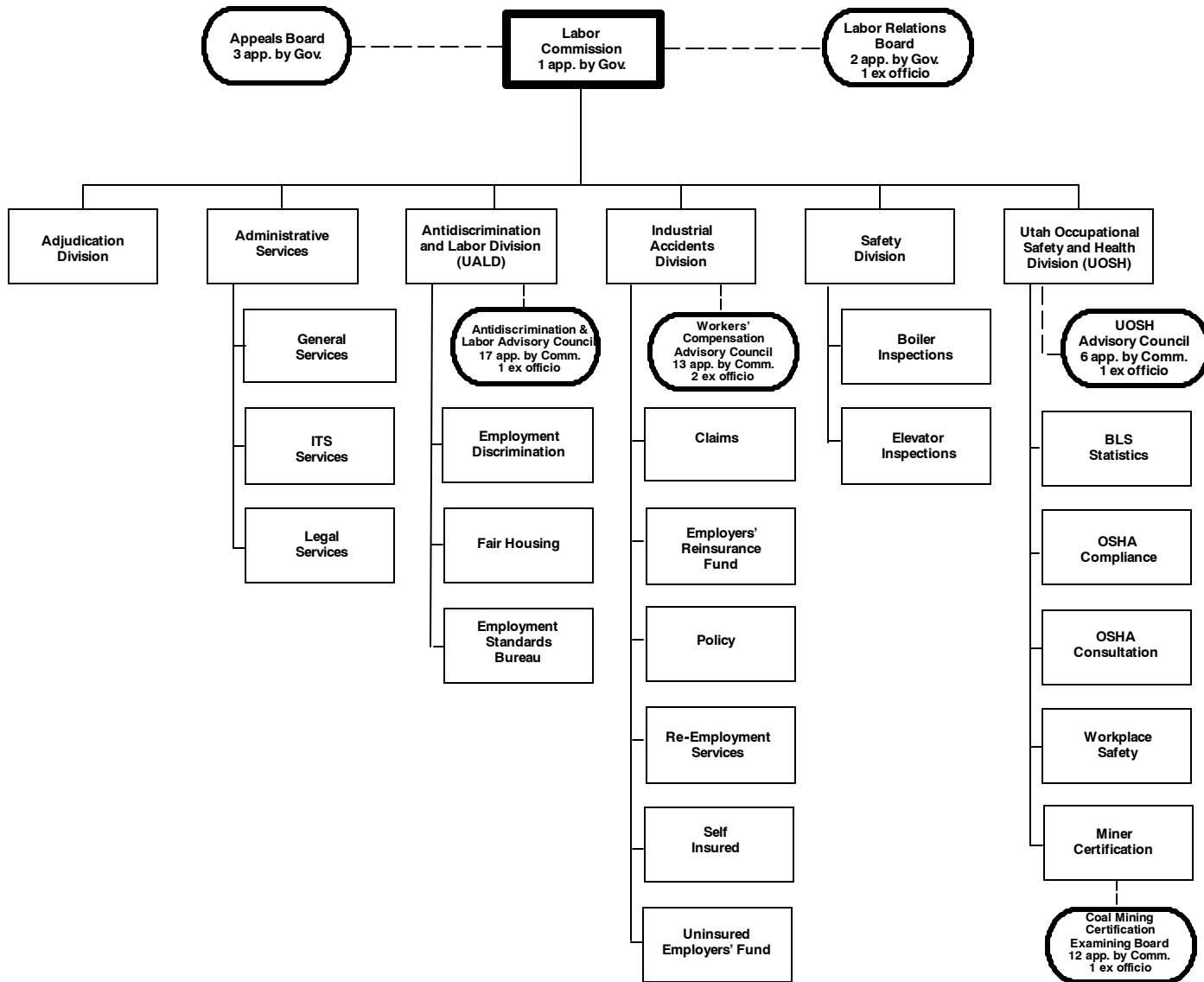


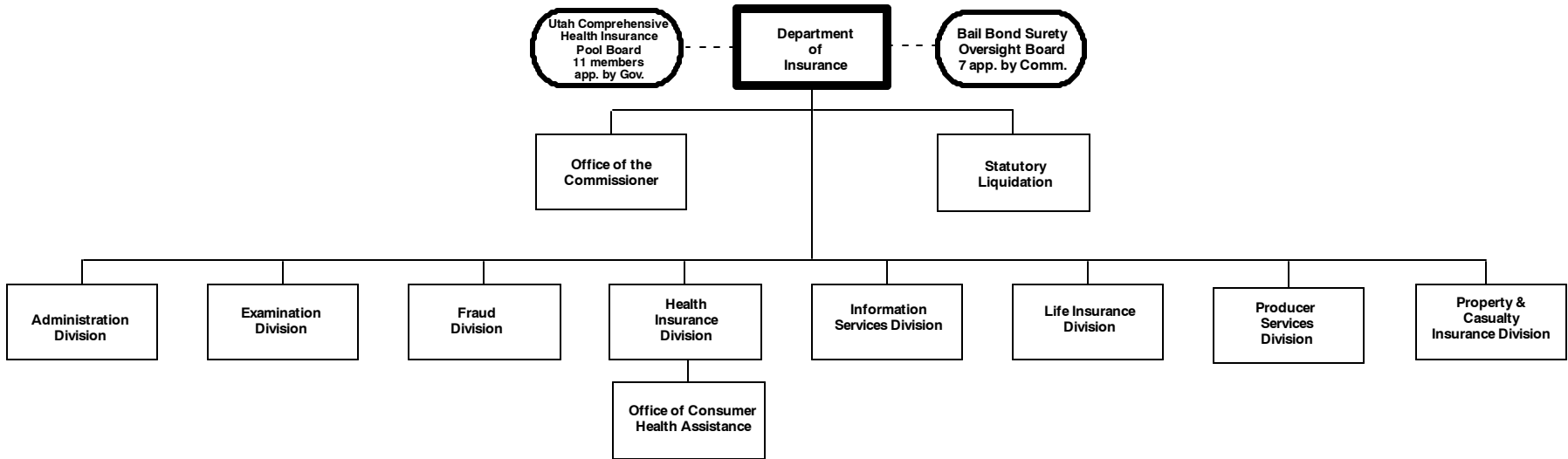


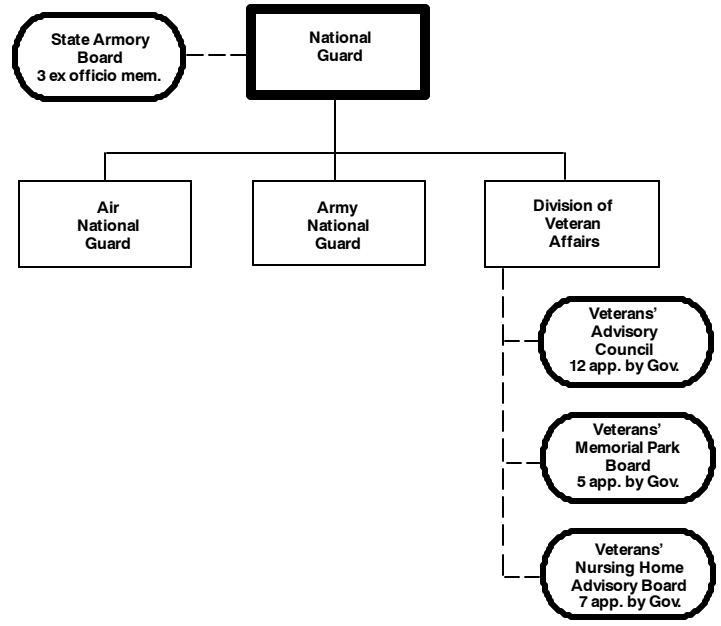


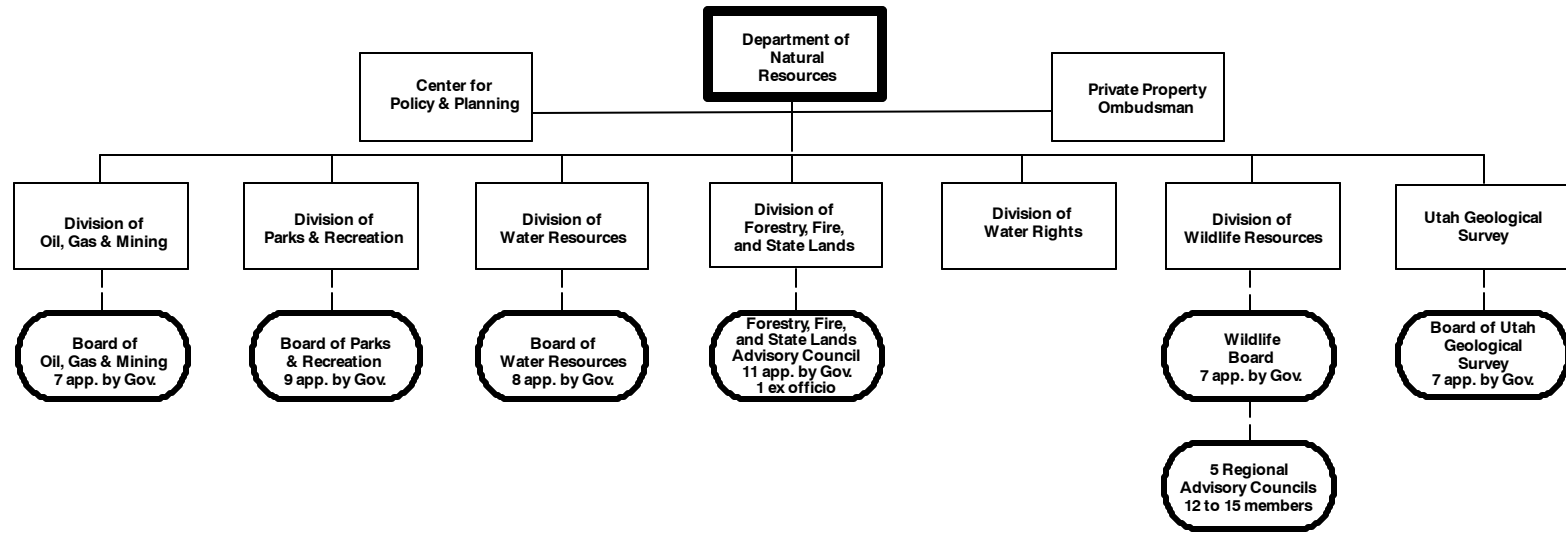


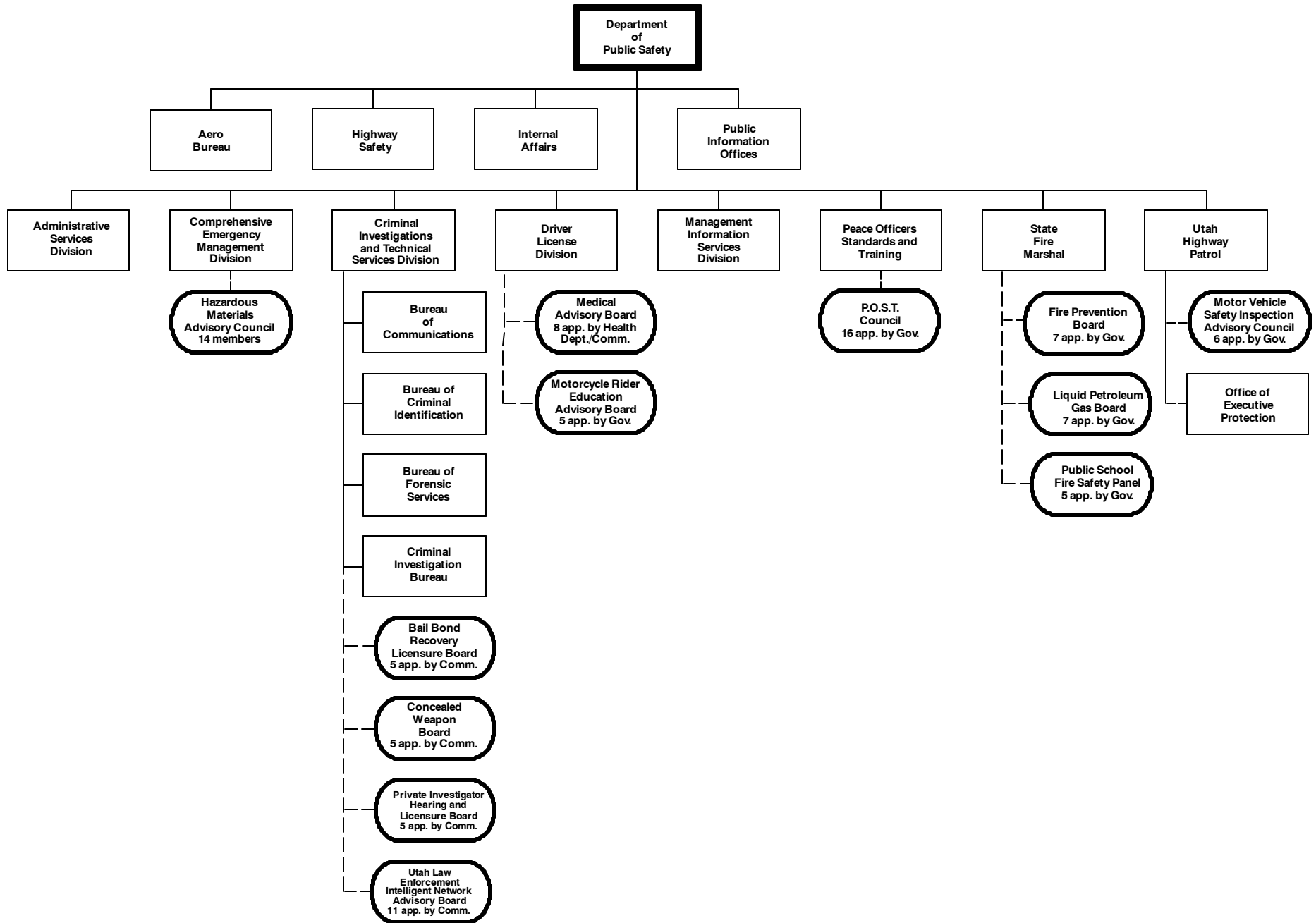


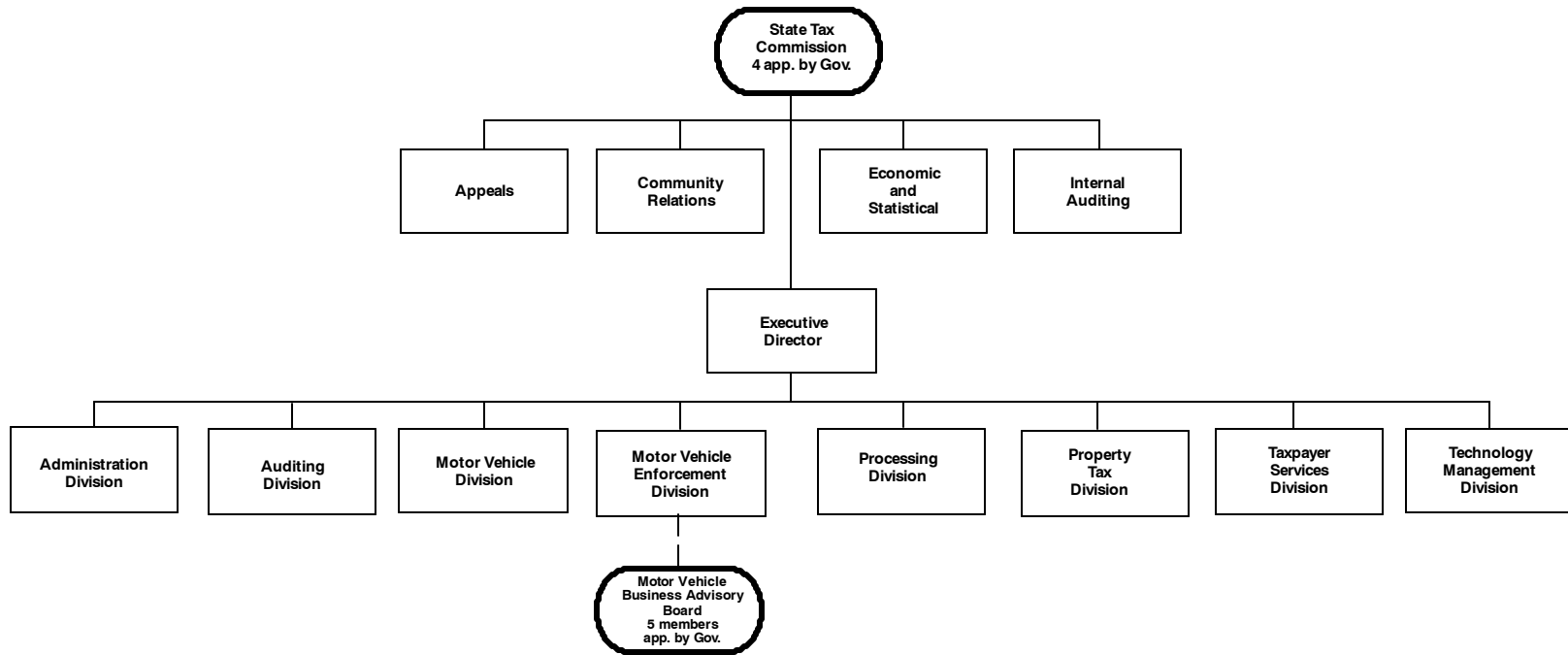


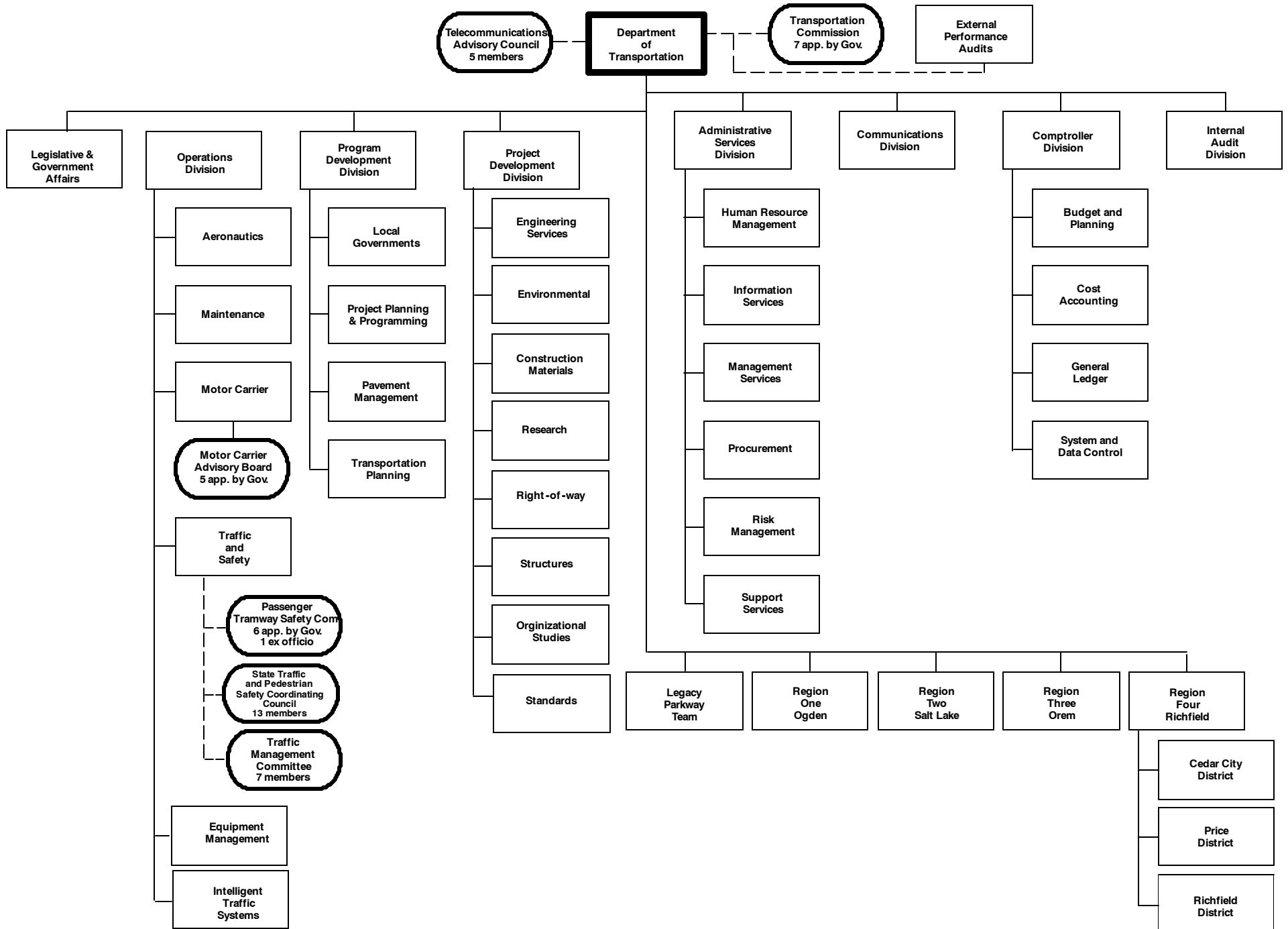


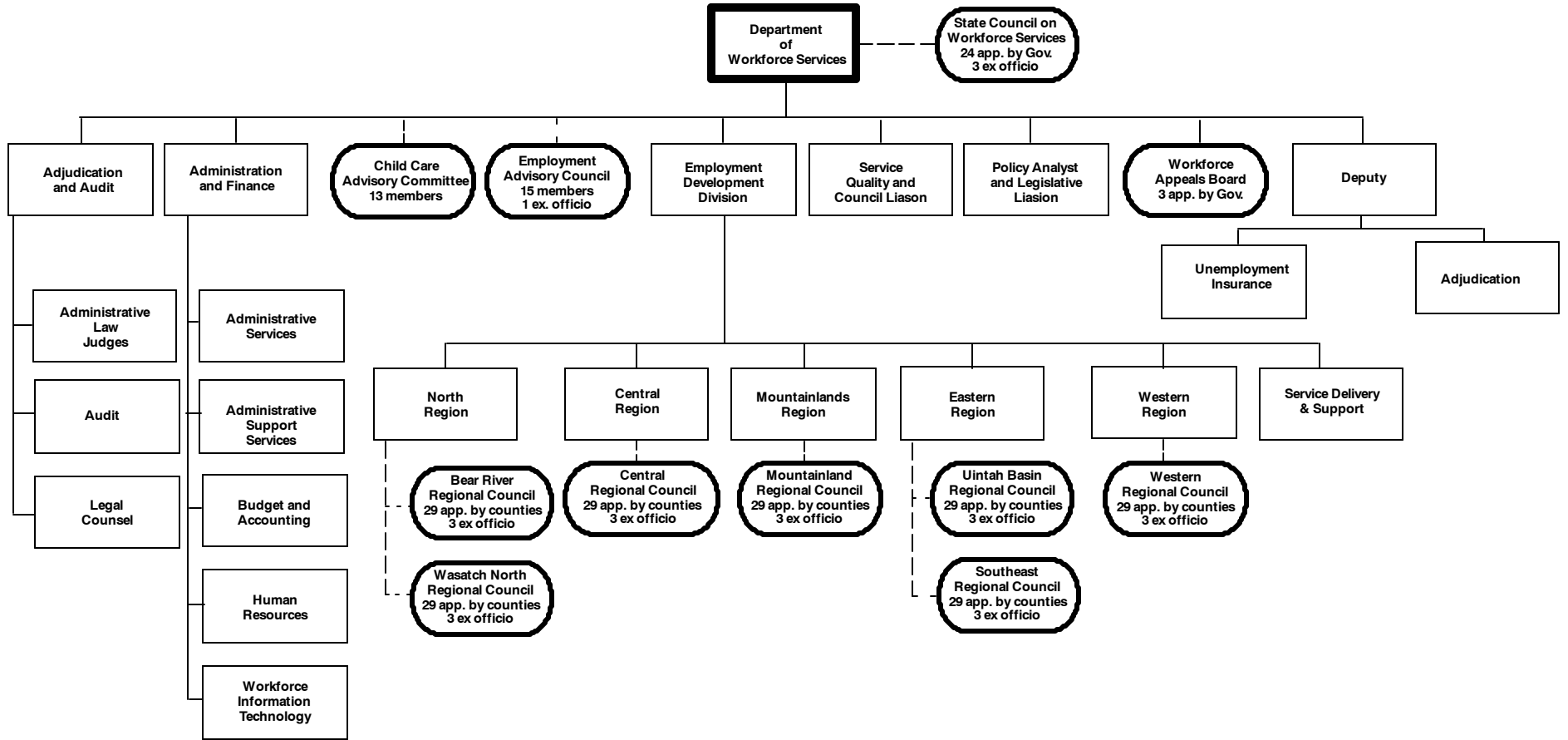




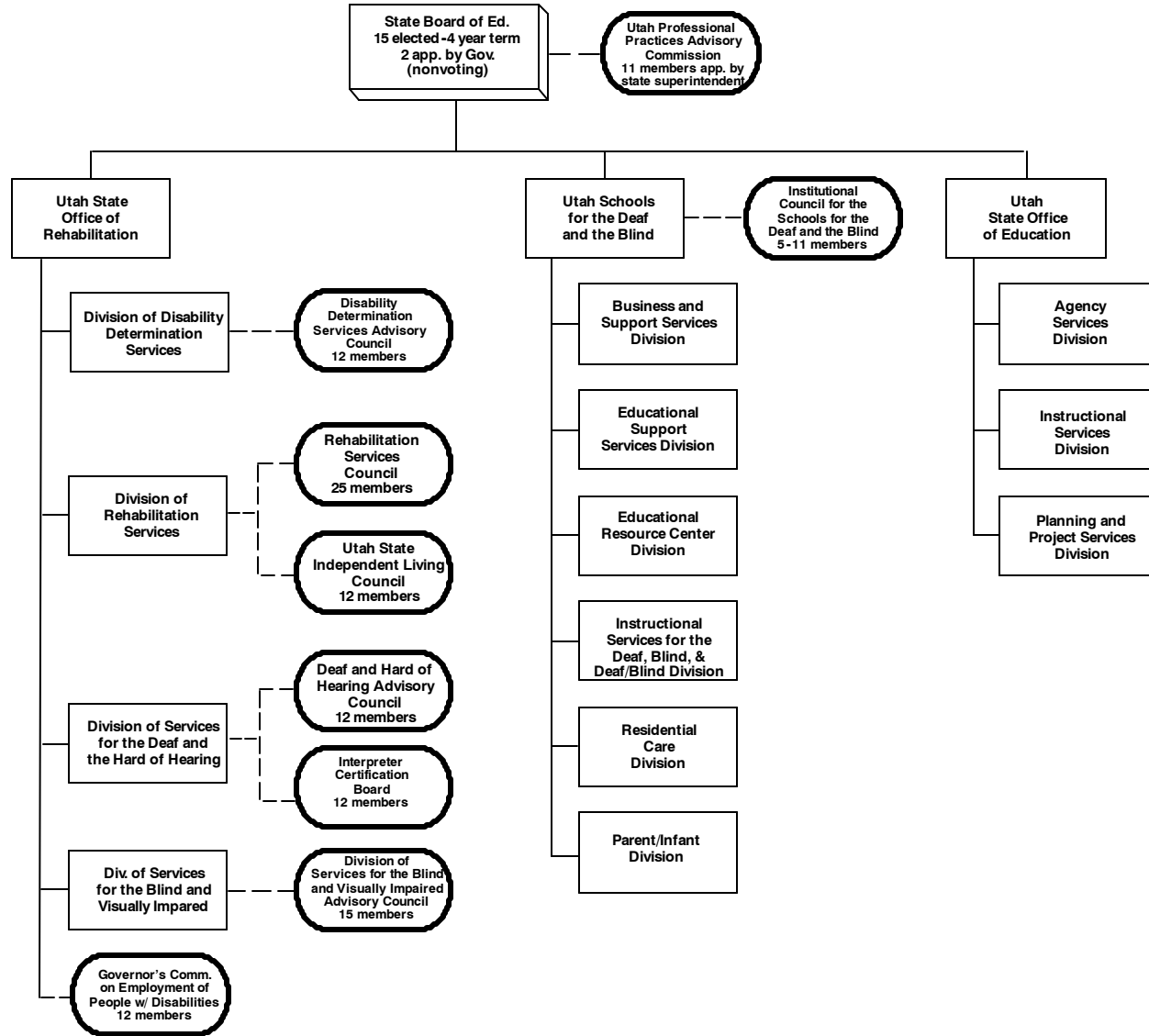


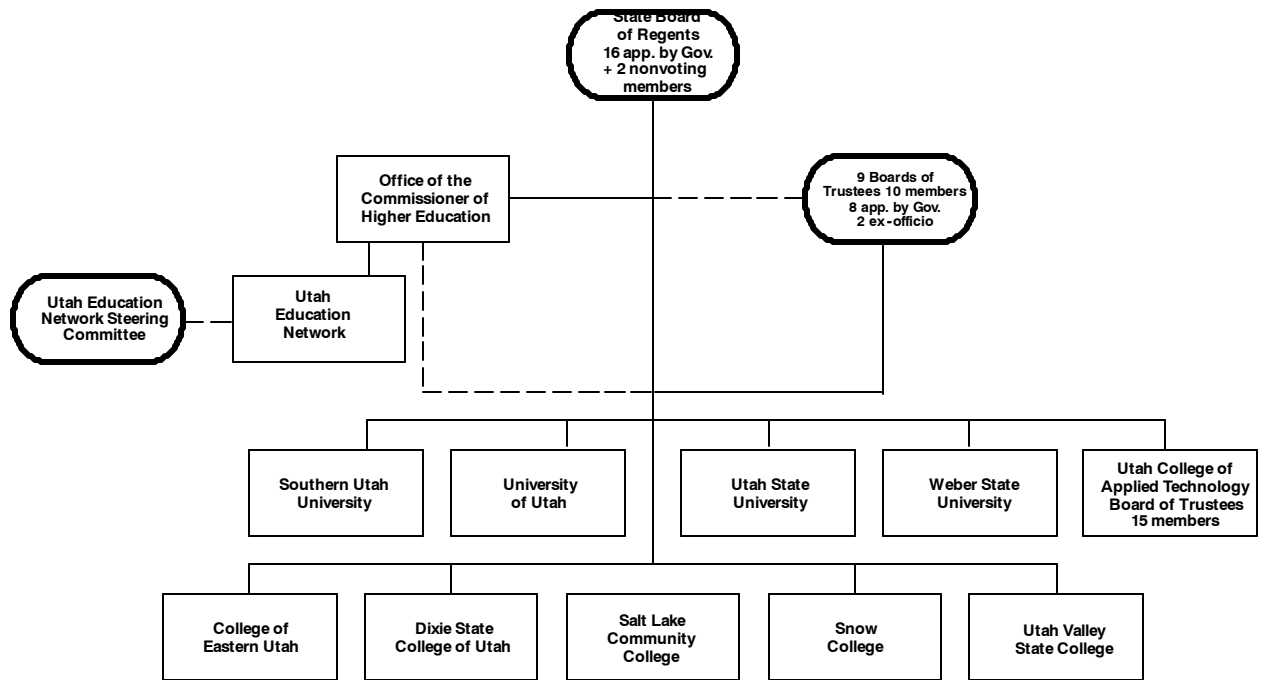






Other Entities

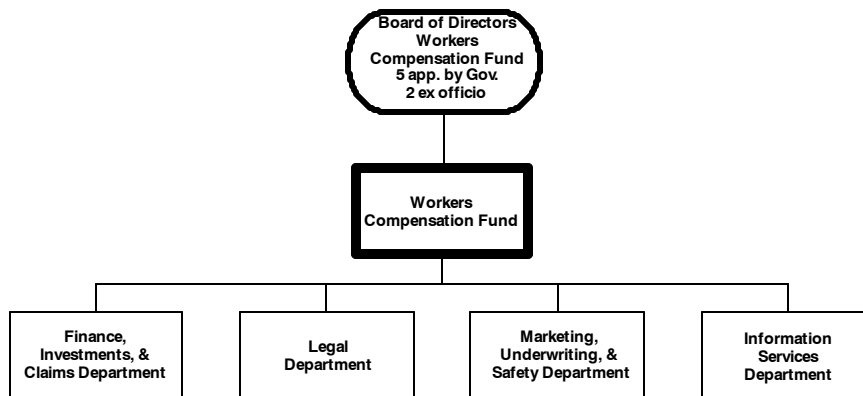


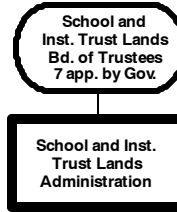


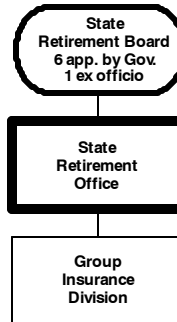
Utah Housing Corporation

Ut. Housing Fin. Corporation Trustees
6 app. by Gov.
3 ex officio

Independent Entities

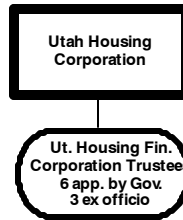






Utah
Communications
Agency Network

Ut. Comm.
Agency Network Bd.
10 members elected
from local gov't
and 5 state reps.



Utah Technology
Finance Corporation

Ut. Technology Fin.
Corp. Bd. of Trustees
5-9 members
app. by Gov.
2 ex officio